

YUCATÁN

---RED FEDERAL LIBRE---

1 Campeche - Mérida	MEX-180
2 Campeche - Umán	MEX-261
3 Cansahcab - Tizimín	MEX-176
4 Conkal - Puerto Chicxulub	MEX-176
5 Dzitbalché - Ent. San Bernardo	MEX-180
6 Ent. Poxilá - Mérida	MEX-180
7 Hunucmá - Sisal	MEX-281
8 Libramiento Conkal - Mococho - Baca	MEX-176
9 Libramiento de Conkal	MEX
10 Libramiento de Progreso	MEX-261
11 Libramiento de Tahmek - Hoctun - Xocchel	MEX-180
12 Mérida - Celestún	MEX-281
13 Mérida - Dzilam de Bravo	MEX-176
14 Mérida - Progreso	MEX-261
15 Mérida - Puerto Juárez	MEX-180
16 Mérida - Tekanto	MEX-180
17 Mérida - Tetiz	MEX-281
18 Muna - Felipe Carrillo Puerto	MEX-184
19 Ramal a Panabá	MEX-295
20 Teya -Peto	MEX-184
21 Tzucacab - Santa Rosa	MEX
22 Valladolid - Felipe Carrillo Puerto	MEX-295
23 Valladolid - Río Lagartos	MEX-295

---RED FEDERAL DE CUOTA---

24 Mérida - Cancún (Cuota)	MEX-180D
----------------------------	----------

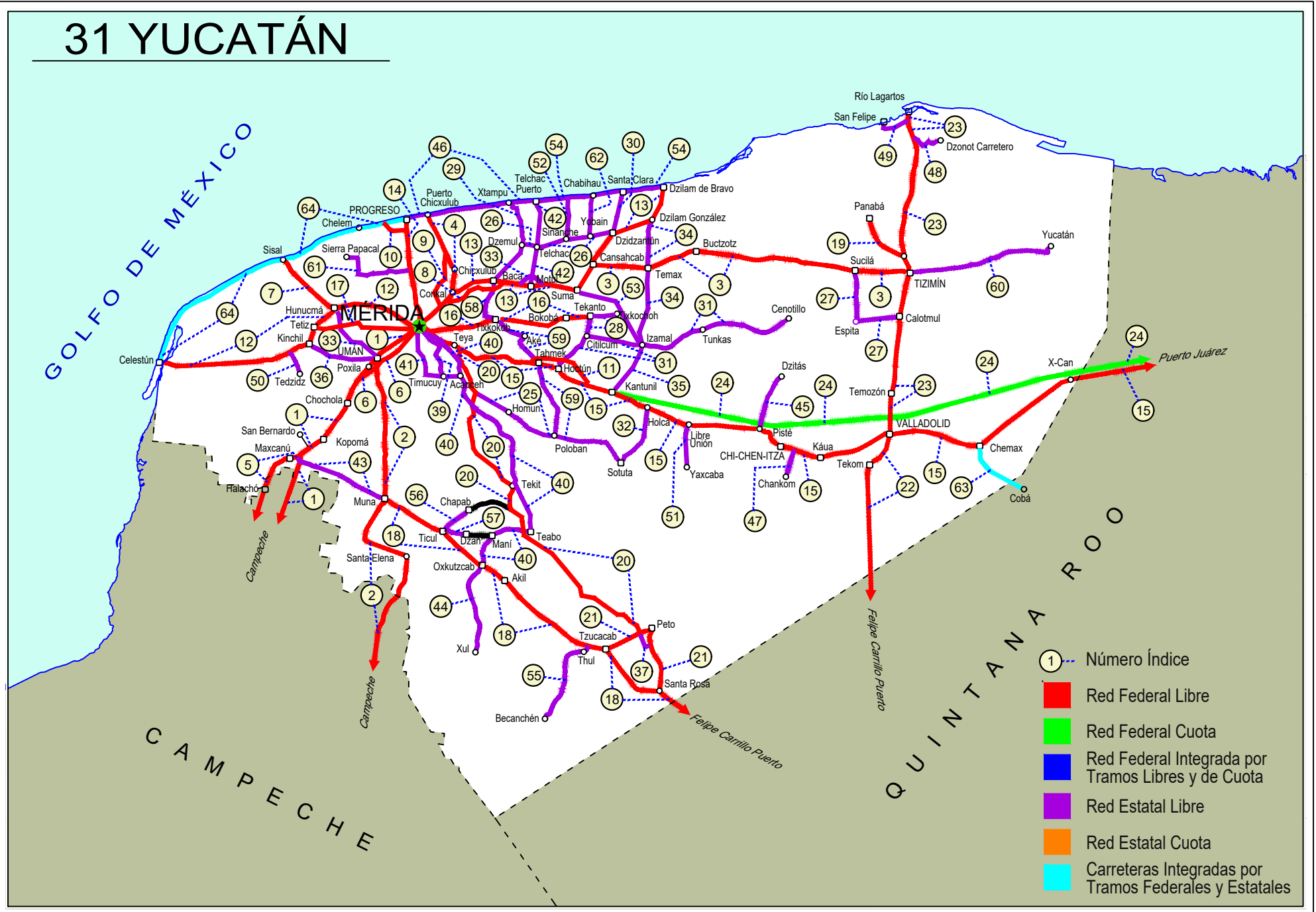
---RED ESTATAL LIBRE---

25 Acanceh - Estación Polabán	YUC
26 Baca - Dzidzantún	YUC
27 Calotmul - Sucilá	YUC
28 Citilcum - Tixkochoh	YUC
29 Dzemul - Xtampú	YUC
30 Dzidzantún - Santa Clara	YUC
31 Hoctún - Cenotillo	YUC-011
32 Holcá - Sotuta	YUC
33 Hunucmá - Umán	YUC
34 Izamal - Dzilam González	YUC
35 Kantunil - Izamal	YUC
36 Kinchil - Umán	YUC
37 Libramiento de Peto	YUC-018
38 Libramiento Norte de Motul	YUC
39 Mérida - Acanceh	YUC
40 Mérida - Oxkutzcab	YUC-018
41 Mérida - Timucuy	YUC
42 Motul - Puerto Telchac	YUC-172
43 Muna - Maxcanú	YUC
44 Oxkutzcab - Xul	YUC-031
45 Piste - Dzitás	YUC-013
46 Progreso - Telchac Puerto	YUC-027
47 Ramal a Chankom	YUC
48 Ramal a Dzonot Carretero	YUC
49 Ramal a San Felipe	YUC
50 Ramal a Tedzidz	YUC
51 Ramal a Yaxcabá	YUC-289
52 Sinanché - Xitibcanul	YUC
53 Suma - Izamal	YUC-081
54 Telchac Puerto - Dzilam de Bravo	YUC
55 Thul - Becanchén	YUC-281
56 Ticul - Chapab	YUC
57 Ticul - Dzan	YUC
58 Tixkokob - Baca	YUC
59 Tixkokob - Sotuta	YUC
60 Tizimín - Yucatán	YUC
61 Yaxché - Sierra Papacal	YUC
62 Yobaín - Chabihau	YUC

---CARRETERAS INTEGRADAS POR TRAMOS FEDERALES Y ESTATALES---

63 Chemax - Cobá	YUC-MEX-180
64 Progreso - Celestún	MEX-YUC

31 YUCATÁN



YUCATÁN

1 CARR: Campeche - Mérida

CLAVE: 00066

RUTA: MEX-180

AÑO: 2025

LUGAR	ESTACION				CLASIFICACION VEHICULAR EN PORCIENTO										COORDENADAS					
	KM	TE	SC	TDPA	M	A	B	C2	C3	T3S2	T3S3	T3S2R4	OTROS	A	B	C	K'	D	LATITUD	LONGITUD
Campeche	0.00	3	1	5017	10.2	79.1	1.1	6.3	1.6	0.7	0.3	0.5	0.2	89.3	1.1	9.6	0.081	0.542	19.890148	-90.468154
Campeche	0.00	3	2	4575	9.9	80.4	0.9	5.9	1.1	0.5	0.4	0.7	0.2	90.3	0.9	8.8	0.082	0.542	19.890219	-90.468212
T. Der. Periferico Pablo García y Montilla (Libramiento De Campeche)	9.85	3	1	8642	5.1	73.2	2.9	6.5	1.5	5.7	1.3	3.5	0.3	78.3	2.9	18.8	0.078	0.571	19.895631	-90.457004
T. Der. Periferico Pablo García y Montilla (Libramiento De Campeche)	9.85	3	2	8666	5.0	73.8	3.4	6.2	1.9	5.4	0.9	2.8	0.6	78.8	3.4	17.8	0.062	0.571	19.897107	-90.454748
T. Der. Hampolol (2do Acceso)	20.00	1	1	6733	4.2	71.3	3.4	2.9	4.2	8.4	1.5	3.3	0.8	75.5	3.4	21.1	0.066	0.576	19.933494	-90.383470
T. Der. Hampolol (2do Acceso)	20.00	1	2	6360	3.6	70.2	3.1	2.7	4.9	8.8	1.9	3.8	1.0	73.8	3.1	23.1	0.083	0.576	19.933603	-90.383527
Acceso a Tenabo	38.30	1	1	6955	4.5	75.0	2.7	4.6	1.2	6.8	1.5	3.2	0.5	79.5	2.7	17.8	0.080	0.562	20.027095	-90.243530
Acceso a Tenabo	38.30	1	2	6731	4.3	74.0	2.4	5.0	1.1	6.5	1.9	3.9	0.9	78.3	2.4	19.3	0.074	0.562	20.027201	-90.243594
X. C. Chencoyi - Tenabo	39.50	1	1	7712	3.3	74.8	3.4	2.5	4.6	7.4	1.2	2.4	0.4	78.1	3.4	18.5	0.069	0.528	20.031059	-90.231319
X. C. Chencoyi - Tenabo	39.50	1	2	7121	3.4	73.7	3.7	2.9	4.4	7.5	1.2	2.3	0.9	77.1	3.7	19.2	0.071	0.528	20.031156	-90.231256
Tenabo	40.00	3	1	6701	3.1	72.1	5.0	3.2	2.3	6.3	2.5	4.6	0.9	75.2	5.0	19.8	0.078	0.555	20.055786	-90.213672
Tenabo	40.00	3	2	6884	2.9	72.6	5.2	3.0	2.5	6.1	2.9	4.0	0.8	75.5	5.2	19.3	0.077	0.555	20.055793	-90.213791
T. Lib de Pomuch Sur	50.80	1	1	7150	4.2	70.8	4.7	4.1	3.9	7.1	1.2	3.2	0.8	75.0	4.7	20.3	0.070	0.565	20.113684	-90.187986
T. Lib de Pomuch Sur	50.80	1	2	6917	4.3	71.1	4.1	3.7	3.6	7.7	0.8	3.8	0.9	75.4	4.1	20.5	0.067	0.565	20.113748	-90.188097
T. Lib de Pomuch Norte	54.80	3	1	7869	7.8	71.5	4.1	2.3	1.4	7.5	1.3	3.4	0.7	79.3	4.1	16.6	0.076	0.555	20.153441	-90.159830
T. Lib de Pomuch Norte	54.80	3	2	7727	7.6	71.3	3.8	2.9	1.8	6.9	0.9	3.9	0.9	78.9	3.8	17.3	0.066	0.555	20.153542	-90.159895
T. C. Acceso a Hecelchakan	57.60	3	1	6890	5.1	70.3	4.4	3.0	2.2	9.2	1.1	3.9	0.8	75.4	4.4	20.2	0.073	0.519	20.165870	-90.141623
T. C. Acceso a Hecelchakan	57.60	3	2	6256	5.2	69.9	4.1	3.2	2.4	8.9	1.2	4.3	0.8	75.1	4.1	20.8	0.075	0.519	20.165948	-90.141675
T. C. Hecelchakan - (T. C. Holpelchen - Bolonchen)	61.20	3	1	6488	4.0	73.2	3.1	3.7	2.3	8.1	1.3	3.4	0.9	77.2	3.1	19.7	0.071	0.505	20.189986	-90.118618
T. C. Hecelchakan - (T. C. Holpelchen - Bolonchen)	61.20	3	2	5547	3.4	73.4	3.2	4.0	2.1	8.5	0.9	3.5	1.0	76.8	3.2	20.0	0.075	0.505	20.190042	-90.118734
Poc Boc	69.00	3	1	6882	4.6	70.0	3.5	3.6	2.0	8.8	1.6	5.1	0.8	74.6	3.5	21.9	0.080	0.562	20.261501	-90.085553
Poc Boc	69.00	3	2	7306	4.4	70.6	3.4	3.9	2.1	8.4	1.4	5.1	0.7	75.0	3.4	21.6	0.068	0.562	20.261570	-90.085656
T. Izq. Dzitbalché	76.50	3	1	6417	4.1	72.4	3.8	3.4	1.8	8.1	1.2	4.4	0.8	76.5	3.8	19.7	0.070	0.598	20.309557	-90.053766
T. Izq. Dzitbalché	76.50	3	2	6576	4.5	71.9	4.4	3.1	1.6	8.6	1.4	3.6	0.9	76.4	4.4	19.2	0.079	0.598	20.309669	-90.053798
Calkiní	84.20	3	1	6288	4.6	69.6	3.7	3.4	2.3	8.8	1.6	5.0	1.0	74.2	3.7	22.1	0.073	0.551	20.376341	-90.039153
Calkiní	84.20	3	2	6315	4.9	70.0	3.9	3.2	2.0	8.5	1.4	5.3	0.8	74.9	3.9	21.2	0.068	0.551	20.376342	-90.039243
T. Der a Tepakán	86.60	3	1	5414	3.1	71.2	4.4	3.0	2.3	9.6	1.4	4.2	0.8	74.3	4.4	21.3	0.077	0.627	20.394379	-90.033586
T. Der a Tepakán	86.60	3	2	5157	2.8	68.8	5.2	3.8	3.0	10.0	1.4	4.0	1.0	71.6	5.2	23.2	0.092	0.627	20.394464	-90.033753
Lim. Edos. Term. Camp. Ppia. Yuc.	96.96																			
T. Der. Maxcanú	109.70	1	1	5435	3.4	68.8	5.2	3.2	1.8	10.3	1.7	4.6	1.0	72.2	5.2	22.6	0.077	0.528	20.560866	-89.980205
T. Der. Maxcanú	109.70	1	2	5185	3.2	69.1	5.0	3.1	1.9	10.3	1.8	4.8	0.8	72.3	5.0	22.7	0.086	0.528	20.560931	-89.980336
T. Der. Maxcanú	109.70	3	1	4959	2.6	68.5	4.3	3.6	2.4	10.6	1.7	5.4	0.9	71.1	4.3	24.6	0.078	0.634	20.596003	-89.970581
T. Der. Maxcanú	109.70	3	2	5286	2.8	70.9	3.8	3.1	2.1	10.2	1.5	4.8	0.8	73.7	3.8	22.5	0.086	0.634	20.596765	-89.970603
T. Der. Kopomá (1er Acceso)	119.50	1	1	7298	2.8	76.5	3.0	3.6	2.9	6.2	1.2	3.1	0.7	79.3	3.0	17.7	0.121	0.705	20.637475	-89.918230
T. Der. Kopomá (1er Acceso)	119.50	1	2	6367	2.7	75.5	2.7	3.8	3.3	6.8	1.1	3.3	0.8	78.2	2.7	19.1	0.156	0.705	20.637779	-89.917955

YUCATÁN

1 CARR: Campeche - Mérida

CLAVE: 00066

RUTA: MEX-180

AÑO: 2025

LUGAR	ESTACION				CLASIFICACION VEHICULAR EN PORCIENTO														COORDENADAS	
	KM	TE	SC	TDPA	M	A	B	C2	C3	T3S2	T3S3	T3S2R4	OTROS	A	B	C	K'	D	LATITUD	LONGITUD
T. Der. Kopomá (2do Acceso)	121.50	1	1	6735	3.0	74.9	3.0	3.3	2.6	7.6	1.1	3.6	0.9	77.9	3.0	19.1	0.109	0.649	20.653820	-89.900559
T. Der. Kopomá (2do Acceso)	121.50	1	2	7484	2.8	75.3	3.3	3.5	2.5	7.6	1.0	3.2	0.8	78.1	3.3	18.6	0.121	0.649	20.653937	-89.900600
T. Der. Kopomá (2do Acceso)	121.50	3	1	7310	3.8	75.3	3.6	3.4	2.0	6.8	1.2	3.0	0.9	79.1	3.6	17.3	0.077	0.528	20.663533	-89.889974
T. Der. Kopomá (2do Acceso)	121.50	3	2	7244	3.4	75.0	3.9	3.3	2.2	6.9	1.5	3.1	0.7	78.4	3.9	17.7	0.096	0.528	20.663604	-89.890083
T. Izq. Chocolá (1er Acceso)	133.00	1	1	6665	2.5	76.3	3.6	3.5	1.7	6.6	1.2	3.8	0.8	78.8	3.6	17.6	0.107	0.628	20.726429	-89.842983
T. Izq. Chocolá (1er Acceso)	133.00	1	2	7383	2.9	75.6	3.4	4.0	1.9	6.2	1.5	3.8	0.7	78.5	3.4	18.1	0.091	0.628	20.726503	-89.843096
T. Izq. Chocolá (1er Acceso)	133.00	3	1	7719	4.1	73.5	3.0	4.8	2.0	7.2	1.1	3.5	0.8	77.6	3.0	19.4	0.116	0.622	20.744392	-89.827847
T. Izq. Chocolá (1er Acceso)	133.00	3	2	7579	4.0	74.0	2.9	4.6	2.2	7.1	1.2	3.4	0.6	78.0	2.9	19.1	0.132	0.622	20.744151	-89.828475
T. Izq. Chocolá (2do Acceso)	135.60	3	1	8798	4.6	71.5	3.3	5.8	3.0	6.2	1.3	3.6	0.7	76.1	3.3	20.6	0.080	0.607	20.764897	-89.825031
T. Izq. Chocolá (2do Acceso)	135.60	3	2	8980	4.4	71.9	2.9	5.7	3.2	6.2	1.2	3.8	0.7	76.3	2.9	20.8	0.099	0.607	20.765149	-89.825082
T. Izq. Umán	139.50	3	1	6859	3.6	73.5	3.7	5.2	2.9	5.9	1.2	3.2	0.8	77.1	3.7	19.2	0.101	0.542	20.802174	-89.804937
T. Izq. Umán	139.50	3	2	7184	3.8	70.8	4.0	5.8	3.2	6.0	1.4	4.0	1.0	74.6	4.0	21.4	0.100	0.542	20.802296	-89.805073
X. C. Campeche - Umán	149.00	1	1	7599	2.8	73.1	3.0	6.0	3.2	6.1	1.6	3.4	0.8	75.9	3.0	21.1	0.082	0.610	20.836185	-89.754881
X. C. Campeche - Umán	149.00	1	2	7810	2.9	70.9	3.3	6.3	3.6	6.9	1.6	3.6	0.9	73.8	3.3	22.9	0.092	0.610	20.836408	-89.754805
T. C. Periférico de Mérida	159.00	1	1	9711	4.4	72.5	2.9	3.4	4.1	6.9	2.7	2.5	0.6	76.9	2.9	20.2	0.097	0.506	20.898249	-89.683754
T. C. Periférico de Mérida	159.00	1	2	9659	4.6	71.7	3.1	3.2	4.4	7.0	2.5	2.7	0.8	76.3	3.1	20.6	0.097	0.506	20.898410	-89.683838

2 CARR: Campeche - Umán

CLAVE: 00164

RUTA: MEX-261

AÑO: 2025

LUGAR	ESTACION				CLASIFICACION VEHICULAR EN PORCIENTO														COORDENADAS	
	KM	TE	SC	TDPA	M	A	B	C2	C3	T3S2	T3S3	T3S2R4	OTROS	A	B	C	K'	D	LATITUD	LONGITUD
Campeche	0.00																			
T. Der. Periférico Pablo García y Montilla (Libramiento De Campeche)	7.85	1	0	5850	12.8	82.1	0.7	2.7	1.0	0.5	0.1	0.1	0.0	94.9	0.7	4.4	0.075	0.633	19.849196	-90.473475
T. Der. Periférico Pablo García y Montilla (Libramiento De Campeche)	7.85	3	0	3395	16.1	77.8	0.8	3.6	0.9	0.5	0.2	0.1	0.0	93.9	0.8	5.3	0.085	0.533	19.848326	-90.452650
T. Izq. Tenabo	31.00	1	0	1912	12.4	78.3	1.2	5.7	0.7	0.9	0.4	0.3	0.1	90.7	1.2	8.1	0.091	0.546	19.805098	-90.283057
T. Izq. Tenabo	31.00	3	0	2019	11.6	74.3	1.4	9.6	1.3	0.9	0.3	0.5	0.1	85.9	1.4	12.7	0.089	0.522	19.804522	-90.272841
T. Der. Edzna	44.70	1	0	1649	12.5	75.9	1.8	7.3	0.8	1.4	0.2	0.1	0.0	88.4	1.8	9.8	0.093	0.706	19.743636	-90.178363
T. Der. Edzna	44.70	3	0	2106	12.9	78.5	0.9	4.1	1.4	1.0	0.6	0.5	0.1	91.4	0.9	7.7	0.087	0.525	19.745203	-90.170995
Hopelchén	85.38	1	0	3000	12.3	77.0	1.0	6.9	1.0	1.4	0.2	0.2	0.0	89.3	1.0	9.7	0.087	0.548	19.753820	-89.854585
Bolonchén de Rejón	120.00	3	0	1594	21.0	67.7	1.8	4.5	1.4	1.8	0.9	0.8	0.1	88.7	1.8	9.5	0.093	0.568	20.012476	-89.734019
Lim. Edos. Term. Camp. Ppia. Yuc.	126.88																			
T. Der. Sayil	146.80	1	0	658	6.6	78.7	2.4	6.4	2.3	1.3	0.9	1.4	0.0	85.3	2.4	12.3	0.091	0.533	20.208270	-89.670534
Santa Elena	160.00	1	0	1285	26.9	60.7	1.4	5.7	2.2	1.6	0.5	0.9	0.1	87.6	1.4	11.0	0.121	0.548	20.319094	-89.643328
T. Izq. Ruinas de Uxmal	173.70	1	0	828	19.0	70.7	0.8	4.8	1.4	1.9	0.6	0.8	0.0	89.7	0.8	9.5	0.081	0.537	20.361445	-89.762095
Muna	189.00	1	0	1674	19.0	74.5	0.7	2.9	1.0	1.0	0.3	0.5	0.1	93.5	0.7	5.8	0.110	0.707	20.460597	-89.725351

YUCATÁN

2 CARR: Campeche - Umán

CLAVE: 00164

RUTA: MEX-261

AÑO: 2025

LUGAR	ESTACION				CLASIFICACION VEHICULAR EN PORCIENTO														COORDENADAS	
	KM	TE	SC	TDPA	M	A	B	C2	C3	T3S2	T3S3	T3S2R4	OTROS	A	B	C	K'	D	LATITUD	LONGITUD
Muna	189.00	3	0	4386	5.4	83.5	1.5	5.6	1.6	1.3	0.6	0.4	0.1	88.9	1.5	9.6	0.095	0.629	20.511464	-89.709208
Xtepén	226.00	1	0	5518	3.4	80.1	1.0	7.9	2.0	2.3	1.5	1.4	0.4	83.5	1.0	15.5	0.089	0.602	20.803580	-89.734160
Umán	233.70	1	0	4841	17.9	66.3	1.2	5.1	3.9	4.0	1.0	0.5	0.1	84.2	1.2	14.6	0.088	0.565	20.866605	-89.746050

3 CARR: Cansahcab - Tizimin

CLAVE: 31014

RUTA: MEX-176

AÑO: 2025

LUGAR	ESTACION				CLASIFICACION VEHICULAR EN PORCIENTO														COORDENADAS	
	KM	TE	SC	TDPA	M	A	B	C2	C3	T3S2	T3S3	T3S2R4	OTROS	A	B	C	K'	D	LATITUD	LONGITUD
Cansahcab	60.00	3	0	4192	4.2	83.3	1.5	3.8	1.9	2.7	1.1	1.3	0.2	87.5	1.5	11.0	0.080	0.616	21.156829	-89.077022
Temax	79.00	3	0	3780	3.1	82.5	1.8	3.7	2.4	3.3	1.3	1.6	0.3	85.6	1.8	12.6	0.075	0.681	21.155511	-88.915910
Buctzotz	95.00	3	0	3308	18.2	68.7	2.4	3.9	1.6	2.9	0.5	1.6	0.2	86.9	2.4	10.7	0.078	0.568	21.199572	-88.773657
Tizimin	160.00	1	0	5312	10.2	76.5	3.0	3.0	1.6	2.8	1.1	1.6	0.2	86.7	3.0	10.3	0.068	0.608	21.150117	-88.187426

4 CARR: Conkal - Puerto Chicxulub

CLAVE: 31004

RUTA: MEX-176

AÑO: 2025

LUGAR	ESTACION				CLASIFICACION VEHICULAR EN PORCIENTO														COORDENADAS	
	KM	TE	SC	TDPA	M	A	B	C2	C3	T3S2	T3S3	T3S2R4	OTROS	A	B	C	K'	D	LATITUD	LONGITUD
Conkal	0.00	3	0	3307	36.0	52.7	1.0	4.4	1.3	2.6	0.9	0.6	0.5	88.7	1.0	10.3	0.070	0.517	21.083457	-89.520024
Puerto Chicxulub	27.00	1	0	2881	32.7	60.2	0.5	3.4	1.2	1.7	0.1	0.2	0.0	92.9	0.5	6.6	0.093	0.513	21.286233	-89.601155

5 CARR: Dzitbalché - Ent. San Bernardo

CLAVE: 00162

RUTA: MEX-180

AÑO: 2025

LUGAR	ESTACION				CLASIFICACION VEHICULAR EN PORCIENTO														COORDENADAS	
	KM	TE	SC	TDPA	M	A	B	C2	C3	T3S2	T3S3	T3S2R4	OTROS	A	B	C	K'	D	LATITUD	LONGITUD
T. C. Campeche - Mérida	0.00																			
T. Izq. Libramiento de Becal (1º Acceso)	12.33	1	0	4523	24.3	69.4	1.6	3.1	0.9	0.4	0.2	0.1	0.0	93.7	1.6	4.7	0.081	0.622	20.418441	-90.034131
T. Izq. Libramiento de Becal (2º Acceso)	15.41	3	0	2191	16.6	76.6	1.2	3.5	0.7	1.0	0.4	0.0	0.0	93.2	1.2	5.6	0.084	0.524	20.449584	-90.038845
Lim. Edos. Term. Camp. Ppia. Yuc.	15.80																			
Halachó	21.08	1	0	2312	23.5	64.9	3.1	6.5	1.0	0.9	0.1	0.0	0.0	88.4	3.1	8.5	0.079	0.500	20.469190	-90.066382
T. Izq. Libramiento de Maxcanú (1º Acceso)	35.60	1	0	3243	26.3	64.0	2.3	5.0	1.1	1.1	0.2	0.0	0.0	90.3	2.3	7.4	0.096	0.700	20.577469	-90.034682
T. Der. Muna	40.36	3	0	4108	8.8	81.2	2.5	5.4	1.0	0.9	0.2	0.0	0.0	90.0	2.5	7.5	0.107	0.780	20.601922	-89.975258
Ent. San Bernardo	41.53																			

YUCATÁN

6 CARR: Ent. Poxilá - Mérida

CLAVE: 31003

RUTA: MEX-180

AÑO: 2025

LUGAR	ESTACION				CLASIFICACION VEHICULAR EN PORCIENTO										COORDENADAS					
	KM	TE	SC	TDPA	M	A	B	C2	C3	T3S2	T3S3	T3S2R4	OTROS	A	B	C	K'	D	LATITUD	LONGITUD
T. C. Campeche - Mérida	0.00																			
Umán	9.46	1	0	3512	23.7	61.8	1.6	5.7	3.4	2.9	0.4	0.4	0.1	85.5	1.6	12.9	0.091	0.508	20.866487	-89.757815
X. Periférico de Mérida	16.37	1	1	20717	11.6	74.5	1.6	5.0	2.5	2.7	0.7	1.0	0.4	86.1	1.6	12.3	0.077	0.517	20.920833	-89.695971
X. Periférico de Mérida	16.37	1	2	21268	11.4	75.2	1.3	4.8	2.3	2.9	1.0	0.9	0.2	86.6	1.3	12.1	0.075	0.517	20.920933	-89.696029
Mérida	25.70	1	1	23470	11.3	74.9	2.3	5.2	2.0	1.8	0.8	1.5	0.2	86.2	2.3	11.5	0.070	0.514	20.926781	-89.684197
Mérida	25.70	1	2	24798	11.5	74.8	2.0	5.4	2.2	1.5	1.0	1.3	0.3	86.3	2.0	11.7	0.081	0.514	20.927085	-89.684207

7 CARR: Hunucmá - Sisal

CLAVE: 31021

RUTA: MEX-281

AÑO: 2025

LUGAR	ESTACION				CLASIFICACION VEHICULAR EN PORCIENTO										COORDENADAS					
	KM	TE	SC	TDPA	M	A	B	C2	C3	T3S2	T3S3	T3S2R4	OTROS	A	B	C	K'	D	LATITUD	LONGITUD
Hunucmá	0.00	3	0	3274	20.8	73.6	0.4	4.0	0.6	0.5	0.1	0.0	0.0	94.4	0.4	5.2	0.122	0.915	21.030310	-89.896505
Sisal	23.20	1	0	3056	19.7	74.1	0.8	4.3	0.6	0.4	0.1	0.0	0.0	93.8	0.8	5.4	0.115	0.652	21.162019	-90.030564

8 CARR: Libramiento Conkal - Mococho - Baca

CLAVE:

RUTA: MEX-176

AÑO: 2025

LUGAR	ESTACION				CLASIFICACION VEHICULAR EN PORCIENTO										COORDENADAS					
	KM	TE	SC	TDPA	M	A	B	C2	C3	T3S2	T3S3	T3S2R4	OTROS	A	B	C	K'	D	LATITUD	LONGITUD
T. C. Mérida - Dzilam de Bravo (Oeste)	4.40	3	1	9584	6.3	85.6	0.7	2.4	2.0	1.3	0.6	0.8	0.3	91.9	0.7	7.4	0.090	0.594	21.053568	-89.530237
T. C. Mérida - Dzilam de Bravo (Oeste)	4.40	3	2	9066	6.3	85.6	0.7	2.4	1.9	1.4	0.5	0.9	0.3	91.9	0.7	7.4	0.113	0.594	21.053648	-89.530264
X. C. Conkal - Yaxkukul	8.74	3	1	7211	7.0	84.6	1.3	2.8	1.6	1.5	0.6	0.5	0.1	91.6	1.3	7.1	0.104	0.620	21.066366	-89.497206
X. C. Conkal - Yaxkukul	8.74	3	2	7351	6.8	84.3	1.4	2.8	1.8	1.6	0.7	0.5	0.1	91.1	1.4	7.5	0.115	0.620	21.066428	-89.497315
X. C. Tixkokob - Baca	20.86	1	1	6356	6.5	85.4	1.3	2.8	1.6	1.2	0.6	0.5	0.1	91.9	1.3	6.8	0.116	0.641	21.099719	-89.403377
X. C. Tixkokob - Baca	20.86	1	2	6362	6.4	85.4	1.3	2.9	1.6	1.2	0.6	0.5	0.1	91.8	1.3	6.9	0.117	0.641	21.099800	-89.403367
T. C. Mérida - Dzilam de Bravo (Este)	24.41	1	1	5742	9.0	84.3	0.6	2.4	1.4	1.1	0.6	0.5	0.1	93.3	0.6	6.1	0.125	0.655	21.103252	-89.370080
T. C. Mérida - Dzilam de Bravo (Este)	24.41	1	2	5570	8.9	84.0	0.6	2.7	1.4	1.1	0.6	0.6	0.1	92.9	0.6	6.5	0.126	0.655	21.103338	-89.370157

9 CARR: Libramiento de Conkal

CLAVE:

RUTA: MEX

AÑO: 2025

LUGAR	ESTACION				CLASIFICACION VEHICULAR EN PORCIENTO										COORDENADAS					
	KM	TE	SC	TDPA	M	A	B	C2	C3	T3S2	T3S3	T3S2R4	OTROS	A	B	C	K'	D	LATITUD	LONGITUD
T. C. Mérida - Dzilam de Bravo	0.00	3	0	11634	7.2	82.9	1.2	5.0	1.3	1.0	0.6	0.5	0.3	90.1	1.2	8.7	0.084	0.636	21.054895	-89.546898
X. C. Conkal - Chablekal	4.80																			
T. C. Conkal - Puerto Chicxulub	14.00	1	0	2200	5.7	75.1	2.6	5.8	2.9	2.4	2.4	2.4	0.7	80.8	2.6	16.6	0.082	0.597	21.151784	-89.531332

YUCATÁN

10 CARR: Libramiento de Progreso

CLAVE: 31631

RUTA: MEX-261

AÑO: 2025

LUGAR	ESTACION				CLASIFICACION VEHICULAR EN PORCIENTO										COORDENADAS					
	KM	TE	SC	TDPA	M	A	B	C2	C3	T3S2	T3S3	T3S2R4	OTROS	A	B	C	K'	D	LATITUD	LONGITUD
T. C. Mérida - Progreso	0.00	3	0	4237	6.7	82.0	0.7	5.9	1.6	1.9	0.6	0.3	0.3	88.7	0.7	10.6	0.074	0.533	21.258031	-89.666349
Yucalpetén	6.50	1	0	4437	6.2	85.0	0.8	4.9	0.9	1.0	0.5	0.4	0.3	91.2	0.8	8.0	0.071	0.513	21.271248	-89.712346

11 CARR: Libramiento de Tahmek - Hoctun - Xocchel

CLAVE:

RUTA: MEX-180

AÑO: 2025

LUGAR	ESTACION				CLASIFICACION VEHICULAR EN PORCIENTO										COORDENADAS					
	KM	TE	SC	TDPA	M	A	B	C2	C3	T3S2	T3S3	T3S2R4	OTROS	A	B	C	K'	D	LATITUD	LONGITUD
Tahmek	42.00	3	1	5666	4.1	75.1	3.2	3.5	2.6	5.1	2.0	3.4	1.0	79.2	3.2	17.6	0.086	0.515	20.883129	-89.241096
Tahmek	42.00	3	2	5870	4.4	75.5	2.8	3.7	2.6	5.1	1.6	3.6	0.7	79.9	2.8	17.3	0.103	0.515	20.883246	-89.241071
X. C. Hoctún - Cenotillo	48.30	3	1	4519	2.2	75.9	3.2	3.7	3.1	5.0	1.5	4.3	1.1	78.1	3.2	18.7	0.084	0.659	20.869949	-89.188813
X. C. Hoctún - Cenotillo	48.30	3	2	4609	2.5	74.1	3.1	4.0	3.2	5.5	1.7	5.0	0.9	76.6	3.1	20.3	0.110	0.659	20.870027	-89.188716
T. C. Mérida - Puerto Juárez	55.90																			

12 CARR: Mérida - Celestún

CLAVE: 31025

RUTA: MEX-281

AÑO: 2025

LUGAR	ESTACION				CLASIFICACION VEHICULAR EN PORCIENTO										COORDENADAS					
	KM	TE	SC	TDPA	M	A	B	C2	C3	T3S2	T3S3	T3S2R4	OTROS	A	B	C	K'	D	LATITUD	LONGITUD
Mérida	0.00	3	1	18323	8.4	84.6	0.9	4.2	0.7	0.6	0.1	0.3	0.2	93.0	0.9	6.1	0.082	0.536	20.986418	-89.658363
Mérida	0.00	3	2	18187	8.2	84.5	1.1	4.4	0.9	0.5	0.1	0.2	0.1	92.7	1.1	6.2	0.079	0.536	20.986170	-89.658222
X. Periférico de Mérida	5.10	1	1	20494	8.5	86.0	0.8	2.7	0.5	0.3	0.1	0.8	0.3	94.5	0.8	4.7	0.071	0.523	20.992836	-89.668730
X. Periférico de Mérida	5.10	1	2	20829	8.3	86.6	1.0	2.4	0.5	0.3	0.2	0.6	0.1	94.9	1.0	4.1	0.076	0.523	20.992779	-89.668883
X. Periférico de Mérida	5.10	3	1	34164	5.6	89.3	0.8	2.6	0.5	0.3	0.5	0.2	0.2	94.9	0.8	4.3	0.069	0.551	20.999650	-89.679731
X. Periférico de Mérida	5.10	3	2	32583	5.3	88.5	1.1	2.9	0.7	0.5	0.6	0.3	0.1	93.8	1.1	5.1	0.070	0.551	20.999625	-89.679884
Ucú	14.80	1	0	6532	16.3	71.1	1.4	8.6	1.0	1.1	0.1	0.3	0.1	87.4	1.4	11.2	0.073	0.507	21.027235	-89.734149
Hunucmá	26.00	1	0	2443	16.0	66.6	2.6	12.4	0.5	1.6	0.2	0.1	0.0	82.6	2.6	14.8	0.087	0.627	21.027514	-89.850169
Hunucmá	26.00	3	0	3248	31.7	51.9	1.7	9.6	1.7	2.4	0.5	0.4	0.1	83.6	1.7	14.7	0.077	0.520	21.002400	-89.886367
Kinchil	40.00	3	0	1698	10.1	74.5	1.2	8.3	3.6	1.9	0.4	0.0	0.0	84.6	1.2	14.2	0.102	0.833	20.911454	-89.964206
T. Izq. San Mateo	67.00	1	0	1517	3.3	87.2	1.5	6.6	0.9	0.4	0.1	0.0	0.0	90.5	1.5	8.0	0.105	0.894	20.859810	-90.187605
Celestún	89.00	1	0	1691	14.3	70.2	4.6	7.0	2.4	1.0	0.4	0.1	0.0	84.5	4.6	10.9	0.098	0.824	20.857540	-90.381246

13 CARR: Mérida - Dzilam de Bravo

CLAVE: 31001

RUTA: MEX-176

AÑO: 2025

LUGAR	ESTACION				CLASIFICACION VEHICULAR EN PORCIENTO										COORDENADAS					
	KM	TE	SC	TDPA	M	A	B	C2	C3	T3S2	T3S3	T3S2R4	OTROS	A	B	C	K'	D	LATITUD	LONGITUD
Mérida	0.00																			

YUCATÁN

13 CARR: Mérida - Dzilam de Bravo

CLAVE: 31001

RUTA: MEX-176

AÑO: 2025

LUGAR	ESTACION				CLASIFICACION VEHICULAR EN PORCIENTO										COORDENADAS					
	KM	TE	SC	TDPA	M	A	B	C2	C3	T3S2	T3S3	T3S2R4	OTROS	A	B	C	K'	D	LATITUD	LONGITUD
X. Periférico de Mérida	5.90	1	1	12611	6.3	89.5	0.5	1.7	0.4	0.5	0.3	0.5	0.3	95.8	0.5	3.7	0.072	0.512	21.020093	-89.567768
X. Periférico de Mérida	5.90	1	2	12869	6.3	89.5	0.5	1.7	0.4	0.5	0.3	0.5	0.3	95.8	0.5	3.7	0.080	0.512	21.020185	-89.567828
X. Periférico de Mérida	5.90	3	1	21163	6.1	86.5	1.6	2.6	1.0	1.3	0.3	0.4	0.2	92.6	1.6	5.8	0.071	0.513	21.037949	-89.550376
X. Periférico de Mérida	5.90	3	2	20528	6.1	86.5	1.6	2.6	1.0	1.3	0.3	0.4	0.2	92.6	1.6	5.8	0.077	0.513	21.037981	-89.550459
Conkal	18.00	1	1	17996	8.4	85.3	0.8	2.0	1.2	1.1	0.4	0.6	0.2	93.7	0.8	5.5	0.086	0.608	21.050617	-89.537917
Conkal	18.00	1	2	17769	8.3	85.4	0.8	2.0	1.2	1.1	0.4	0.6	0.2	93.7	0.8	5.5	0.102	0.608	21.050375	-89.538382
Baca	34.40	1	0	2490	37.1	52.7	0.7	6.2	0.5	2.0	0.5	0.2	0.1	89.8	0.7	9.5	0.091	0.611	21.109061	-89.408374
Motul	44.00	1	1	6948	12.7	75.6	0.8	7.4	1.0	1.3	0.6	0.5	0.1	88.3	0.8	10.9	0.093	0.644	21.097850	-89.316208
Motul	44.00	1	2	7156	12.9	75.4	0.8	7.4	1.0	1.3	0.6	0.5	0.1	88.3	0.8	10.9	0.111	0.644	21.097931	-89.315782
Motul	44.00	3	0	5807	6.9	82.8	1.2	3.6	1.9	2.2	0.4	0.9	0.1	89.7	1.2	9.1	0.082	0.541	21.115713	-89.270951
Cansahcab	68.00	3	0	2253	24.1	71.8	0.5	2.3	0.9	0.2	0.1	0.1	0.0	95.9	0.5	3.6	0.084	0.651	21.165095	-89.100814
Dzidzantún	80.00	1	0	2008	21.5	73.6	0.6	3.6	0.6	0.1	0.0	0.0	0.0	95.1	0.6	4.3	0.087	0.566	21.235508	-89.051578
Dzilam de Bravo	105.00	1	0	3242	50.6	41.2	0.4	4.5	0.7	1.6	0.7	0.2	0.1	91.8	0.4	7.8	0.091	0.656	21.389889	-88.891949

14 CARR: Mérida - Progreso

CLAVE: 31091

RUTA: MEX-261

AÑO: 2025

LUGAR	ESTACION				CLASIFICACION VEHICULAR EN PORCIENTO										COORDENADAS					
	KM	TE	SC	TDPA	M	A	B	C2	C3	T3S2	T3S3	T3S2R4	OTROS	A	B	C	K'	D	LATITUD	LONGITUD
T. C. Mérida - Dzilam de Bravo	0.00																			
Periférico Mérida	5.40	1	1	28332	6.0	88.2	0.5	1.2	0.7	0.8	0.4	1.6	0.6	94.2	0.5	5.3	0.070	0.503	21.043361	-89.629112
Periférico Mérida	5.40	1	2	29224	6.2	88.2	0.4	1.0	0.9	0.6	0.3	1.7	0.7	94.4	0.4	5.2	0.073	0.503	21.043334	-89.629364
T. Izq. Dzityá	10.40	1	1	55385	6.7	87.9	0.5	1.5	1.2	0.8	0.2	1.0	0.2	94.6	0.5	4.9	0.073	0.577	21.053026	-89.630796
T. Izq. Dzityá	10.40	1	2	49719	6.6	86.9	0.9	1.6	1.3	1.0	0.1	1.2	0.4	93.5	0.9	5.6	0.069	0.577	21.052930	-89.631074
T. Izq. Dzityá	10.40	3	1	48451	5.6	87.9	0.6	1.6	1.1	1.0	0.4	1.4	0.4	93.5	0.6	5.9	0.073	0.568	21.068425	-89.633368
T. Izq. Dzityá	10.40	3	2	46914	5.8	88.3	0.8	1.5	1.0	0.9	0.3	1.1	0.3	94.1	0.8	5.1	0.081	0.568	21.066617	-89.633502
T. Izq. Komchén	15.30	3	1	17703	5.5	86.3	0.9	2.0	1.2	1.8	0.8	1.2	0.3	91.8	0.9	7.3	0.078	0.516	21.113836	-89.640882
T. Izq. Komchén	15.30	3	2	17416	5.7	85.1	1.2	2.3	1.5	2.0	0.7	1.2	0.3	90.8	1.2	8.0	0.073	0.516	21.113570	-89.641118
Progreso	35.04	1	1	12971	5.9	84.6	1.0	3.0	1.3	1.8	0.9	1.3	0.2	90.5	1.0	8.5	0.087	0.538	21.265100	-89.660352
Progreso	35.04	1	2	12636	6.0	84.5	1.0	3.0	1.3	1.8	0.9	1.3	0.2	90.5	1.0	8.5	0.087	0.538	21.266147	-89.661067

15 CARR: Mérida - Puerto Juárez

CLAVE: 00067

RUTA: MEX-180

AÑO: 2025

LUGAR	ESTACION				CLASIFICACION VEHICULAR EN PORCIENTO										COORDENADAS					
	KM	TE	SC	TDPA	M	A	B	C2	C3	T3S2	T3S3	T3S2R4	OTROS	A	B	C	K'	D	LATITUD	LONGITUD
Mérida	0.00																			

YUCATÁN

15 CARR: Mérida - Puerto Juárez

CLAVE: 00067

RUTA: MEX-180

AÑO: 2025

LUGAR	ESTACION				CLASIFICACION VEHICULAR EN PORCIENTO													COORDENADAS		
	KM	TE	SC	TDPA	M	A	B	C2	C3	T3S2	T3S3	T3S2R4	OTROS	A	B	C	K'	D	LATITUD	LONGITUD
X. Periférico de Mérida	5.60	1	1	14060	13.5	80.7	0.7	3.1	0.8	0.4	0.4	0.3	0.1	94.2	0.7	5.1	0.076	0.542	20.956878	-89.570748
X. Periférico de Mérida	5.60	1	2	14106	13.3	80.9	0.7	3.1	0.9	0.4	0.3	0.3	0.1	94.2	0.7	5.1	0.078	0.542	20.956914	-89.570608
X. Periférico de Mérida	5.60	3	1	19452	12.0	74.3	1.6	4.0	1.9	2.6	1.1	2.0	0.5	86.3	1.6	12.1	0.064	0.501	20.953658	-89.564427
X. Periférico de Mérida	5.60	3	2	20125	12.0	76.1	1.2	3.8	1.8	2.6	0.6	1.6	0.3	88.1	1.2	10.7	0.064	0.501	20.953732	-89.564329
Teya	13.00	1	1	15226	7.8	77.1	2.7	3.7	2.3	3.1	0.6	2.1	0.6	84.9	2.7	12.4	0.079	0.578	20.935144	-89.527542
Teya	13.00	1	2	15765	7.6	76.6	2.5	4.2	2.5	3.2	0.8	2.0	0.6	84.2	2.5	13.3	0.092	0.578	20.935237	-89.527498
T. C. Teya - Peto	14.20	3	1	8224	10.5	72.2	2.8	4.5	2.9	3.2	1.0	2.3	0.6	82.7	2.8	14.5	0.100	0.555	20.922004	-89.495398
T. C. Teya - Peto	14.20	3	2	8464	10.5	72.4	2.8	4.4	2.6	3.4	1.0	2.3	0.6	82.9	2.8	14.3	0.106	0.555	20.922033	-89.495239
T. Der. Ticopó	21.40	3	1	8388	9.8	73.7	2.6	4.6	2.4	3.2	0.7	2.4	0.6	83.5	2.6	13.9	0.083	0.544	20.893156	-89.435388
T. Der. Ticopó	21.40	3	2	8587	9.6	73.6	2.4	4.5	2.0	3.7	0.9	2.5	0.8	83.2	2.4	14.4	0.105	0.544	20.893263	-89.435365
T. Der. Seyé	28.79	1	1	8686	5.5	78.2	2.9	4.2	1.6	3.0	1.1	2.8	0.7	83.7	2.9	13.4	0.071	0.628	20.895818	-89.391642
T. Der. Seyé	28.79	1	2	9125	5.4	78.7	3.0	4.4	1.5	3.1	1.1	2.2	0.6	84.1	3.0	12.9	0.082	0.628	20.895916	-89.391584
T. Der. Seyé	28.79	3	1	6833	5.7	76.3	2.8	4.6	1.7	3.6	1.6	2.9	0.8	82.0	2.8	15.2	0.091	0.537	20.891733	-89.374370
T. Der. Seyé	28.79	3	2	6843	5.5	77.2	2.9	4.5	1.7	3.4	1.5	2.6	0.7	82.7	2.9	14.4	0.106	0.537	20.891884	-89.373865
Tahmek (1er Acceso)	40.00	1	1	6890	4.4	76.3	2.6	5.0	2.4	4.0	1.1	3.1	1.1	80.7	2.6	16.7	0.080	0.730	20.876042	-89.279087
Tahmek (1er Acceso)	40.00	1	2	7167	4.2	76.6	2.9	4.9	2.0	4.4	1.0	3.0	1.0	80.8	2.9	16.3	0.105	0.730	20.876156	-89.279048
T. C. Libramiento de Tahmek - Hoctun - Xocchel Oeste	42.00	1	1	6899	3.0	79.6	3.0	3.8	1.8	3.9	0.9	3.2	0.8	82.6	3.0	14.4	0.075	0.517	20.881253	-89.259540
T. C. Libramiento de Tahmek - Hoctun - Xocchel Oeste	42.00	1	2	7042	2.9	80.5	3.2	4.3	1.5	3.5	0.6	2.8	0.7	83.4	3.2	13.4	0.086	0.517	20.881347	-89.259602
T. Izq. Hoctún (1º Acceso)	46.65	1	0	2963	10.8	76.9	2.0	7.4	1.3	1.0	0.4	0.2	0.0	87.7	2.0	10.3	0.075	0.619	20.867620	-89.214673
T. Izq. Hoctún (2º Acceso)	48.62	1	0	1530	10.7	77.7	1.4	7.6	0.9	0.8	0.5	0.4	0.0	88.4	1.4	10.2	0.071	0.706	20.858569	-89.201785
T. Izq. Hoctún (2º Acceso)	48.62	3	0	2827	28.2	61.7	1.6	6.4	1.0	0.5	0.3	0.2	0.1	89.9	1.6	8.5	0.076	0.630	20.854941	-89.196293
Xocchel	51.70																			
T. C. Libramiento de Tahmek - Hoctun - Xocchel	56.00	1	0	485	25.2	57.9	1.4	11.0	2.1	1.5	0.3	0.6	0.0	83.1	1.4	15.5	0.113	0.509	20.830956	-89.166728
Kantunil	67.28	1	1	4912	3.2	77.0	3.1	3.7	2.3	4.5	1.2	4.1	0.9	80.2	3.1	16.7	0.089	0.551	20.801953	-89.053571
Kantunil	67.28	1	2	4298	3.1	76.4	3.2	3.9	2.3	4.7	1.4	4.2	0.8	79.5	3.2	17.3	0.114	0.551	20.802038	-89.053444
Kantunil	67.28	3	0	5249	6.5	78.4	2.4	4.9	3.4	2.6	0.9	0.8	0.1	84.9	2.4	12.7	0.079	0.539	20.791188	-89.019077
Libre Unión	92.91	1	0	3334	5.5	77.6	3.3	6.1	3.1	2.1	1.3	0.9	0.1	83.1	3.3	13.6	0.087	0.622	20.708792	-88.818041
Libre Unión	92.91	3	0	2963	6.3	77.0	3.0	6.3	3.1	2.1	1.5	0.6	0.1	83.3	3.0	13.7	0.101	0.595	20.706923	-88.799715
Piste	116.30	3	0	10176	14.9	77.5	1.7	2.6	1.9	0.7	0.3	0.3	0.1	92.4	1.7	5.9	0.090	0.630	20.690927	-88.579693
1er. Acceso a Zona Arqueológica de Chichen-Itzá	117.90	3	0	7869	14.2	73.0	2.4	5.2	1.4	2.2	0.7	0.6	0.3	87.2	2.4	10.4	0.086	0.610	20.688326	-88.572400
2do. Acceso a Zona Arqueológica de Chichen-Itzá	121.10	3	0	5884	14.5	74.3	2.3	4.3	2.0	1.6	0.4	0.5	0.1	88.8	2.3	8.9	0.093	0.607	20.668815	-88.556557
T. Der. Chankom	127.00	1	0	5401	9.0	76.7	3.5	5.3	2.2	1.3	0.8	1.0	0.2	85.7	3.5	10.8	0.104	0.641	20.644181	-88.495171
T. Der. Chankom	127.00	3	0	4837	7.8	78.3	2.8	5.7	2.5	1.7	0.6	0.5	0.1	86.1	2.8	11.1	0.107	0.632	20.637636	-88.474660
Kaua	137.47	3	0	6113	8.8	78.5	3.5	4.4	1.9	1.4	0.6	0.7	0.2	87.3	3.5	9.2	0.094	0.626	20.623598	-88.401764
X. C. Periférico de Valladolid	157.12	1	0	9083	12.3	76.3	2.8	4.0	1.8	1.2	0.6	0.9	0.1	88.6	2.8	8.6	0.087	0.595	20.673464	-88.248462

YUCATÁN

15 CARR: Mérida - Puerto Juárez

CLAVE: 00067

RUTA: MEX-180

AÑO: 2025

LUGAR	ESTACION				CLASIFICACION VEHICULAR EN PORCIENTO										COORDENADAS					
	KM	TE	SC	TDPA	M	A	B	C2	C3	T3S2	T3S3	T3S2R4	OTROS	A	B	C	K'	D	LATITUD	LONGITUD
Valladolid	160.68	1	0	9729	19.4	74.9	1.6	3.0	0.5	0.3	0.1	0.2	0.0	94.3	1.6	4.1	0.090	0.680	20.682788	-88.233521
Valladolid	160.68	3	0	8844	23.0	71.7	0.9	2.3	0.9	0.5	0.1	0.5	0.1	94.7	0.9	4.4	0.090	0.549	20.694975	-88.164018
X. C. Periférico de Valladolid	165.60	3	0	11004	13.0	74.9	1.8	2.9	2.8	2.5	0.8	1.2	0.1	87.9	1.8	10.3	0.075	0.579	20.696278	-88.155113
T. Der. Coba	187.80	1	0	7722	6.2	81.6	1.9	3.2	2.1	2.8	0.8	1.1	0.3	87.8	1.9	10.3	0.086	0.577	20.659642	-87.961779
T. Der. Chemax	189.79	1	0	5772	10.2	81.0	1.3	3.4	1.3	1.3	0.3	0.8	0.4	91.2	1.3	7.5	0.093	0.504	20.657881	-87.951525
T. Der. Chemax	189.79	3	0	4686	9.4	79.2	1.5	3.9	2.2	2.3	0.5	0.9	0.1	88.6	1.5	9.9	0.088	0.590	20.666374	-87.923166
X-Can	225.00	3	0	3476	4.8	82.9	2.1	4.4	2.0	2.2	0.7	0.7	0.2	87.7	2.1	10.2	0.080	0.705	20.860448	-87.656785
Lim. Edos. Term. Yuc. Ppia. Q. R.	230.40																			
Nuevo X-Can	231.90	3	0	4428	4.1	83.9	1.5	5.0	2.1	2.2	0.5	0.5	0.2	88.0	1.5	10.5	0.077	0.638	20.871577	-87.591142
Zaragoza	239.00	1	0	5711	11.0	76.8	2.1	4.7	1.9	2.2	0.7	0.5	0.1	87.8	2.1	10.1	0.074	0.591	20.880576	-87.537662
Zaragoza	239.00	3	0	4150	6.5	79.5	1.9	5.7	2.5	2.7	0.4	0.7	0.1	86.0	1.9	12.1	0.077	0.682	20.883935	-87.517716
Vicente Guerrero	261.00	1	0	4648	8.5	77.7	1.8	4.9	3.7	2.3	0.5	0.5	0.1	86.2	1.8	12.0	0.069	0.699	20.940875	-87.331815
Leona Vicario	275.50	1	0	5960	5.4	81.8	2.2	4.8	1.6	2.7	0.8	0.6	0.1	87.2	2.2	10.6	0.075	0.698	20.979981	-87.225879
Leona Vicario	275.50	3	0	8796	14.7	75.5	2.1	3.8	1.3	1.5	0.4	0.6	0.1	90.2	2.1	7.7	0.073	0.594	20.993427	-87.188800
T. Der. Aeropuerto	302.50	1	0	10838	6.1	82.2	1.6	3.9	3.3	1.6	0.7	0.5	0.1	88.3	1.6	10.1	0.074	0.602	21.096412	-86.982974
T. Der. Aeropuerto	302.50	3	1	6484	5.3	75.3	1.8	8.6	3.7	2.2	0.8	1.7	0.6	80.6	1.8	17.6	0.085	0.537	21.102759	-86.970021
T. Der. Aeropuerto	302.50	3	2	7058	5.2	75.5	2.0	8.4	3.7	2.0	0.9	1.8	0.5	80.7	2.0	17.3	0.083	0.537	21.102885	-86.970111
T. Der. Alfredo V. Bonfil	310.00	1	1	34332	7.9	81.8	1.1	2.9	1.6	1.7	0.3	2.3	0.4	89.7	1.1	9.2	0.068	0.571	21.138152	-86.899046
T. Der. Alfredo V. Bonfil	310.00	1	2	35133	7.7	82.6	1.0	2.6	1.9	1.4	0.2	2.4	0.2	90.3	1.0	8.7	0.063	0.571	21.138372	-86.898919
Puerto Juárez	321.41																			

16 CARR: Mérida - Tekanto

CLAVE: 31587

RUTA: MEX-180

AÑO: 2025

LUGAR	ESTACION				CLASIFICACION VEHICULAR EN PORCIENTO										COORDENADAS					
	KM	TE	SC	TDPA	M	A	B	C2	C3	T3S2	T3S3	T3S2R4	OTROS	A	B	C	K'	D	LATITUD	LONGITUD
T. C. Mérida - Puerto Juárez	0.00																			
X. Periférico de Mérida	5.70	1	0	21314	10.8	82.1	0.5	2.8	0.8	0.7	1.1	0.8	0.4	92.9	0.5	6.6	0.060	0.578	20.961137	-89.570772
T. Der. Tixpéhual	13.25	1	0	9677	18.7	73.6	0.9	3.2	1.9	0.8	0.6	0.2	0.1	92.3	0.9	6.8	0.067	0.649	20.976413	-89.463399
T. Der. Tixpéhual	13.25	3	0	4487	4.3	84.3	0.9	5.9	1.6	1.0	0.4	1.2	0.4	88.6	0.9	10.5	0.092	0.746	20.984028	-89.453083
Tixkokob	21.00	1	0	6369	3.5	86.4	1.7	5.3	1.2	0.9	0.7	0.2	0.1	89.9	1.7	8.4	0.071	0.601	20.999205	-89.425523
Tixkokob	21.00	3	0	4582	32.7	61.0	0.4	4.2	1.3	0.2	0.1	0.1	0.0	93.7	0.4	5.9	0.070	0.619	21.000303	-89.373988
Cacalchén	38.00	1	0	2405	26.8	65.2	1.1	5.1	1.2	0.5	0.1	0.0	0.0	92.0	1.1	6.9	0.070	0.822	20.985752	-89.247353
Tekanto	51.00	1	0	1904	43.7	48.4	0.7	5.8	1.2	0.1	0.0	0.1	0.0	92.1	0.7	7.2	0.068	0.554	21.010430	-89.118219

YUCATÁN

17 CARR: Mérida - Tetiz

CLAVE: 31610

RUTA: MEX-281

AÑO: 2025

LUGAR	ESTACION				CLASIFICACION VEHICULAR EN PORCIENTO										COORDENADAS					
	KM	TE	SC	TDPA	M	A	B	C2	C3	T3S2	T3S3	T3S2R4	OTROS	A	B	C	K'	D	LATITUD	LONGITUD
Anillo Periferico Lic. Manuel Berzunza	0.00	3	0	18698	7.6	85.3	0.8	3.1	0.9	1.3	0.3	0.5	0.2	92.9	0.8	6.3	0.106	0.656	20.983671	-89.699679
X. C. Hunucmá - Umán	17.98	1	0	9346	12.7	75.4	1.4	6.3	0.8	2.0	0.4	0.8	0.2	88.1	1.4	10.5	0.080	0.824	20.981847	-89.843322
X. C. Hunucmá - Umán	17.98	3	0	3195	9.6	80.2	1.8	4.2	1.2	2.5	0.2	0.3	0.0	89.8	1.8	8.4	0.083	0.555	20.979271	-89.860948
X. C. Mérida - Celestún	24.40	1	0	1397	14.6	76.2	0.9	6.2	1.2	0.8	0.1	0.0	0.0	90.8	0.9	8.3	0.093	0.562	20.979234	-89.908155

18 CARR: Muna - Felipe Carrillo Puerto

CLAVE: 00148

RUTA: MEX-184

AÑO: 2025

LUGAR	ESTACION				CLASIFICACION VEHICULAR EN PORCIENTO										COORDENADAS					
	KM	TE	SC	TDPA	M	A	B	C2	C3	T3S2	T3S3	T3S2R4	OTROS	A	B	C	K'	D	LATITUD	LONGITUD
Muna	0.00	3	0	5139	8.7	76.3	1.2	8.8	1.1	1.6	0.8	1.0	0.5	85.0	1.2	13.8	0.077	0.556	20.475155	-89.695241
Ticul	19.10	1	0	3741	8.5	77.2	1.2	8.6	1.2	1.6	0.8	0.8	0.1	85.7	1.2	13.1	0.082	0.574	20.407160	-89.574487
Ticul	19.10	3	0	8297	35.2	52.8	1.3	5.0	0.6	3.5	0.6	0.4	0.6	88.0	1.3	10.7	0.092	0.545	20.373282	-89.517423
Oxkutzcab	40.50	3	0	7175	21.3	66.6	1.3	5.5	1.2	1.6	1.4	0.7	0.4	87.9	1.3	10.8	0.083	0.603	20.281694	-89.374505
Tekax	53.90	3	0	5465	44.3	49.2	0.6	3.1	1.2	0.7	0.3	0.5	0.1	93.5	0.6	5.9	0.116	0.510	20.189061	-89.268750
Tzucacab	86.60	1	0	1903	35.3	58.2	0.7	4.5	0.6	0.4	0.2	0.1	0.0	93.5	0.7	5.8	0.088	0.506	20.078574	-89.062402
Tzucacab	86.60	3	0	1236	40.6	56.8	0.4	1.2	0.6	0.2	0.2	0.0	0.0	97.4	0.4	2.2	0.092	0.658	20.061804	-89.035655
Santa Rosa	109.60	3	0	2233	7.9	76.2	3.0	4.9	1.7	2.0	0.8	2.8	0.7	84.1	3.0	12.9	0.090	0.540	19.947272	-88.880194
Lim. Edos. Term. Yuc. Ppia. Q. R.	117.00																			
Dziuche	118.00	1	0	2419	7.3	75.9	3.3	4.9	1.9	1.8	1.0	3.1	0.8	83.2	3.3	13.5	0.091	0.530	19.905499	-88.819736
Dziuche	118.00	3	0	3590	6.5	74.6	3.4	7.3	2.4	2.0	0.9	2.5	0.4	81.1	3.4	15.5	0.074	0.504	19.888350	-88.803513
José María Morelos	138.60	1	0	4693	15.3	75.7	1.5	3.4	1.3	0.8	0.3	1.3	0.4	91.0	1.5	7.5	0.081	0.547	19.764606	-88.725282
José María Morelos	138.60	3	0	3328	12.3	73.8	2.3	3.6	2.1	2.0	1.2	2.4	0.3	86.1	2.3	11.6	0.071	0.500	19.736541	-88.691429
Polyuc	161.94	1	0	2855	12.5	72.3	2.5	5.0	1.8	2.1	0.9	2.7	0.2	84.8	2.5	12.7	0.076	0.525	19.611357	-88.571475
Polyuc	161.94	3	0	1590	9.4	80.0	1.7	4.3	1.6	1.5	0.7	0.4	0.4	89.4	1.7	8.9	0.081	0.570	19.609514	-88.553363
T. Der. Dzulá	178.11	3	0	1557	6.9	82.6	1.5	4.0	1.5	1.8	0.5	1.0	0.2	89.5	1.5	9.0	0.094	0.524	19.643251	-88.400908
Felipe Carrillo Puerto	216.97	1	0	8010	27.1	69.1	0.8	1.4	0.7	0.4	0.1	0.4	0.0	96.2	0.8	3.0	0.078	0.518	19.584767	-88.058872

19 CARR: Ramal a Panabá

CLAVE: 31609

RUTA: MEX-295

AÑO: 2025

LUGAR	ESTACION				CLASIFICACION VEHICULAR EN PORCIENTO										COORDENADAS					
	KM	TE	SC	TDPA	M	A	B	C2	C3	T3S2	T3S3	T3S2R4	OTROS	A	B	C	K'	D	LATITUD	LONGITUD
T. C. Valladolid - Rio Lagartos	0.00	3	0	1679	30.1	65.2	1.3	2.1	0.8	0.3	0.1	0.1	0.0	95.3	1.3	3.4	0.075	0.500	21.194262	-88.170465
Panabá	18.00	1	0	1586	30.0	66.3	0.8	1.8	0.6	0.3	0.1	0.1	0.0	96.3	0.8	2.9	0.083	0.511	21.284533	-88.268671

YUCATÁN

20 CARR: Teya -Peto

CLAVE: 31042

RUTA: MEX-184

AÑO: 2025

LUGAR	ESTACION				CLASIFICACION VEHICULAR EN PORCIENTO													COORDENADAS		
	KM	TE	SC	TDPA	M	A	B	C2	C3	T3S2	T3S3	T3S2R4	OTROS	A	B	C	K'	D	LATITUD	LONGITUD
T. C. Mérida - Puerto Juárez	0.00																			
San Antonio Tehuizt	3.80	3	1	5855	10.0	79.3	1.4	3.0	2.4	1.7	0.8	0.8	0.6	89.3	1.4	9.3	0.092	0.722	20.887944	-89.507763
San Antonio Tehuizt	3.80	3	2	6189	9.7	79.2	1.4	3.2	2.8	1.9	0.6	0.9	0.3	88.9	1.4	9.7	0.130	0.722	20.888000	-89.507702
T. Izq. Acanceh	13.70	1	1	4446	6.8	83.6	1.4	2.6	1.6	1.8	0.7	1.2	0.3	90.4	1.4	8.2	0.106	0.637	20.816889	-89.471761
T. Izq. Acanceh	13.70	1	2	3863	6.9	83.5	1.5	2.7	1.5	1.8	0.7	1.3	0.1	90.4	1.5	8.1	0.103	0.637	20.816754	-89.471670
Tecoh	22.00	3	1	3564	9.1	78.6	2.0	4.1	1.9	2.3	0.5	1.1	0.4	87.7	2.0	10.3	0.090	0.648	20.711575	-89.476065
Tecoh	22.00	3	2	3492	8.9	79.2	1.7	3.9	2.0	2.0	0.6	1.1	0.6	88.1	1.7	10.2	0.118	0.648	20.711484	-89.475933
T. Der. Zona Arq. de Mayapan	37.65	1	1	2869	5.8	80.5	2.1	3.6	2.2	2.7	1.2	1.5	0.4	86.3	2.1	11.6	0.082	0.689	20.633603	-89.459106
T. Der. Zona Arq. de Mayapan	37.65	1	2	2827	5.9	79.4	2.3	3.8	2.3	2.9	1.6	1.5	0.3	85.3	2.3	12.4	0.124	0.689	20.633656	-89.458983
T. Izq. Teabo	69.05	1	1	2655	5.3	82.1	2.2	3.0	2.3	2.8	0.8	1.3	0.2	87.4	2.2	10.4	0.082	0.606	20.410532	-89.307322
T. Izq. Teabo	69.05	1	2	2699	5.1	81.9	2.4	3.1	2.4	2.8	0.8	1.3	0.2	87.0	2.4	10.6	0.095	0.606	20.410602	-89.307213
T. Izq. Tixmehuac	97.10	1	0	2796	4.4	76.5	3.4	4.5	3.1	3.2	1.9	2.7	0.3	80.9	3.4	15.7	0.075	0.550	20.233250	-89.129879
T. Izq. Tixmehuac	97.10	3	0	3006	4.2	81.4	2.7	3.4	2.0	2.6	1.2	2.1	0.4	85.6	2.7	11.7	0.088	0.517	20.224835	-89.118147
Peto	120.70	1	0	3276	10.0	76.1	2.7	3.4	2.6	2.2	0.8	1.9	0.3	86.1	2.7	11.2	0.088	0.505	20.123921	-88.950324

21 CARR: Tzucacab - Santa Rosa

CLAVE: 31017

RUTA: MEX

AÑO: 2025

LUGAR	ESTACION				CLASIFICACION VEHICULAR EN PORCIENTO													COORDENADAS		
	KM	TE	SC	TDPA	M	A	B	C2	C3	T3S2	T3S3	T3S2R4	OTROS	A	B	C	K'	D	LATITUD	LONGITUD
Tzucacab	0.00	3	0	1838	34.1	58.8	0.8	4.6	0.6	0.6	0.3	0.2	0.0	92.9	0.8	6.3	0.080	0.565	20.073604	-89.035861
T. C. Teya -Peto	11.30																			
Peto	16.00	3	0	2919	19.7	66.7	2.5	4.1	1.7	2.4	0.8	1.6	0.5	86.4	2.5	11.1	0.087	0.525	20.084048	-88.912011
Santa Rosa	34.50	1	0	2121	11.0	71.0	2.6	5.8	2.2	2.6	1.0	3.4	0.4	82.0	2.6	15.4	0.081	0.620	19.977666	-88.885546

22 CARR: Valladolid - Felipe Carrillo Puerto

CLAVE: 00010

RUTA: MEX-295

AÑO: 2025

LUGAR	ESTACION				CLASIFICACION VEHICULAR EN PORCIENTO													COORDENADAS		
	KM	TE	SC	TDPA	M	A	B	C2	C3	T3S2	T3S3	T3S2R4	OTROS	A	B	C	K'	D	LATITUD	LONGITUD
Valladolid	0.00	3	0	8364	31.7	61.5	0.7	3.4	0.6	1.2	0.1	0.2	0.6	93.2	0.7	6.1	0.072	0.516	20.673350	-88.204466
Chichimilá	6.90	3	0	3380	20.1	76.7	0.5	1.2	0.9	0.2	0.0	0.3	0.1	96.8	0.5	2.7	0.075	0.504	20.619998	-88.236640
Tekom	12.05	3	0	2254	19.2	77.1	0.8	1.5	0.5	0.3	0.0	0.5	0.1	96.3	0.8	2.9	0.078	0.537	20.589449	-88.265500
Tixcacalcupul	19.80	3	0	1170	15.1	76.9	1.4	4.4	0.8	0.3	0.1	0.7	0.3	92.0	1.4	6.6	0.092	0.519	20.520294	-88.270809
Lim. Edos. Term. Yuc. Ppia. Q. R.	46.00																			
Tepich	51.40	1	0	1072	21.3	72.9	0.5	1.4	2.3	0.4	0.2	0.5	0.5	94.2	0.5	5.3	0.097	0.558	20.247337	-88.255390
Tihosuco	65.00	1	0	1078	16.4	77.5	2.7	1.3	0.9	0.3	0.1	0.6	0.2	93.9	2.7	3.4	0.096	0.510	20.193024	-88.358590

YUCATÁN

22 CARR: Valladolid - Felipe Carrillo Puerto

CLAVE: 00010

RUTA: MEX-295

AÑO: 2025

LUGAR	ESTACION				CLASIFICACION VEHICULAR EN PORCIENTO										COORDENADAS					
	KM	TE	SC	TDPA	M	A	B	C2	C3	T3S2	T3S3	T3S2R4	OTROS	A	B	C	K'	D	LATITUD	LONGITUD
Tihosuco	65.00	3	0	1214	18.7	75.1	1.0	3.5	0.7	0.3	0.1	0.4	0.2	93.8	1.0	5.2	0.095	0.565	20.188862	-88.387930
T. Izq. San Felipe Berriozábal	99.00	1	0	754	13.3	81.6	2.2	0.8	1.0	0.3	0.2	0.6	0.0	94.9	2.2	2.9	0.107	0.593	19.962293	-88.241441
T. Izq. San Felipe Berriozábal	99.00	3	0	888	12.6	82.7	1.6	1.0	1.0	0.6	0.2	0.3	0.0	95.3	1.6	3.1	0.105	0.516	19.961952	-88.241096
Señor	116.50	1	0	1383	16.0	77.4	2.1	2.7	0.7	0.3	0.1	0.4	0.3	93.4	2.1	4.5	0.085	0.547	19.851272	-88.143786
Señor	116.50	3	0	1806	12.5	77.5	2.9	4.5	0.7	0.8	0.4	0.4	0.3	90.0	2.9	7.1	0.076	0.551	19.832585	-88.131602
Felipe Carrillo Puerto	147.70	1	0	2336	18.0	75.2	1.4	3.7	0.4	0.4	0.4	0.5	0.0	93.2	1.4	5.4	0.099	0.519	19.602483	-88.053571

23 CARR: Valladolid - Río Lagartos

CLAVE: 31035

RUTA: MEX-295

AÑO: 2025

LUGAR	ESTACION				CLASIFICACION VEHICULAR EN PORCIENTO										COORDENADAS					
	KM	TE	SC	TDPA	M	A	B	C2	C3	T3S2	T3S3	T3S2R4	OTROS	A	B	C	K'	D	LATITUD	LONGITUD
Valladolid	0.00	3	1	6178	17.9	73.4	1.9	2.5	1.5	1.3	0.4	0.8	0.3	91.3	1.9	6.8	0.095	0.573	20.729216	-88.202872
Valladolid	0.00	3	2	6109	18.0	73.2	1.8	2.8	1.5	1.2	0.4	0.8	0.3	91.2	1.8	7.0	0.082	0.573	20.729231	-88.202972
Temozón	12.70	3	0	4816	22.6	69.8	0.9	2.4	1.2	1.4	0.3	1.2	0.2	92.4	0.9	6.7	0.073	0.513	20.820262	-88.194716
Tizimín	51.80	1	0	3710	19.0	69.3	1.4	2.4	2.8	1.9	1.2	1.8	0.2	88.3	1.4	10.3	0.077	0.505	21.092280	-88.161386
Tizimín	51.80	3	0	3964	32.5	60.9	0.6	2.8	1.3	1.0	0.3	0.5	0.1	93.4	0.6	6.0	0.079	0.572	21.188470	-88.166721
T. Der. Dzonot Carretero	79.90	1	0	1722	24.3	59.4	1.9	6.2	2.4	2.2	0.6	2.5	0.5	83.7	1.9	14.4	0.093	0.509	21.365976	-88.143939
Río Lagartos	103.90																			

24 CARR: Mérida - Cancún (Cuota)

CLAVE: 00071

RUTA: MEX-180D

AÑO: 2025

LUGAR	ESTACION				CLASIFICACION VEHICULAR EN PORCIENTO										COORDENADAS					
	KM	TE	SC	TDPA	M	A	B	C2	C3	T3S2	T3S3	T3S2R4	OTROS	A	B	C	K'	D	LATITUD	LONGITUD
T. C. Mérida - Puerto Juárez	66.00	3	1	4899	2.4	72.1	5.2	5.0	2.8	4.7	1.7	4.9	1.2	74.5	5.2	20.3	0.076	0.539	20.802763	-89.044808
T. C. Mérida - Puerto Juárez	66.00	3	2	5196	2.8	71.3	5.5	5.2	2.9	5.2	1.2	4.9	1.0	74.1	5.5	20.4	0.084	0.539	20.803016	-89.044929
X. C. Kantunil - Izamal	68.00	3	1	3402	3.2	67.2	5.6	4.5	5.9	6.1	1.7	4.7	1.1	70.4	5.6	24.0	0.071	0.572	20.804632	-89.020461
X. C. Kantunil - Izamal	68.00	3	2	3011	2.8	68.1	5.5	4.3	5.5	5.8	1.6	5.1	1.3	70.9	5.5	23.6	0.085	0.572	20.804881	-89.020385
Plaza de Cobro Piste	115.34	1	1	2928	2.1	71.5	4.5	3.6	2.3	5.6	1.5	8.1	0.8	73.6	4.5	21.9	0.087	0.530	20.732628	-88.599203
Plaza de Cobro Piste	115.34	1	2	3075	2.4	70.7	4.8	3.7	1.9	5.6	1.6	8.3	1.0	73.1	4.8	22.1	0.082	0.530	20.732712	-88.599210
X. C. Valladolid - Río Lagartos	155.65	1	1	2867	2.7	68.3	4.8	4.2	5.6	5.1	1.4	6.8	1.1	71.0	4.8	24.2	0.095	0.502	20.745389	-88.251015
X. C. Valladolid - Río Lagartos	155.65	1	2	2881	2.5	68.6	4.6	3.7	5.7	5.3	1.5	6.9	1.2	71.1	4.6	24.3	0.102	0.502	20.745475	-88.250964
Estación Fitosanitaria X-Can	216.70	3	1	2819	2.7	64.6	6.3	6.7	5.6	5.2	2.1	5.9	0.9	67.3	6.3	26.4	0.095	0.646	20.880206	-87.596304
Estación Fitosanitaria X-Can	216.70	3	2	2758	2.7	65.0	6.3	6.6	5.6	5.0	2.1	5.9	0.8	67.7	6.3	26.0	0.074	0.646	20.880285	-87.596312
Lim. Edos. Term. Yuc. Ppia. Q. R.	219.80																			
X. C. El Cedral - Playa del Carmen	237.20	3	1	2217	6.5	65.0	5.3	4.7	7.4	4.2	0.4	5.6	0.9	71.5	5.3	23.2	0.105	0.588	20.923785	-87.368970

YUCATÁN

24 CARR: Mérida - Cancún (Cuota)

CLAVE: 00071

RUTA: MEX-180D

AÑO: 2025

LUGAR	ESTACION				CLASIFICACION VEHICULAR EN PORCIENTO										COORDENADAS					
	KM	TE	SC	TDPA	M	A	B	C2	C3	T3S2	T3S3	T3S2R4	OTROS	A	B	C	K'	D	LATITUD	LONGITUD
X. C. El Cedral - Playa del Carmen	237.20	3	2	2077	6.2	65.2	5.4	4.6	7.6	4.0	0.4	5.7	0.9	71.4	5.4	23.2	0.098	0.588	20.923868	-87.369010
T. C. Mérida - Puerto Juárez	292.00	1	1	3331	8.4	68.5	5.3	3.4	3.1	4.2	1.7	4.5	0.9	76.9	5.3	17.8	0.089	0.518	21.096178	-86.978256
T. C. Mérida - Puerto Juárez	292.00	1	2	3031	8.6	69.1	4.8	3.8	3.0	4.0	1.5	4.2	1.0	77.7	4.8	17.5	0.084	0.518	21.096452	-86.978346
T. Av. Huayacán	300.80	2	0	21653	6.9	77.9	3.7	4.3	3.2	1.7	0.6	1.4	0.3	84.8	3.7	11.5	0.072	0.788	21.053850	-86.910602
T. C. Reforma Agraria - Puerto Juárez	307.80	1	0	27029	4.9	85.2	1.9	3.7	1.5	1.1	0.4	1.0	0.3	90.1	1.9	8.0	0.079	0.733	21.021559	-86.860433

25 CARR: Acanceh - Estación Polabán

CLAVE: 31615

RUTA: YUC

AÑO: 2025

LUGAR	ESTACION				CLASIFICACION VEHICULAR EN PORCIENTO										COORDENADAS					
	KM	TE	SC	TDPA	M	A	B	C2	C3	T3S2	T3S3	T3S2R4	OTROS	A	B	C	K'	D	LATITUD	LONGITUD
Acanceh	0.00	3	0	2687	34.4	56.4	2.3	3.9	1.2	0.6	0.3	0.7	0.2	90.8	2.3	6.9	0.086	0.522	20.808853	-89.439927
Homún	20.00	3	0	1646	58.3	37.1	0.5	3.5	0.2	0.2	0.1	0.1	0.0	95.4	0.5	4.1	0.170	0.609	20.734538	-89.266116
Estación Polabán	24.40	1	0	794	53.8	39.7	0.7	4.9	0.6	0.2	0.1	0.0	0.0	93.5	0.7	5.8	0.115	0.505	20.726808	-89.224790

26 CARR: Baca - Dzidzantún

CLAVE: 31591

RUTA: YUC

AÑO: 2025

LUGAR	ESTACION				CLASIFICACION VEHICULAR EN PORCIENTO										COORDENADAS					
	KM	TE	SC	TDPA	M	A	B	C2	C3	T3S2	T3S3	T3S2R4	OTROS	A	B	C	K'	D	LATITUD	LONGITUD
Baca	0.00	3	0	2087	42.1	53.0	0.4	2.2	0.9	0.6	0.4	0.1	0.3	95.1	0.4	4.5	0.092	0.622	21.122512	-89.393957
Dzemul	15.00	1	0	410	11.0	82.6	0.7	3.8	1.4	0.2	0.2	0.0	0.1	93.6	0.7	5.7	0.129	0.509	21.205002	-89.319426
Dzemul	15.00	3	0	3128	33.8	61.3	0.3	2.7	0.7	0.9	0.1	0.1	0.1	95.1	0.3	4.6	0.078	0.533	21.208774	-89.296146
Pueblo Telchac	19.10	3	0	1656	37.4	59.5	0.3	2.2	0.5	0.1	0.0	0.0	0.0	96.9	0.3	2.8	0.075	0.520	21.202934	-89.255675
Sinanché	29.10	3	0	947	32.6	59.1	0.5	5.6	1.1	0.5	0.1	0.2	0.3	91.7	0.5	7.8	0.090	0.588	21.225940	-89.174560
Dzidzantún	43.00	1	0	1281	39.2	52.9	0.6	5.2	0.9	0.7	0.3	0.0	0.2	92.1	0.6	7.3	0.087	0.509	21.244614	-89.055524

27 CARR: Calotmul - Sucilá

CLAVE: 31617

RUTA: YUC

AÑO: 2025

LUGAR	ESTACION				CLASIFICACION VEHICULAR EN PORCIENTO										COORDENADAS					
	KM	TE	SC	TDPA	M	A	B	C2	C3	T3S2	T3S3	T3S2R4	OTROS	A	B	C	K'	D	LATITUD	LONGITUD
Calotmul	0.00	3	0	944	35.0	60.2	0.5	3.0	0.9	0.1	0.2	0.1	0.0	95.2	0.5	4.3	0.087	0.585	21.017743	-88.186168
X. C. Cansahcab - Tizimin	30.00	1	0	1463	17.2	75.5	1.1	4.7	0.9	0.1	0.2	0.2	0.1	92.7	1.1	6.2	0.102	0.658	21.138030	-88.313576
Sucilá	30.70																			

YUCATÁN

28 CARR: Citilcum - Tixkochoh

CLAVE: 31064

RUTA: YUC

AÑO: 2025

LUGAR	ESTACION				CLASIFICACION VEHICULAR EN PORCIENTO													COORDENADAS		
	KM	TE	SC	TDPA	M	A	B	C2	C3	T3S2	T3S3	T3S2R4	OTROS	A	B	C	K'	D	LATITUD	LONGITUD
Citilcum	0.00	3	0	1306	41.7	54.6	0.7	1.6	0.7	0.6	0.1	0.0	0.0	96.3	0.7	3.0	0.073	0.526	20.959106	-89.115332
Tekanto	7.00	1	0	1147	40.4	56.6	0.8	1.1	0.8	0.2	0.1	0.0	0.0	97.0	0.8	2.2	0.086	0.515	20.999969	-89.105239
Tixkochoh	10.00	1	0	880	30.6	67.8	0.4	0.7	0.3	0.2	0.0	0.0	0.0	98.4	0.4	1.2	0.072	0.635	21.013877	-89.088513

29 CARR: Dzemul - Xtampú

CLAVE: 31608

RUTA: YUC

AÑO: 2025

LUGAR	ESTACION				CLASIFICACION VEHICULAR EN PORCIENTO													COORDENADAS		
	KM	TE	SC	TDPA	M	A	B	C2	C3	T3S2	T3S3	T3S2R4	OTROS	A	B	C	K'	D	LATITUD	LONGITUD
Dzemul	0.00	3	0	644	27.0	68.5	0.6	2.7	0.9	0.1	0.1	0.1	0.0	95.5	0.6	3.9	0.121	0.859	21.212632	-89.321309
Xtampú	10.00	1	0	937	28.4	68.8	0.3	1.8	0.6	0.1	0.0	0.0	0.0	97.2	0.3	2.5	0.100	0.809	21.331594	-89.348644

30 CARR: Dzidzantún - Santa Clara

CLAVE: 31592

RUTA: YUC

AÑO: 2025

LUGAR	ESTACION				CLASIFICACION VEHICULAR EN PORCIENTO													COORDENADAS		
	KM	TE	SC	TDPA	M	A	B	C2	C3	T3S2	T3S3	T3S2R4	OTROS	A	B	C	K'	D	LATITUD	LONGITUD
Dzidzantún	0.00	3	0	1466	47.7	48.8	0.5	0.9	1.4	0.4	0.1	0.1	0.1	96.5	0.5	3.0	0.080	0.805	21.258533	-89.041531
Santa Clara	14.00	1	0	925	35.2	63.4	0.3	0.4	0.5	0.2	0.0	0.0	0.0	98.6	0.3	1.1	0.093	0.523	21.370943	-89.014433

31 CARR: Hoctún - Cenotillo

CLAVE: 31011

RUTA: YUC-011

AÑO: 2025

LUGAR	ESTACION				CLASIFICACION VEHICULAR EN PORCIENTO													COORDENADAS		
	KM	TE	SC	TDPA	M	A	B	C2	C3	T3S2	T3S3	T3S2R4	OTROS	A	B	C	K'	D	LATITUD	LONGITUD
Hoctún	0.00	3	0	3571	10.2	79.4	1.6	4.1	2.3	1.2	0.6	0.6	0.0	89.6	1.6	8.8	0.086	0.532	20.880864	-89.188005
Citilcum	13.20	3	0	2215	32.7	60.7	0.7	4.8	0.7	0.2	0.0	0.2	0.0	93.4	0.7	5.9	0.093	0.626	20.950790	-89.110652
Izamal	24.00	3	0	3324	40.8	51.5	0.5	3.2	3.2	0.5	0.2	0.1	0.0	92.3	0.5	7.2	0.082	0.513	20.934005	-89.000278
Tunkás	55.20	3	0	732	42.6	53.3	0.5	2.3	0.6	0.4	0.2	0.1	0.0	95.9	0.5	3.6	0.086	0.540	20.916010	-88.735546
Cenotillo	70.90	1	0	696	40.5	55.5	0.7	2.5	0.6	0.1	0.1	0.0	0.0	96.0	0.7	3.3	0.095	0.500	20.961716	-88.630768

32 CARR: Holcá - Sotuta

CLAVE: 31626

RUTA: YUC

AÑO: 2025

LUGAR	ESTACION				CLASIFICACION VEHICULAR EN PORCIENTO													COORDENADAS		
	KM	TE	SC	TDPA	M	A	B	C2	C3	T3S2	T3S3	T3S2R4	OTROS	A	B	C	K'	D	LATITUD	LONGITUD
T. C. Mérida - Puerto Juárez	0.00	3	0	984	20.6	73.0	1.1	2.2	1.9	0.6	0.2	0.4	0.0	93.6	1.1	5.3	0.101	0.646	20.750687	-88.930466
Tibolón	10.00	3	0	946	18.0	72.6	1.5	4.7	1.2	0.9	0.5	0.6	0.0	90.6	1.5	7.9	0.097	0.565	20.659874	-88.949787
Sotuta	20.00	1	0	1076	27.5	65.6	1.0	2.5	1.7	0.8	0.3	0.6	0.0	93.1	1.0	5.9	0.092	0.636	20.606175	-89.003200

YUCATÁN

33 CARR: Hunucmá - Umán

CLAVE: 31610

RUTA: YUC

AÑO: 2025

LUGAR	ESTACION				CLASIFICACION VEHICULAR EN PORCIENTO													COORDENADAS		
	KM	TE	SC	TDPA	M	A	B	C2	C3	T3S2	T3S3	T3S2R4	OTROS	A	B	C	K'	D	LATITUD	LONGITUD
Hunucmá	0.00	3	0	7547	13.3	77.0	1.3	7.1	0.5	0.4	0.1	0.3	0.0	90.3	1.3	8.4	0.082	0.568	21.003242	-89.862866
X. C. Mérida - Tetiz	4.87	1	0	6647	13.1	76.2	1.2	7.2	1.0	0.9	0.1	0.3	0.0	89.3	1.2	9.5	0.078	0.536	20.982696	-89.854794
X. C. Mérida - Tetiz	4.87	3	0	1563	31.2	60.8	1.0	4.9	0.7	1.1	0.3	0.0	0.0	92.0	1.0	7.0	0.081	0.532	20.975599	-89.852151
Hacienda Dzibikak	16.16	1	0	1762	23.6	68.2	1.1	3.7	1.9	1.2	0.3	0.0	0.0	91.8	1.1	7.1	0.096	0.527	20.905461	-89.798022
Hacienda Dzibikak	16.16	3	0	3333	48.6	43.6	1.4	3.7	1.1	0.8	0.5	0.3	0.0	92.2	1.4	6.4	0.092	0.614	20.902226	-89.786167
Umán	22.00	1	0	4579	50.7	41.8	1.4	2.4	1.5	1.4	0.2	0.5	0.1	92.5	1.4	6.1	0.104	0.600	20.895446	-89.765768

34 CARR: Izamal - Dzilam González

CLAVE: 31605

RUTA: YUC

AÑO: 2025

LUGAR	ESTACION				CLASIFICACION VEHICULAR EN PORCIENTO													COORDENADAS		
	KM	TE	SC	TDPA	M	A	B	C2	C3	T3S2	T3S3	T3S2R4	OTROS	A	B	C	K'	D	LATITUD	LONGITUD
Izamal	0.00	3	0	2501	51.0	46.3	0.8	0.8	0.6	0.2	0.1	0.2	0.0	97.3	0.8	1.9	0.076	0.513	20.945094	-89.006228
Temax	30.00	1	0	1046	32.0	61.8	1.8	2.5	1.1	0.4	0.1	0.3	0.0	93.8	1.8	4.4	0.102	0.533	21.132504	-88.938836
Dzilam González	43.00	1	0	1310	30.3	62.5	1.7	4.5	0.8	0.1	0.0	0.1	0.0	92.8	1.7	5.5	0.085	0.527	21.272249	-88.930936

35 CARR: Kantunil - Izamal

CLAVE: 31012

RUTA: YUC

AÑO: 2025

LUGAR	ESTACION				CLASIFICACION VEHICULAR EN PORCIENTO													COORDENADAS		
	KM	TE	SC	TDPA	M	A	B	C2	C3	T3S2	T3S3	T3S2R4	OTROS	A	B	C	K'	D	LATITUD	LONGITUD
Kantunil	0.00	3	0	1296	19.6	71.6	0.9	5.8	0.8	1.0	0.3	0.0	0.0	91.2	0.9	7.9	0.130	0.568	20.811339	-89.026140
Izamal	17.80	1	0	2822	42.7	49.5	0.8	1.9	4.6	0.3	0.1	0.1	0.0	92.2	0.8	7.0	0.099	0.548	20.918953	-89.012699

36 CARR: Kinchil - Umán

CLAVE: 31009

RUTA: YUC

AÑO: 2025

LUGAR	ESTACION				CLASIFICACION VEHICULAR EN PORCIENTO													COORDENADAS		
	KM	TE	SC	TDPA	M	A	B	C2	C3	T3S2	T3S3	T3S2R4	OTROS	A	B	C	K'	D	LATITUD	LONGITUD
Kinchil	0.00	3	0	2384	40.1	49.3	2.6	5.9	0.7	1.1	0.1	0.2	0.0	89.4	2.6	8.0	0.093	0.765	20.911598	-89.938124
Umán	26.00																			

37 CARR: Libramiento de Peto

CLAVE:

RUTA: YUC-018

AÑO: 2025

LUGAR	ESTACION				CLASIFICACION VEHICULAR EN PORCIENTO													COORDENADAS		
	KM	TE	SC	TDPA	M	A	B	C2	C3	T3S2	T3S3	T3S2R4	OTROS	A	B	C	K'	D	LATITUD	LONGITUD
T. C. Teya - Peto	0.00	3	0	1492	7.2	70.3	3.2	5.2	2.9	3.0	2.6	4.9	0.7	77.5	3.2	19.3	0.091	0.544	20.113690	-88.944440
T. C. Tzucacab - Santa Rosa	5.60																			

YUCATÁN

38 CARR: Libramiento Norte de Motul

CLAVE: 31610

RUTA: YUC

AÑO: 2025

LUGAR	ESTACION				CLASIFICACION VEHICULAR EN PORCIENTO													COORDENADAS		
	KM	TE	SC	TDPA	M	A	B	C2	C3	T3S2	T3S3	T3S2R4	OTROS	A	B	C	K'	D	LATITUD	LONGITUD
T. C. Mérida - Dzilam de Bravo Poniente	0.00	3	0	9548	9.6	79.3	0.8	6.0	1.5	1.5	0.5	0.6	0.2	88.9	0.8	10.3	0.079	0.604	21.101313	-89.301305
X. C. Motul - Puerto Telchac	3.16	1	0	9710	12.4	76.8	0.8	5.7	1.3	1.7	0.6	0.5	0.2	89.2	0.8	10.0	0.079	0.530	21.114446	-89.284023
X. C. Motul - Puerto Telchac	3.16	3	0	7895	12.8	74.7	0.8	7.7	1.0	1.8	0.6	0.4	0.2	87.5	0.8	11.7	0.075	0.606	21.114492	-89.278899
X. C. Libramiento Suma de Hidalgo	3.70	3	0	1991	26.6	67.4	1.7	2.5	1.1	0.4	0.1	0.2	0.0	94.0	1.7	4.3	0.099	0.641	21.111767	-89.273318
T. C. Mérida - Dzilam de Bravo Oriente	6.53	1	0	1406	37.2	57.9	0.6	2.4	1.1	0.4	0.2	0.2	0.0	95.1	0.6	4.3	0.088	0.685	21.096759	-89.260973

39 CARR: Mérida - Acanceh

CLAVE: 31023

RUTA: YUC

AÑO: 2025

LUGAR	ESTACION				CLASIFICACION VEHICULAR EN PORCIENTO													COORDENADAS		
	KM	TE	SC	TDPA	M	A	B	C2	C3	T3S2	T3S3	T3S2R4	OTROS	A	B	C	K'	D	LATITUD	LONGITUD
Mérida	0.00	3	0	11906	24.6	68.7	0.9	2.8	1.7	0.5	0.3	0.5	0.0	93.3	0.9	5.8	0.074	0.564	20.935172	-89.580036
T. Der. Uxec Tamán	11.00	1	0	991	30.9	66.6	0.8	1.1	0.6	0.0	0.0	0.0	0.0	97.5	0.8	1.7	0.084	0.590	20.877532	-89.528129
T. Der. Uxec Tamán	11.00	3	0	847	23.0	66.1	1.1	9.1	0.6	0.1	0.0	0.0	0.0	89.1	1.1	9.8	0.112	0.737	20.861200	-89.530750
Timucuy	20.00	3	0	1465	33.3	61.8	0.9	3.4	0.6	0.0	0.0	0.0	0.0	95.1	0.9	4.0	0.082	0.517	20.812492	-89.503012
Acanceh	26.00	1	0	1404	37.0	58.2	0.7	3.5	0.3	0.3	0.0	0.0	0.0	95.2	0.7	4.1	0.095	0.515	20.812604	-89.474609

40 CARR: Mérida - Oxkutzcab

CLAVE: 31018

RUTA: YUC-018

AÑO: 2025

LUGAR	ESTACION				CLASIFICACION VEHICULAR EN PORCIENTO													COORDENADAS		
	KM	TE	SC	TDPA	M	A	B	C2	C3	T3S2	T3S3	T3S2R4	OTROS	A	B	C	K'	D	LATITUD	LONGITUD
Mérida	0.00	3	1	13162	19.5	72.6	0.6	6.4	0.4	0.2	0.1	0.2	0.0	92.1	0.6	7.3	0.071	0.508	20.944893	-89.582685
Mérida	0.00	3	2	12709	20.0	72.4	0.5	6.2	0.3	0.3	0.1	0.2	0.0	92.4	0.5	7.1	0.079	0.508	20.944994	-89.582693
Kanasín	5.97	1	1	11993	18.6	75.6	0.5	4.8	0.3	0.2	0.0	0.0	0.0	94.2	0.5	5.3	0.083	0.539	20.940915	-89.571633
Kanasín	5.97	1	2	11704	18.4	75.5	0.6	4.9	0.4	0.2	0.0	0.0	0.0	93.9	0.6	5.5	0.084	0.539	20.940998	-89.571594
Acanceh	20.39	1	0	6637	29.6	60.4	0.9	4.0	1.0	1.8	0.7	1.0	0.6	90.0	0.9	9.1	0.108	0.583	20.823058	-89.466195
Acanceh	20.39	3	1	4443	12.0	76.7	1.9	3.5	1.8	2.1	0.6	1.2	0.2	88.7	1.9	9.4	0.095	0.563	20.790060	-89.460297
Acanceh	20.39	3	2	4725	12.0	76.4	1.9	3.6	1.9	2.2	0.7	1.2	0.1	88.4	1.9	9.7	0.119	0.563	20.790318	-89.460072
T. Der. Tecoh	26.64	3	1	3370	5.4	83.2	2.0	2.5	2.0	2.3	0.9	1.4	0.3	88.6	2.0	9.4	0.077	0.682	20.751524	-89.463899
T. Der. Tecoh	26.64	3	2	2930	5.3	82.9	2.0	2.6	2.1	2.3	1.1	1.5	0.2	88.2	2.0	9.8	0.110	0.682	20.751524	-89.463809
Tekit	61.70	1	0	472	21.0	76.4	0.3	1.8	0.3	0.1	0.1	0.0	0.0	97.4	0.3	2.3	0.136	0.594	20.543349	-89.337708
Tekit	61.70	3	1	3093	4.9	81.2	1.9	4.7	1.9	2.8	0.7	1.5	0.4	86.1	1.9	12.0	0.083	0.574	20.514579	-89.346695
Tekit	61.70	3	2	2921	5.1	81.4	2.1	4.3	2.0	2.8	0.7	1.3	0.3	86.5	2.1	11.4	0.073	0.574	20.514508	-89.346599
Maní	98.20	1	0	4459	21.3	70.9	1.4	2.3	1.3	1.6	0.8	0.3	0.1	92.2	1.4	6.4	0.083	0.547	20.399515	-89.360793
Maní	98.20	3	0	2408	35.5	57.6	0.3	5.1	0.3	1.0	0.1	0.1	0.0	93.1	0.3	6.6	0.088	0.613	20.371980	-89.398782
Oxkutzcab	109.30	1	0	2442	30.2	63.4	0.2	4.5	0.3	1.2	0.1	0.1	0.0	93.6	0.2	6.2	0.085	0.577	20.328273	-89.416766

YUCATÁN

41 CARR: Mérida - Timucuy

CLAVE: 31024

RUTA: YUC

AÑO: 2025

LUGAR	ESTACION				CLASIFICACION VEHICULAR EN PORCIENTO													COORDENADAS		
	KM	TE	SC	TDPA	M	A	B	C2	C3	T3S2	T3S3	T3S2R4	OTROS	A	B	C	K'	D	LATITUD	LONGITUD
Mérida	0.00	3	0	8685	23.2	69.0	1.0	4.1	1.1	0.7	0.4	0.3	0.2	92.2	1.0	6.8	0.092	0.662	20.898495	-89.599379
Tekik de Regil	15.10	1	0	2249	25.2	67.2	0.8	5.4	0.5	0.4	0.2	0.2	0.1	92.4	0.8	6.8	0.115	0.539	20.823864	-89.559436
Tekik de Regil	15.10	3	0	1739	30.8	62.0	0.7	5.6	0.3	0.3	0.2	0.1	0.0	92.8	0.7	6.5	0.104	0.785	20.815873	-89.555591
Timucuy	18.65	1	0	1574	30.9	61.5	0.8	5.8	0.5	0.3	0.1	0.1	0.0	92.4	0.8	6.8	0.099	0.692	20.813021	-89.529464

42 CARR: Motul - Puerto Telchac

CLAVE: 31006

RUTA: YUC-172

AÑO: 2025

LUGAR	ESTACION				CLASIFICACION VEHICULAR EN PORCIENTO													COORDENADAS		
	KM	TE	SC	TDPA	M	A	B	C2	C3	T3S2	T3S3	T3S2R4	OTROS	A	B	C	K'	D	LATITUD	LONGITUD
Motul	0.00	3	0	4546	31.1	65.9	0.4	1.6	0.7	0.1	0.1	0.1	0.0	97.0	0.4	2.6	0.082	0.573	21.120730	-89.280734
Pueblo Telchac	12.00	3	0	3168	32.4	65.2	0.3	1.4	0.4	0.1	0.1	0.1	0.0	97.6	0.3	2.1	0.080	0.682	21.215352	-89.271406
Puerto Telchac	28.00																			

43 CARR: Muna - Maxcanú

CLAVE: 31053

RUTA: YUC

AÑO: 2025

LUGAR	ESTACION				CLASIFICACION VEHICULAR EN PORCIENTO													COORDENADAS		
	KM	TE	SC	TDPA	M	A	B	C2	C3	T3S2	T3S3	T3S2R4	OTROS	A	B	C	K'	D	LATITUD	LONGITUD
Muna	0.00	3	0	1476	23.2	62.8	2.1	5.4	2.3	2.2	0.9	0.9	0.2	86.0	2.1	11.9	0.085	0.611	20.491151	-89.736689
Opichén	17.00	3	0	1944	20.0	69.3	1.9	5.0	1.3	1.5	0.4	0.3	0.3	89.3	1.9	8.8	0.094	0.571	20.554785	-89.869111
T. C. Campeche - Mérida	31.00	1	0	1762	20.0	68.0	1.5	6.8	1.9	1.1	0.4	0.3	0.0	88.0	1.5	10.5	0.114	0.605	20.581552	-89.963679

44 CARR: Oxkutzcab - Xul

CLAVE: 31051

RUTA: YUC-031

AÑO: 2025

LUGAR	ESTACION				CLASIFICACION VEHICULAR EN PORCIENTO													COORDENADAS		
	KM	TE	SC	TDPA	M	A	B	C2	C3	T3S2	T3S3	T3S2R4	OTROS	A	B	C	K'	D	LATITUD	LONGITUD
Oxkutzcab	0.00	3	0	3315	35.6	59.8	0.2	2.8	0.2	0.8	0.1	0.3	0.2	95.4	0.2	4.4	0.102	0.690	20.284713	-89.426159
Emiliano Zapata	10.00	3	0	1302	48.0	43.1	0.6	7.2	0.4	0.3	0.2	0.1	0.1	91.1	0.6	8.3	0.092	0.517	20.215070	-89.463772
Xul	25.00	1	0	1305	41.7	49.5	1.0	6.7	0.7	0.3	0.1	0.0	0.0	91.2	1.0	7.8	0.098	0.570	20.107655	-89.458165

45 CARR: Piste - Dzitás

CLAVE: 31013

RUTA: YUC-013

AÑO: 2025

LUGAR	ESTACION				CLASIFICACION VEHICULAR EN PORCIENTO													COORDENADAS		
	KM	TE	SC	TDPA	M	A	B	C2	C3	T3S2	T3S3	T3S2R4	OTROS	A	B	C	K'	D	LATITUD	LONGITUD
Piste	0.00	3	0	3050	8.6	83.9	1.6	3.4	0.9	1.1	0.3	0.2	0.0	92.5	1.6	5.9	0.095	0.659	20.708775	-88.586005
Dzitás	18.00	1	0	748	9.3	86.1	0.7	2.0	0.9	0.3	0.4	0.3	0.0	95.4	0.7	3.9	0.115	0.674	20.828810	-88.540909

YUCATÁN

46 CARR: Progreso - Telchac Puerto

CLAVE: 31616

RUTA: YUC-027

AÑO: 2025

LUGAR	ESTACION				CLASIFICACION VEHICULAR EN PORCIENTO													COORDENADAS		
	KM	TE	SC	TDPA	M	A	B	C2	C3	T3S2	T3S3	T3S2R4	OTROS	A	B	C	K'	D	LATITUD	LONGITUD
Progreso	0.00	3	1	6132	8.2	85.8	0.5	3.3	1.1	0.5	0.2	0.3	0.1	94.0	0.5	5.5	0.115	0.648	21.276755	-89.654673
Progreso	0.00	3	2	6064	8.5	86.1	0.3	3.5	0.6	0.6	0.1	0.2	0.1	94.6	0.3	5.1	0.095	0.648	21.276843	-89.654700
Chicxulub Puerto	6.30	1	1	4535	9.8	86.4	0.6	1.6	1.1	0.2	0.1	0.2	0.0	96.2	0.6	3.2	0.083	0.502	21.288374	-89.608941
Chicxulub Puerto	6.30	1	2	5270	9.5	86.9	0.5	1.3	0.8	0.3	0.4	0.3	0.0	96.4	0.5	3.1	0.082	0.502	21.288460	-89.608920
Chicxulub Puerto	6.30	3	0	9774	7.2	86.6	0.8	2.9	1.0	0.9	0.3	0.1	0.2	93.8	0.8	5.4	0.104	0.612	21.297510	-89.571700
Xtampú	33.40	1	0	1827	11.1	80.5	0.4	4.5	1.3	1.4	0.5	0.1	0.2	91.6	0.4	8.0	0.113	0.560	21.332615	-89.352608
Xtampú	33.40	3	0	1881	9.9	82.3	0.6	4.0	1.4	1.2	0.5	0.1	0.0	92.2	0.6	7.2	0.129	0.537	21.333980	-89.343117
Telchac Puerto	41.50	1	0	3002	18.8	76.6	0.4	2.4	0.6	0.9	0.1	0.1	0.1	95.4	0.4	4.2	0.109	0.527	21.340146	-89.291635

47 CARR: Ramal a Chankom

CLAVE: 31049

RUTA: YUC

AÑO: 2025

LUGAR	ESTACION				CLASIFICACION VEHICULAR EN PORCIENTO													COORDENADAS		
	KM	TE	SC	TDPA	M	A	B	C2	C3	T3S2	T3S3	T3S2R4	OTROS	A	B	C	K'	D	LATITUD	LONGITUD
T. C. Mérida - Puerto Juárez	0.00	3	0	546	23.4	71.3	0.5	3.7	0.7	0.4	0.0	0.0	0.0	94.7	0.5	4.8	0.097	0.717	20.640162	-88.489177
Chankom	9.00	1	0	548	20.1	76.2	0.9	2.0	0.7	0.0	0.1	0.0	0.0	96.3	0.9	2.8	0.093	0.510	20.584457	-88.507297

48 CARR: Ramal a Dzonot Carretero

CLAVE: 31614

RUTA: YUC

AÑO: 2025

LUGAR	ESTACION				CLASIFICACION VEHICULAR EN PORCIENTO													COORDENADAS		
	KM	TE	SC	TDPA	M	A	B	C2	C3	T3S2	T3S3	T3S2R4	OTROS	A	B	C	K'	D	LATITUD	LONGITUD
T. C. Valladolid - Río Lagartos	0.00	3	0	651	39.4	56.1	1.2	2.2	0.6	0.3	0.1	0.1	0.0	95.5	1.2	3.3	0.098	0.719	21.378144	-88.136837
Dzonot Carretero	35.00																			

49 CARR: Ramal a San Felipe

CLAVE: 31628

RUTA: YUC

AÑO: 2025

LUGAR	ESTACION				CLASIFICACION VEHICULAR EN PORCIENTO													COORDENADAS		
	KM	TE	SC	TDPA	M	A	B	C2	C3	T3S2	T3S3	T3S2R4	OTROS	A	B	C	K'	D	LATITUD	LONGITUD
T. C. Valladolid - Río Lagartos	0.00	3	0	567	25.4	68.6	1.4	2.0	2.0	0.3	0.2	0.1	0.0	94.0	1.4	4.6	0.097	0.600	21.572278	-88.162543
San Felipe	7.20	1	0	636	27.0	67.7	0.7	2.6	1.1	0.5	0.3	0.1	0.0	94.7	0.7	4.6	0.085	0.537	21.552699	-88.230462

50 CARR: Ramal a Tedzidz

CLAVE: 31600

RUTA: YUC

AÑO: 2025

LUGAR	ESTACION				CLASIFICACION VEHICULAR EN PORCIENTO													COORDENADAS		
	KM	TE	SC	TDPA	M	A	B	C2	C3	T3S2	T3S3	T3S2R4	OTROS	A	B	C	K'	D	LATITUD	LONGITUD
T. C. Mérida - Celestún	0.00																			

YUCATÁN

50 CARR: Ramal a Tedzidz

CLAVE: 31600

RUTA: YUC

AÑO: 2025

LUGAR	ESTACION				CLASIFICACION VEHICULAR EN PORCIENTO														COORDENADAS	
	KM	TE	SC	TDPA	M	A	B	C2	C3	T3S2	T3S3	T3S2R4	OTROS	A	B	C	K'	D	LATITUD	LONGITUD
Tedzidz	6.00	1	0	191	44.8	50.2	1.0	2.2	0.7	0.4	0.3	0.4	0.0	95.0	1.0	4.0	0.110	0.571	20.842805	-89.975018

51 CARR: Ramal a Yaxcabá

CLAVE: 31111

RUTA: YUC-289

AÑO: 2025

LUGAR	ESTACION				CLASIFICACION VEHICULAR EN PORCIENTO														COORDENADAS	
	KM	TE	SC	TDPA	M	A	B	C2	C3	T3S2	T3S3	T3S2R4	OTROS	A	B	C	K'	D	LATITUD	LONGITUD
T. C. Mérida - Puerto Juárez	0.00	3	0	840	20.6	73.0	0.4	2.2	0.9	1.8	0.3	0.8	0.0	93.6	0.4	6.0	0.131	0.500	20.696817	-88.811512
Yaxcabá	18.00	1	0	928	22.7	68.7	0.9	2.5	1.7	1.8	0.6	1.1	0.0	91.4	0.9	7.7	0.115	0.579	20.567506	-88.823188

52 CARR: Sinanché - Xitibcanul

CLAVE: 31619

RUTA: YUC

AÑO: 2025

LUGAR	ESTACION				CLASIFICACION VEHICULAR EN PORCIENTO														COORDENADAS	
	KM	TE	SC	TDPA	M	A	B	C2	C3	T3S2	T3S3	T3S2R4	OTROS	A	B	C	K'	D	LATITUD	LONGITUD
Sinanché	0.00	3	0	832	34.6	64.1	0.2	0.4	0.4	0.1	0.1	0.1	0.0	98.7	0.2	1.1	0.109	0.945	21.234339	-89.184421
Xitibcanul	7.00	1	0	713	47.7	47.5	1.1	2.3	0.9	0.5	0.0	0.0	0.0	95.2	1.1	3.7	0.095	0.794	21.351049	-89.172011

53 CARR: Suma - Izamal

CLAVE: 31081

RUTA: YUC-081

AÑO: 2025

LUGAR	ESTACION				CLASIFICACION VEHICULAR EN PORCIENTO														COORDENADAS	
	KM	TE	SC	TDPA	M	A	B	C2	C3	T3S2	T3S3	T3S2R4	OTROS	A	B	C	K'	D	LATITUD	LONGITUD
Suma	0.00	3	0	915	33.4	61.6	0.9	2.9	0.6	0.4	0.1	0.1	0.0	95.0	0.9	4.1	0.119	0.560	21.082856	-89.139364
Izamal	22.00	1	0	993	37.6	54.7	0.5	6.0	0.9	0.3	0.0	0.0	0.0	92.3	0.5	7.2	0.098	0.577	20.949788	-89.020614

54 CARR: Telchac Puerto - Dzilam de Bravo

CLAVE: 31042

RUTA: YUC

AÑO: 2025

LUGAR	ESTACION				CLASIFICACION VEHICULAR EN PORCIENTO														COORDENADAS	
	KM	TE	SC	TDPA	M	A	B	C2	C3	T3S2	T3S3	T3S2R4	OTROS	A	B	C	K'	D	LATITUD	LONGITUD
Telchac Puerto	0.00	3	0	2127	17.9	78.3	0.5	2.5	0.7	0.1	0.0	0.0	0.0	96.2	0.5	3.3	0.118	0.508	21.343517	-89.248120
T. Der. Sinanché	8.00	1	0	1645	32.9	62.1	1.3	2.2	1.3	0.2	0.0	0.0	0.0	95.0	1.3	3.7	0.091	0.530	21.352704	-89.177868
T. Der. Sinanché	8.00	3	0	1248	34.6	59.0	0.4	4.3	1.1	0.3	0.1	0.2	0.0	93.6	0.4	6.0	0.099	0.500	21.352084	-89.164155
Chabihau	15.00	1	0	993	26.1	67.9	0.6	3.9	1.0	0.4	0.1	0.0	0.0	94.0	0.6	5.4	0.143	0.500	21.355096	-89.130474
Chabihau	15.00	3	0	501	14.1	80.4	0.5	3.7	0.7	0.3	0.2	0.1	0.0	94.5	0.5	5.0	0.150	0.520	21.358783	-89.102249
Santa Clara	26.00	1	0	500	13.4	79.9	0.7	4.3	1.1	0.5	0.1	0.0	0.0	93.3	0.7	6.0	0.214	0.561	21.371479	-89.025349
Santa Clara	26.00	3	0	495	21.2	74.1	1.1	2.4	0.7	0.2	0.3	0.0	0.0	95.3	1.1	3.6	0.111	0.600	21.374406	-89.002274
Dzilam de Bravo	39.00	1	0	693	27.9	66.9	0.7	3.3	0.9	0.2	0.1	0.0	0.0	94.8	0.7	4.5	0.115	0.600	21.387526	-88.912086

YUCATÁN

55 CARR: Thul - Becanchén

CLAVE: 31104

RUTA: YUC-281

AÑO: 2025

LUGAR	ESTACION				CLASIFICACION VEHICULAR EN PORCIENTO														COORDENADAS	
	KM	TE	SC	TDPA	M	A	B	C2	C3	T3S2	T3S3	T3S2R4	OTROS	A	B	C	K'	D	LATITUD	LONGITUD
T. C. Muna - Felipe Carrillo Puerto	0.00	3	0	204	33.8	54.9	3.5	5.3	1.2	0.8	0.5	0.0	0.0	88.7	3.5	7.8	0.137	0.929	20.086837	-89.099367
Becanchén	32.00																			

56 CARR: Ticul - Chapab

CLAVE: 31623

RUTA: YUC

AÑO: 2025

LUGAR	ESTACION				CLASIFICACION VEHICULAR EN PORCIENTO														COORDENADAS	
	KM	TE	SC	TDPA	M	A	B	C2	C3	T3S2	T3S3	T3S2R4	OTROS	A	B	C	K'	D	LATITUD	LONGITUD
Ticul	0.00	3	0	2681	35.5	60.1	0.8	2.0	0.5	0.7	0.2	0.1	0.1	95.6	0.8	3.6	0.098	0.525	20.412481	-89.520819
Chapab	8.00	1	0	2032	31.9	64.7	0.8	1.4	0.5	0.5	0.1	0.1	0.0	96.6	0.8	2.6	0.089	0.613	20.454926	-89.461785

57 CARR: Ticul - Dzan

CLAVE: 31621

RUTA: YUC

AÑO: 2025

LUGAR	ESTACION				CLASIFICACION VEHICULAR EN PORCIENTO														COORDENADAS	
	KM	TE	SC	TDPA	M	A	B	C2	C3	T3S2	T3S3	T3S2R4	OTROS	A	B	C	K'	D	LATITUD	LONGITUD
Ticul	0.00																			
T. Izq. Libramiento de Ticul	2.50	3	0	5093	42.4	53.1	0.5	1.7	0.5	1.2	0.2	0.3	0.1	95.5	0.5	4.0	0.078	0.518	20.394043	-89.507021
Dzan	7.00	1	0	4678	37.4	58.2	0.3	2.3	0.4	1.1	0.1	0.1	0.1	95.6	0.3	4.1	0.083	0.523	20.390496	-89.481643

58 CARR: Tixkokob - Baca

CLAVE: 31010

RUTA: YUC

AÑO: 2025

LUGAR	ESTACION				CLASIFICACION VEHICULAR EN PORCIENTO														COORDENADAS	
	KM	TE	SC	TDPA	M	A	B	C2	C3	T3S2	T3S3	T3S2R4	OTROS	A	B	C	K'	D	LATITUD	LONGITUD
Tixkokob	0.00	3	0	5044	58.1	36.8	0.8	1.7	1.1	0.8	0.1	0.6	0.0	94.9	0.8	4.3	0.075	0.668	21.007464	-89.417536
Baca	15.00	1	0	3543	55.6	40.7	0.7	1.7	0.4	0.5	0.3	0.1	0.0	96.3	0.7	3.0	0.084	0.582	21.096480	-89.398016

59 CARR: Tixkokob - Sotuta

CLAVE: 31106

RUTA: YUC

AÑO: 2025

LUGAR	ESTACION				CLASIFICACION VEHICULAR EN PORCIENTO														COORDENADAS	
	KM	TE	SC	TDPA	M	A	B	C2	C3	T3S2	T3S3	T3S2R4	OTROS	A	B	C	K'	D	LATITUD	LONGITUD
Tixkokob	0.00	3	0	3582	60.1	36.5	0.3	1.0	1.3	0.3	0.2	0.3	0.0	96.6	0.3	3.1	0.092	0.585	20.998201	-89.380606
Tahmek	24.00	3	0	1894	27.4	67.0	1.0	3.4	0.8	0.3	0.0	0.1	0.0	94.4	1.0	4.6	0.117	0.688	20.863011	-89.255488
Hocabá	31.00	3	0	959	31.6	61.7	1.5	3.8	1.0	0.3	0.1	0.0	0.0	93.3	1.5	5.2	0.118	0.531	20.810095	-89.239877
Huhí	43.00	1	0	1096	38.1	54.8	1.2	5.4	0.4	0.1	0.0	0.0	0.0	92.9	1.2	5.9	0.101	0.604	20.724314	-89.172195
Sotuta	65.00	1	0	311	33.8	60.4	1.1	2.9	0.8	0.5	0.3	0.2	0.0	94.2	1.1	4.7	0.096	0.500	20.603084	-89.020933

YUCATÁN

60 CARR: Tizimín - Yucatán

CLAVE: 31588

RUTA: YUC

AÑO: 2025

LUGAR	ESTACION				CLASIFICACION VEHICULAR EN PORCIENTO														COORDENADAS	
	KM	TE	SC	TDPA	M	A	B	C2	C3	T3S2	T3S3	T3S2R4	OTROS	A	B	C	K'	D	LATITUD	LONGITUD
Tizimín	0.00	3	0	4155	25.7	68.5	0.8	2.4	1.5	0.2	0.3	0.4	0.2	94.2	0.8	5.0	0.083	0.549	21.149551	-88.110401
T. Der. Buenaventura	30.00	3	0	2406	10.7	80.3	2.0	4.0	1.5	0.6	0.2	0.5	0.2	91.0	2.0	7.0	0.080	0.549	21.179635	-87.923710
Yucatán	46.50	1	0	2246	10.1	81.4	2.0	3.1	1.9	0.4	0.3	0.6	0.2	91.5	2.0	6.5	0.086	0.528	21.203498	-87.728056

61 CARR: Yaxché - Sierra Papacal

CLAVE: 31620

RUTA: YUC

AÑO: 2025

LUGAR	ESTACION				CLASIFICACION VEHICULAR EN PORCIENTO														COORDENADAS	
	KM	TE	SC	TDPA	M	A	B	C2	C3	T3S2	T3S3	T3S2R4	OTROS	A	B	C	K'	D	LATITUD	LONGITUD
T. C. Mérida - Progreso	0.00	3	0	7470	20.5	71.4	1.0	4.9	0.8	0.7	0.6	0.1	0.0	91.9	1.0	7.1	0.087	0.553	21.105227	-89.641925
Sierra Papacal	12.00	1	0	2407	23.2	71.0	0.7	3.3	1.4	0.2	0.1	0.1	0.0	94.2	0.7	5.1	0.101	0.723	21.122364	-89.722238

62 CARR: Yobaín - Chabihau

CLAVE: 31610

RUTA: YUC

AÑO: 2025

LUGAR	ESTACION				CLASIFICACION VEHICULAR EN PORCIENTO														COORDENADAS	
	KM	TE	SC	TDPA	M	A	B	C2	C3	T3S2	T3S3	T3S2R4	OTROS	A	B	C	K'	D	LATITUD	LONGITUD
T. C. Baca - Dzidzantún	0.00	3	0	815	49.0	48.6	0.5	0.8	0.7	0.3	0.1	0.0	0.0	97.6	0.5	1.9	0.113	0.783	21.239447	-89.116814
Chabihau	12.00	1	0	540	48.2	48.8	0.5	1.2	0.7	0.5	0.1	0.0	0.0	97.0	0.5	2.5	0.131	0.817	21.354540	-89.117207

63 CARR: Chemax - Cobá

CLAVE:

RUTA: YUC-MEX-180

AÑO: 2025

LUGAR	ESTACION				CLASIFICACION VEHICULAR EN PORCIENTO														COORDENADAS	
	KM	TE	SC	TDPA	M	A	B	C2	C3	T3S2	T3S3	T3S2R4	OTROS	A	B	C	K'	D	LATITUD	LONGITUD
Chemax	0.00	3	0	5538	3.9	84.6	2.4	2.8	1.8	1.7	1.0	1.4	0.4	88.5	2.4	9.1	0.083	0.887	20.656666	-87.954419
Lim. Edos. Term. Yucatán Ppia. Q Roo.	25.00																			
Cobá	30.90	1	0	5348	4.1	85.4	2.5	2.6	1.5	1.7	0.8	1.3	0.1	89.5	2.5	8.0	0.082	0.716	20.509862	-87.722085

64 CARR: Progreso - Celestún

CLAVE: 31040

RUTA: MEX-YUC

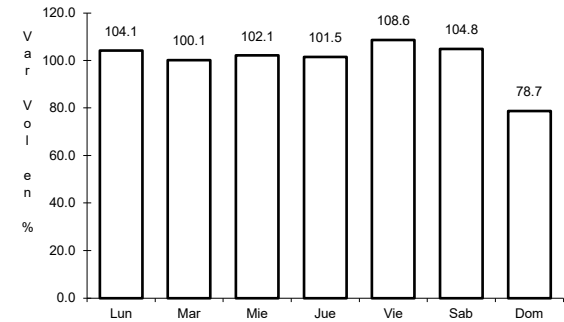
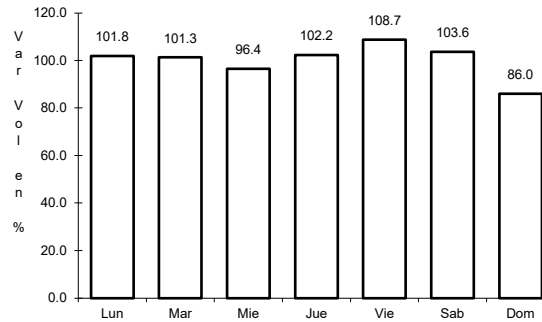
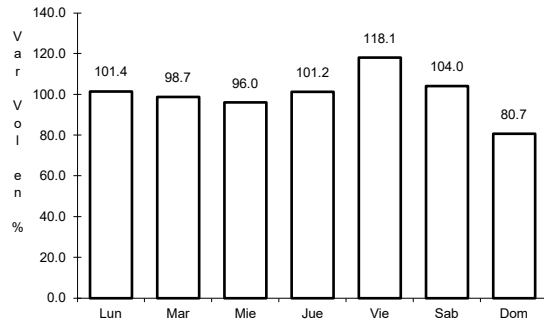
AÑO: 2025

LUGAR	ESTACION				CLASIFICACION VEHICULAR EN PORCIENTO														COORDENADAS	
	KM	TE	SC	TDPA	M	A	B	C2	C3	T3S2	T3S3	T3S2R4	OTROS	A	B	C	K'	D	LATITUD	LONGITUD
T. C. Mérida - Progreso	0.00	3	1	5580	23.4	72.4	0.5	2.7	0.7	0.3	0.0	0.0	0.0	95.8	0.5	3.7	0.098	0.560	21.274357	-89.692691
T. C. Mérida - Progreso	0.00	3	2	5415	23.8	72.0	0.7	2.5	0.6	0.4	0.0	0.0	0.0	95.8	0.7	3.5	0.102	0.560	21.274361	-89.692626
Yucalpetén	6.00	3	0	8140	11.1	86.4	0.3	1.3	0.1	0.8	0.0	0.0	0.0	97.5	0.3	2.2	0.081	0.579	21.274548	-89.725710
Celestún	80.00																			

1 CARR: Campeche - Mérida

CLAVE: 00066

ruta: MEX-180



Km: 0.00 Tipo: 3 Sent: 1

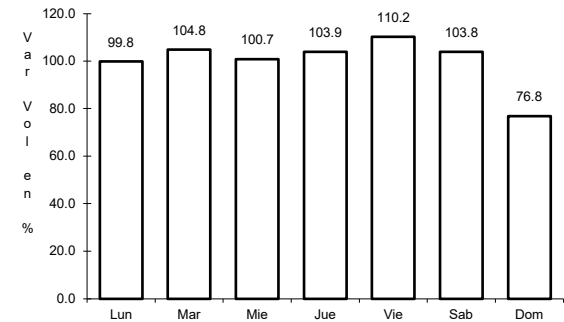
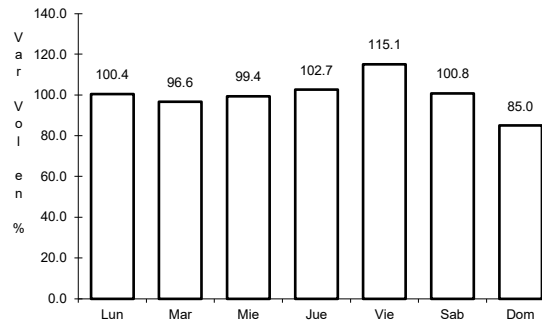
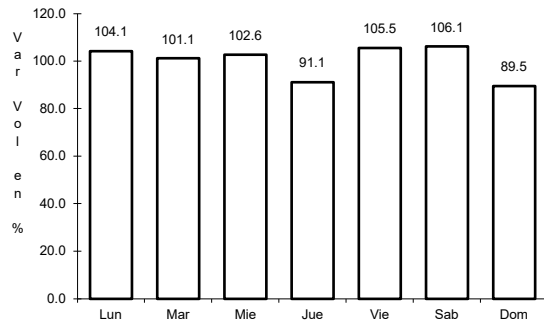
Km: 0.00 Tipo: 3 Sent: 2

Km: 159.00 Tipo: 1 Sent: 1

2 CARR: Campeche - Umán

CLAVE: 00164

ruta: MEX-261



Km: 7.85 Tipo: 1 Sent: 0

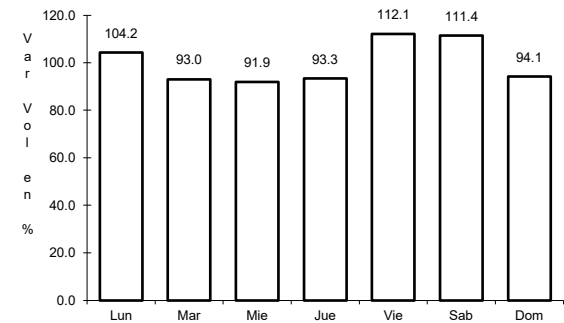
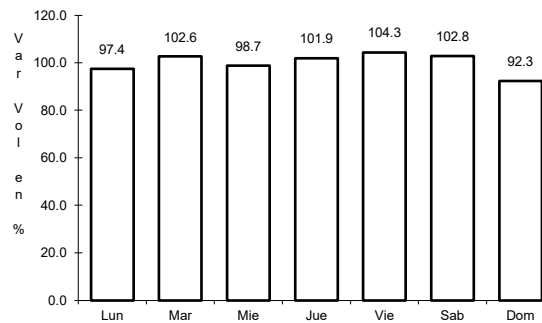
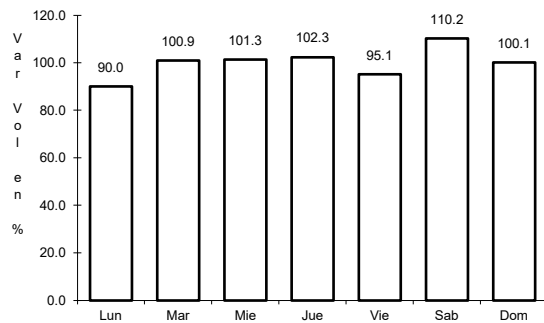
Km: 120.00 Tipo: 3 Sent: 0

Km: 233.70 Tipo: 1 Sent: 0

3 CARR: Cansahcab - Tizimin

CLAVE: 31014

ruta: MEX-176



Km: 60.00 Tipo: 3 Sent: 0

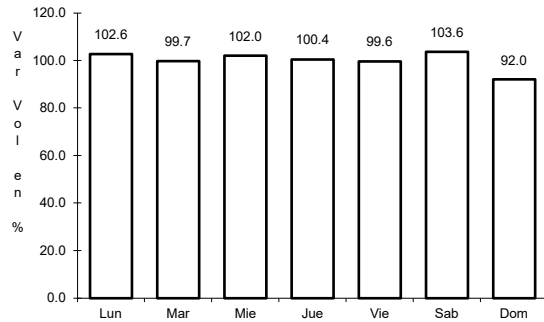
Km: 95.00 Tipo: 3 Sent: 0

Km: 160.00 Tipo: 1 Sent: 0

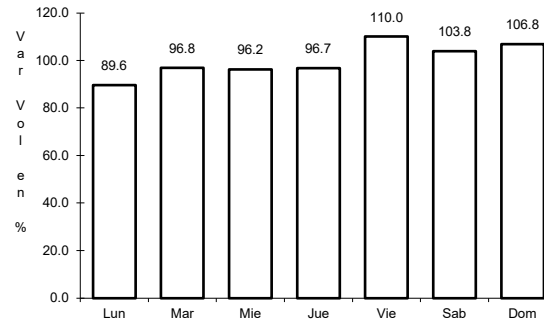
4 CARR: Conkal - Puerto Chicxulub

CLAVE: 31004

ruta: MEX-176



Km: 0.00 Tipo: 3 Sent: 0

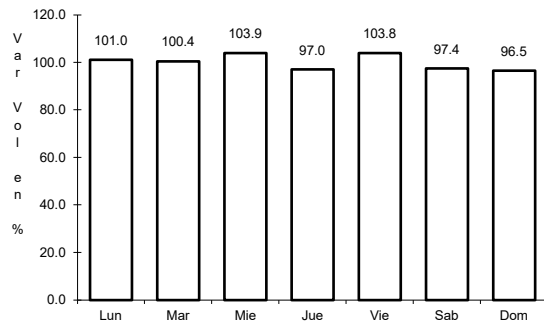


Km: 27.00 Tipo: 1 Sent: 0

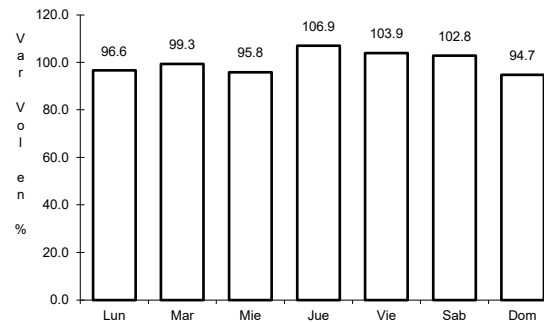
5 CARR: Dzitbalché - Ent. San Bernardo

CLAVE: 00162

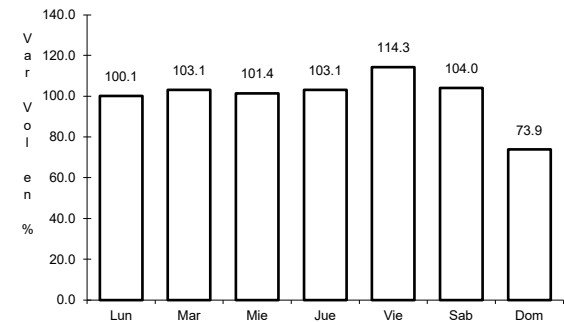
ruta: MEX-180



Km: 12.33 Tipo: 1 Sent: 0



Km: 21.08 Tipo: 1 Sent: 0

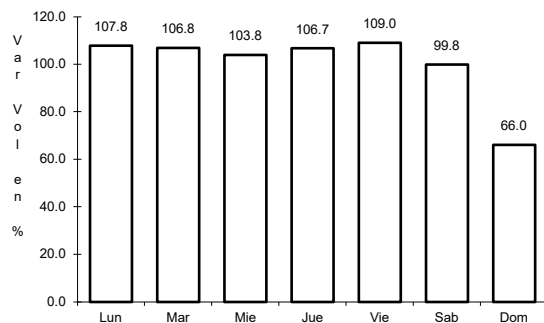


Km: 40.36 Tipo: 3 Sent: 0

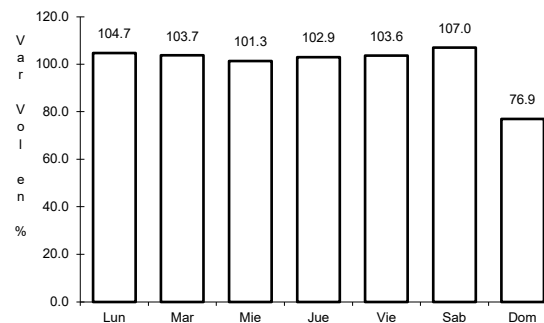
6 CARR: Ent. Poxilá - Mérida

CLAVE: 31003

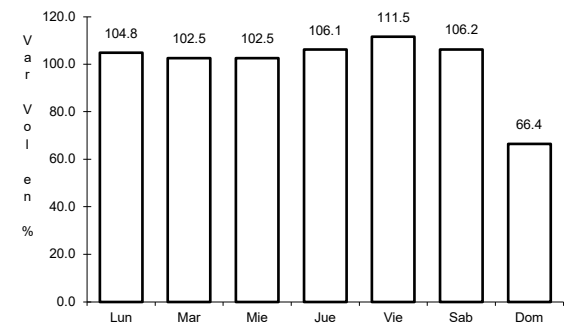
ruta: MEX-180



Km: 9.46 Tipo: 1 Sent: 0



Km: 25.70 Tipo: 1 Sent: 1

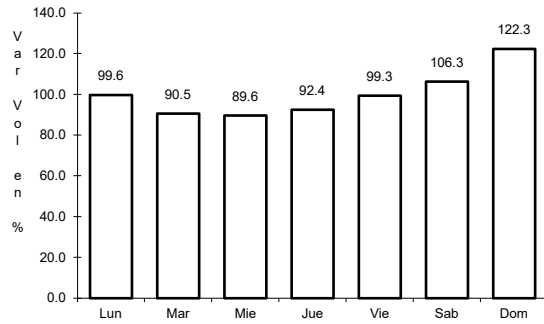


Km: 25.70 Tipo: 1 Sent: 2

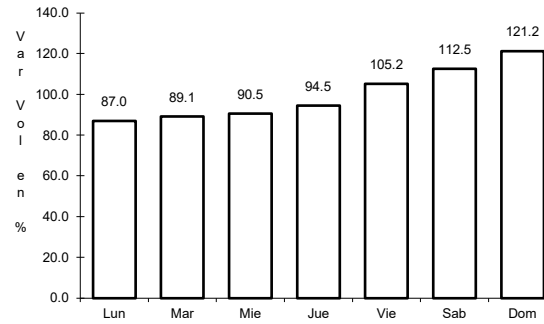
7 CARR: Hunucmá - Sisal

CLAVE: 31021

ruta: MEX-281



Km: 0.00 Tipo: 3 Sent: 0

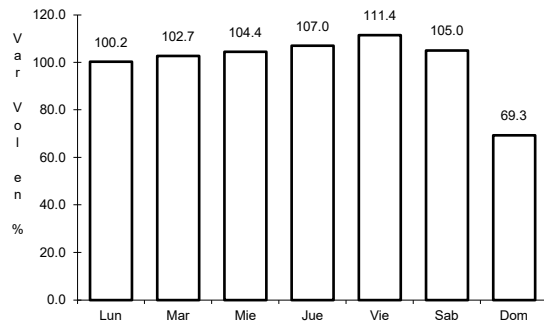


Km: 23.20 Tipo: 1 Sent: 0

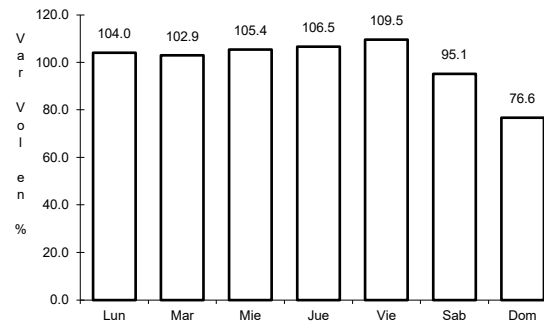
8 CARR: Libramiento Conkal - Mococho - Baca

CLAVE:

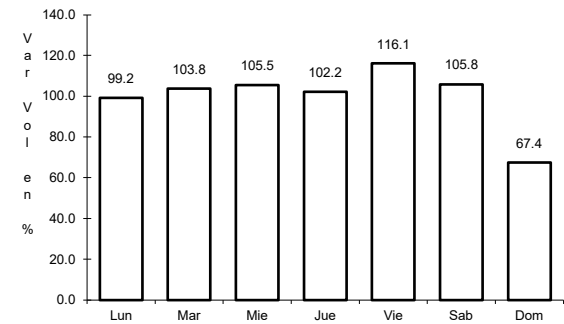
ruta: MEX-176



Km: 4.40 Tipo: 3 Sent: 1



Km: 4.40 Tipo: 3 Sent: 2

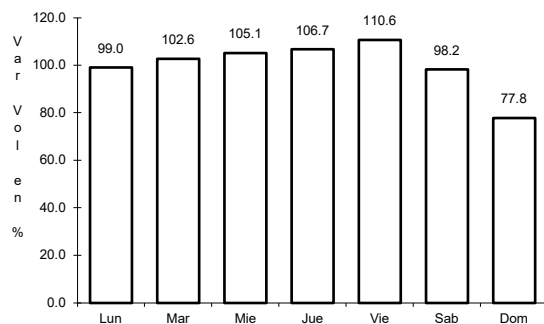


Km: 24.41 Tipo: 1 Sent: 1

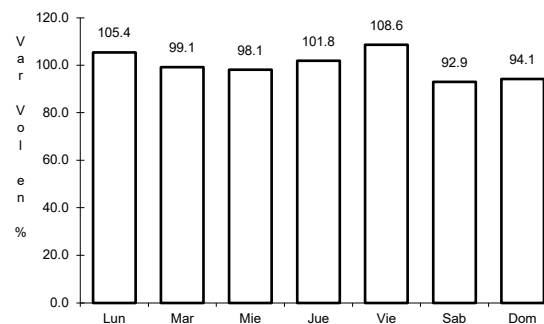
9 CARR: Libramiento de Conkal

CLAVE:

ruta: MEX



Km: 0.00 Tipo: 3 Sent: 0

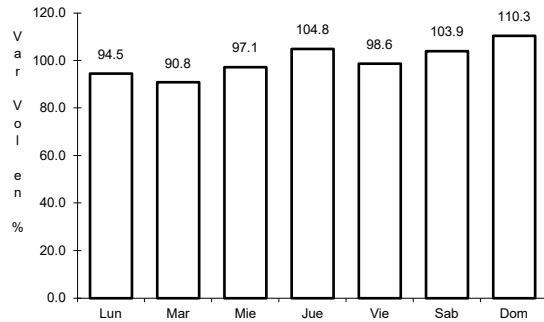


Km: 14.00 Tipo: 1 Sent: 0

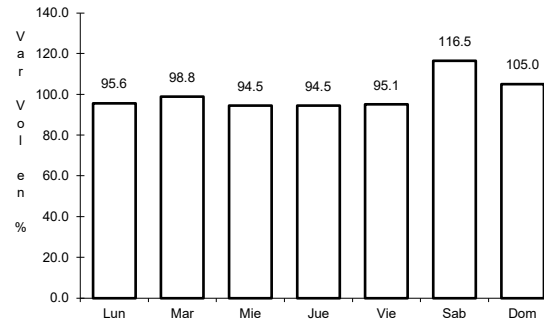
10 CARR: Libramiento de Progreso

CLAVE: 31631

ruta: MEX-261



Km: 0.00 Tipo: 3 Sent: 0

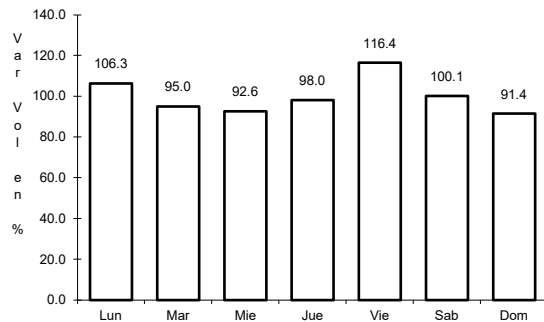


Km: 6.50 Tipo: 1 Sent: 0

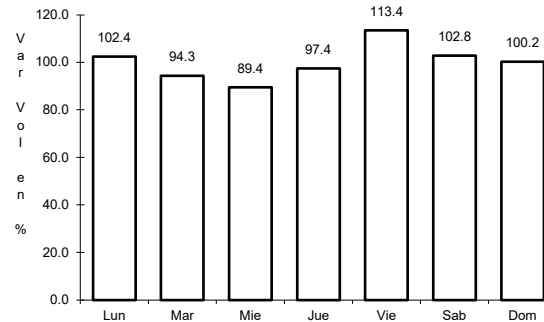
11 CARR: Libramiento de Tahmek - Hochtun - Xocchel

CLAVE:

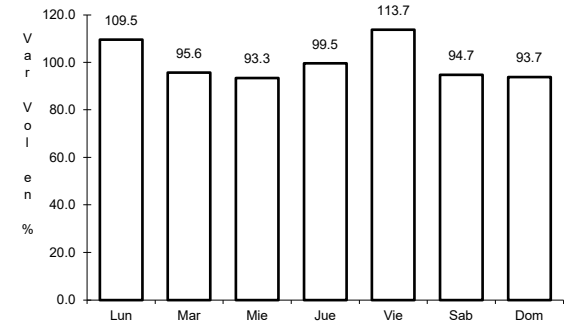
ruta: MEX-180



Km: 42.00 Tipo: 3 Sent: 1



Km: 42.00 Tipo: 3 Sent: 2

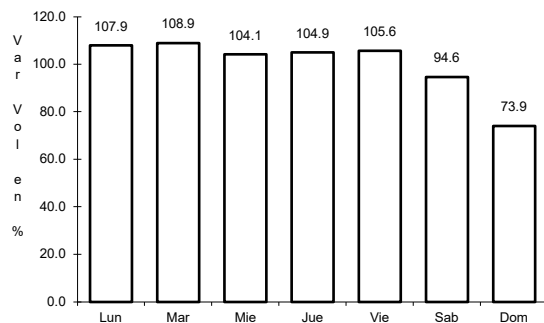


Km: 48.30 Tipo: 3 Sent: 1

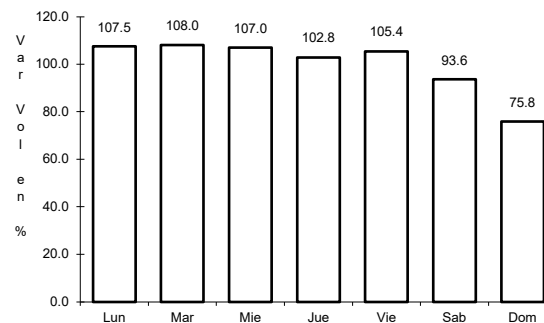
12 CARR: Mérida - Celestún

CLAVE: 31025

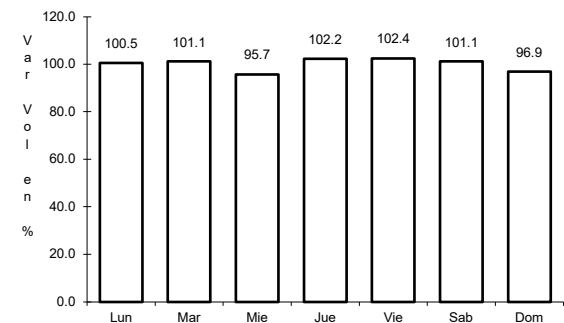
ruta: MEX-281



Km: 0.00 Tipo: 3 Sent: 1



Km: 0.00 Tipo: 3 Sent: 2

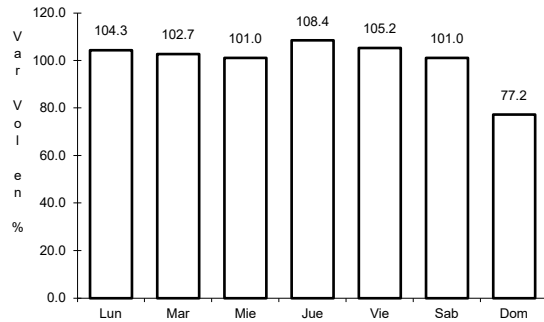


Km: 40.00 Tipo: 3 Sent: 0

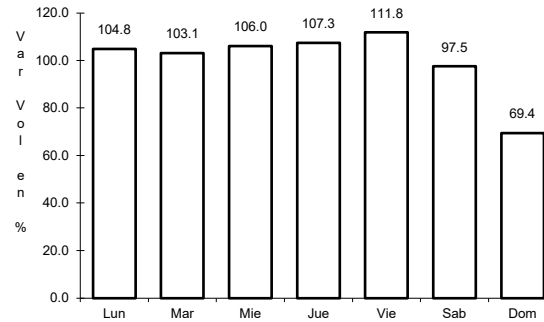
13 CARR: Mérida - Dzilam de Bravo

CLAVE: 31001

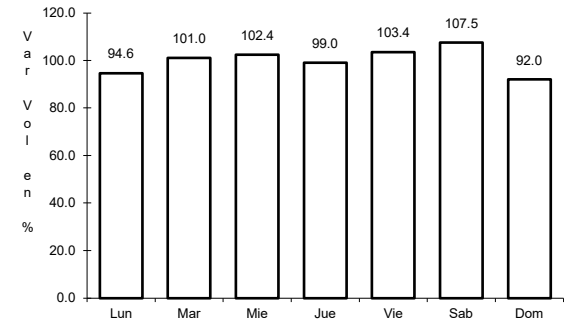
RUTA: MEX-176



Km: 5.90 Tipo: 1 Sent: 1



Km: 5.90 Tipo: 1 Sent: 2

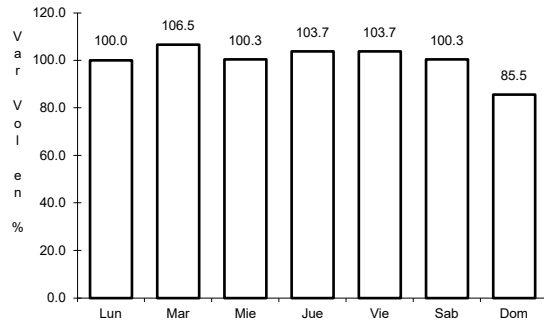


Km: 105.00 Tipo: 1 Sent: 0

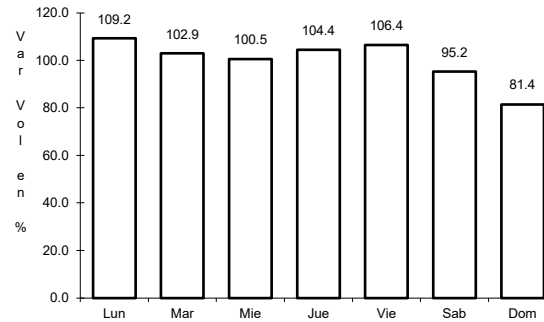
14 CARR: Mérida - Progreso

CLAVE: 31091

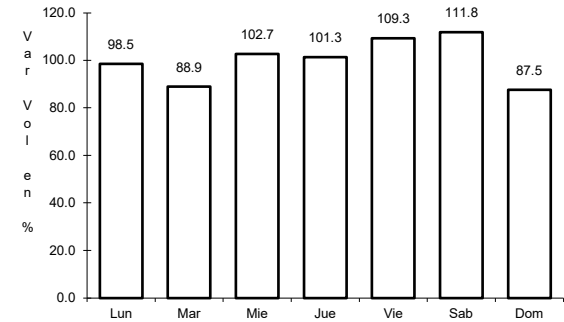
RUTA: MEX-261



Km: 5.40 Tipo: 1 Sent: 1



Km: 5.40 Tipo: 1 Sent: 2

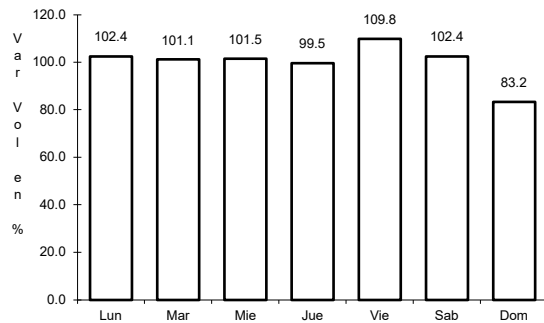


Km: 35.04 Tipo: 1 Sent: 1

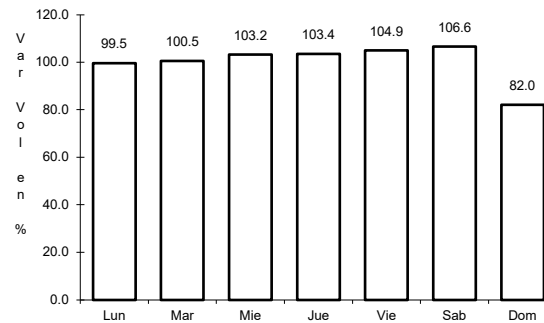
15 CARR: Mérida - Puerto Juárez

CLAVE: 00067

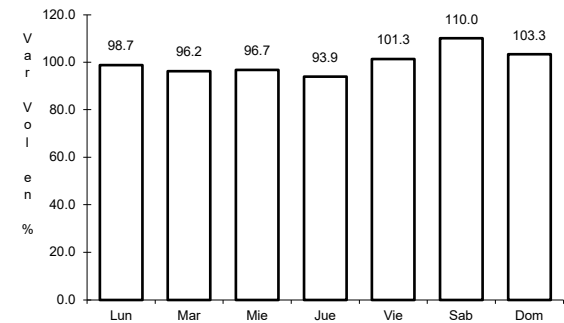
RUTA: MEX-180



Km: 5.60 Tipo: 1 Sent: 1



Km: 5.60 Tipo: 1 Sent: 2

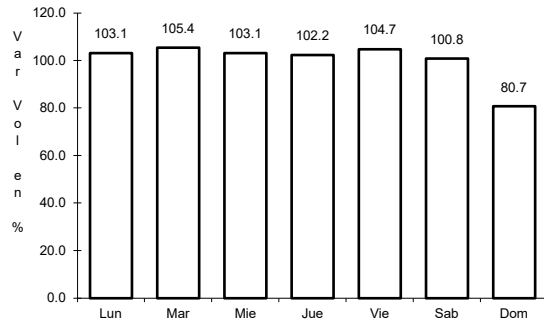


Km: 302.50 Tipo: 1 Sent: 0

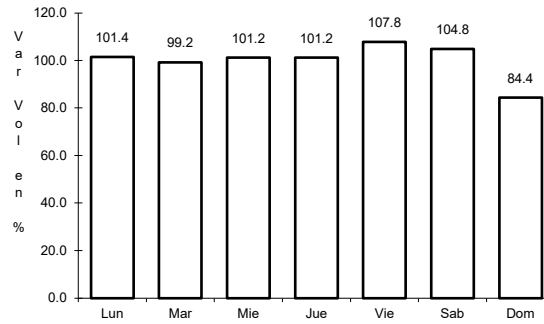
16 CARR: Mérida - Tekanto

CLAVE: 31587

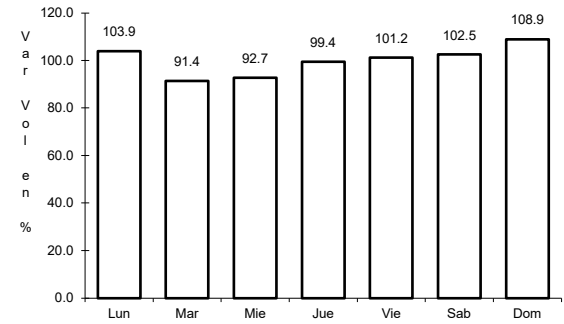
RUTA: MEX-180



Km: 5.70 Tipo: 1 Sent: 0



Km: 21.00 Tipo: 1 Sent: 0

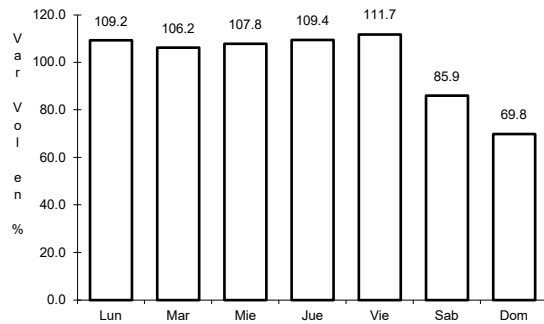


Km: 51.00 Tipo: 1 Sent: 0

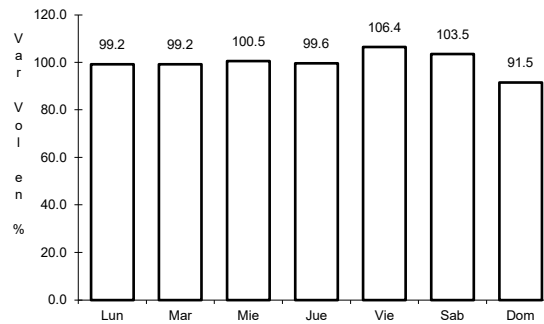
17 CARR: Mérida - Tetziz

CLAVE: 31610

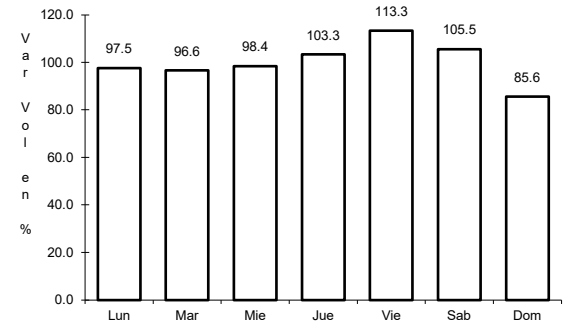
RUTA: MEX-281



Km: 0.00 Tipo: 3 Sent: 0



Km: 17.98 Tipo: 1 Sent: 0

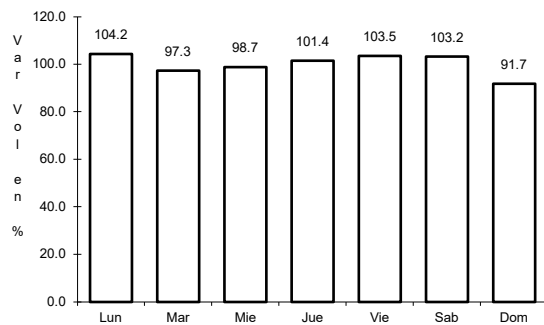


Km: 24.40 Tipo: 1 Sent: 0

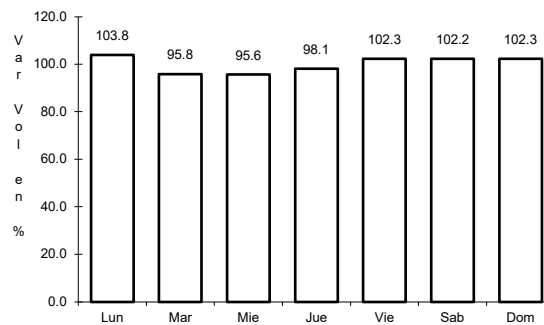
18 CARR: Muna - Felipe Carrillo Puerto

CLAVE: 00148

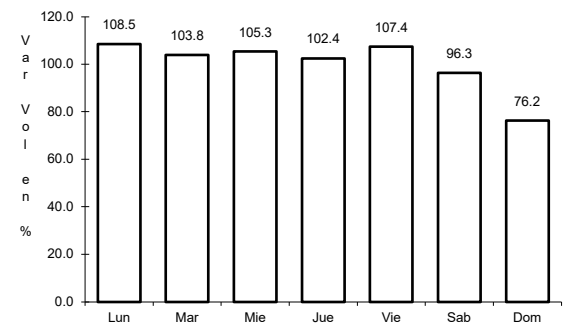
RUTA: MEX-184



Km: 0.00 Tipo: 3 Sent: 0



Km: 109.60 Tipo: 3 Sent: 0

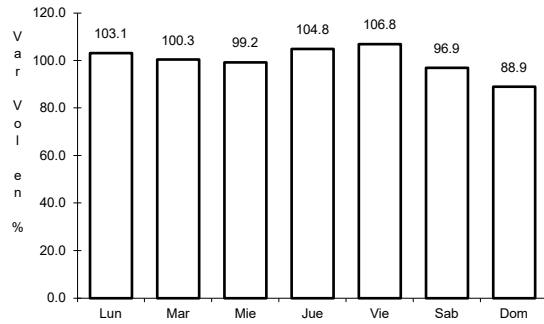


Km: 216.97 Tipo: 1 Sent: 0

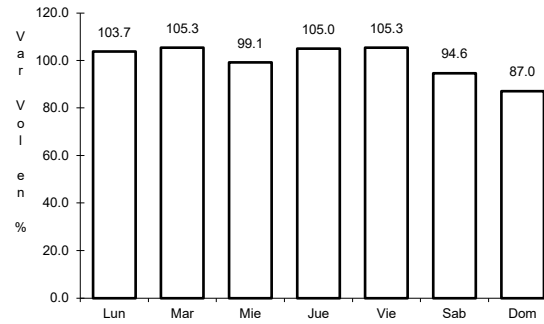
19 CARR: Ramal a Panabá

CLAVE: 31609

ruta: MEX-295



Km: 0.00 Tipo: 3 Sent: 0

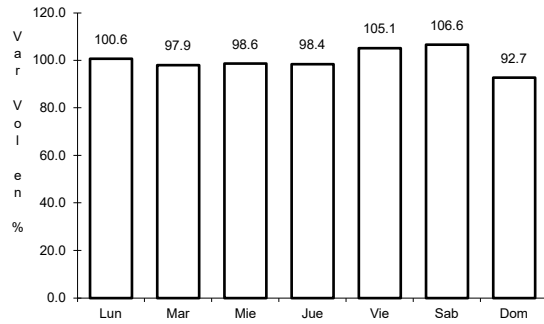


Km: 18.00 Tipo: 1 Sent: 0

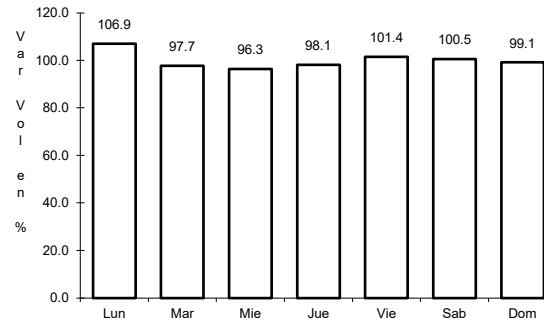
20 CARR: Teya -Peto

CLAVE: 31042

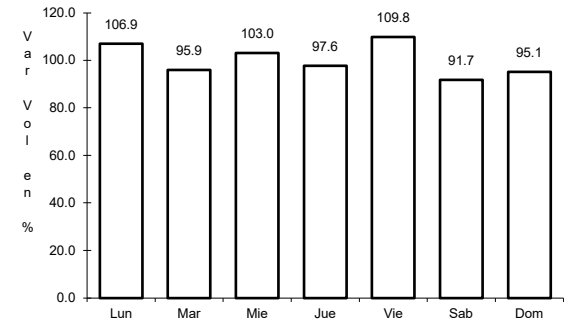
ruta: MEX-184



Km: 3.80 Tipo: 3 Sent: 1



Km: 3.80 Tipo: 3 Sent: 2

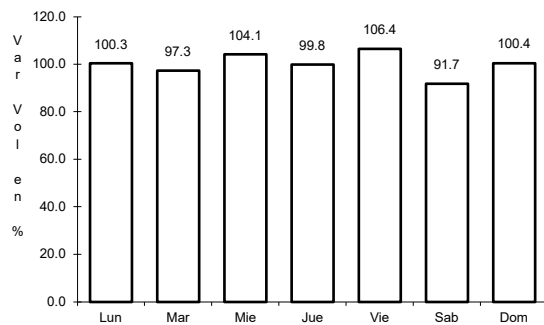


Km: 120.70 Tipo: 1 Sent: 0

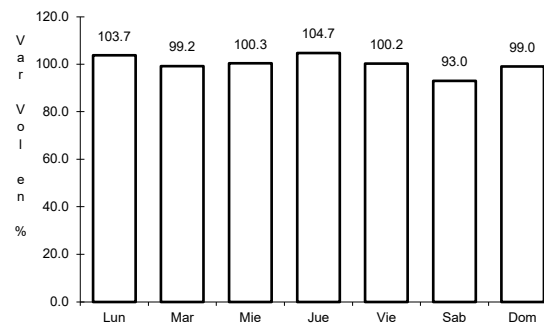
21 CARR: Tzucacab - Santa Rosa

CLAVE: 31017

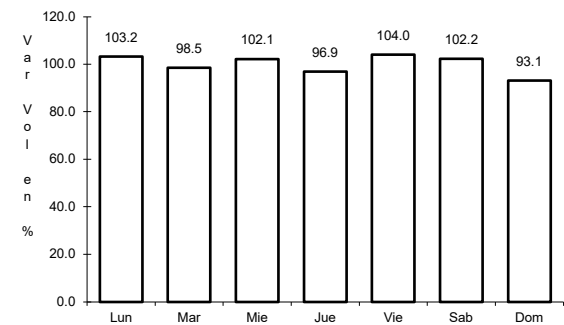
ruta: MEX



Km: 0.00 Tipo: 3 Sent: 0



Km: 16.00 Tipo: 3 Sent: 0

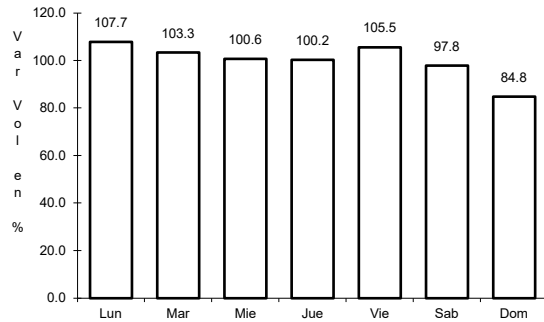


Km: 34.50 Tipo: 1 Sent: 0

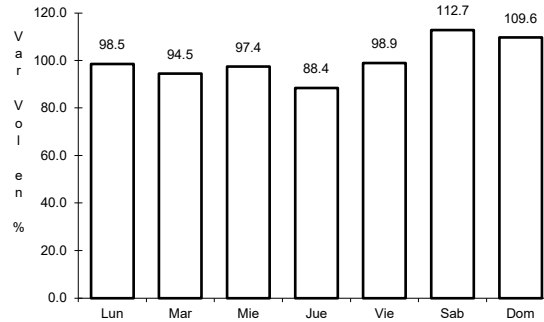
22 CARR: Valladolid - Felipe Carrillo Puerto

CLAVE: 00010

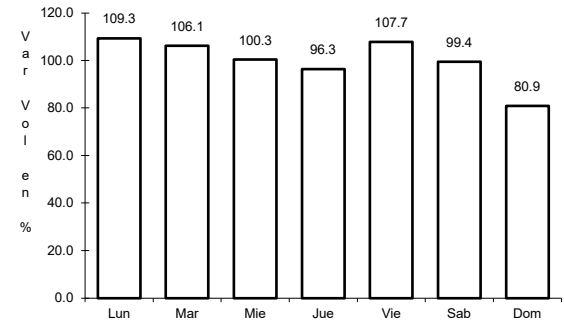
ruta: MEX-295



Km: 0.00 Tipo: 3 Sent: 0



Km: 99.00 Tipo: 1 Sent: 0

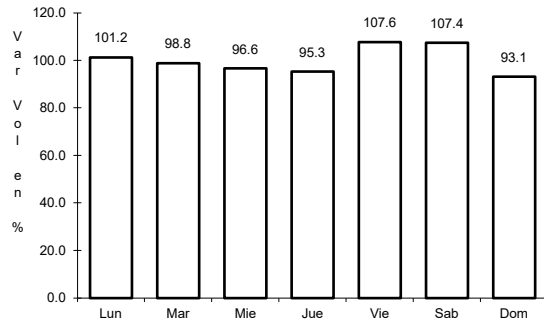


Km: 147.70 Tipo: 1 Sent: 0

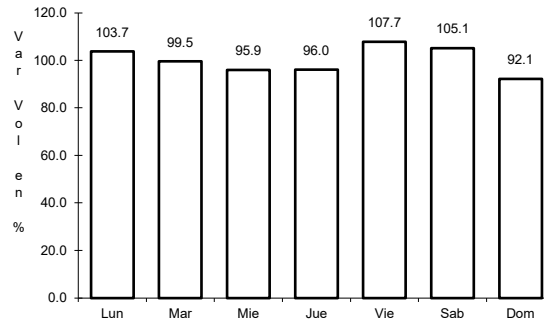
23 CARR: Valladolid - Río Lagartos

CLAVE: 31035

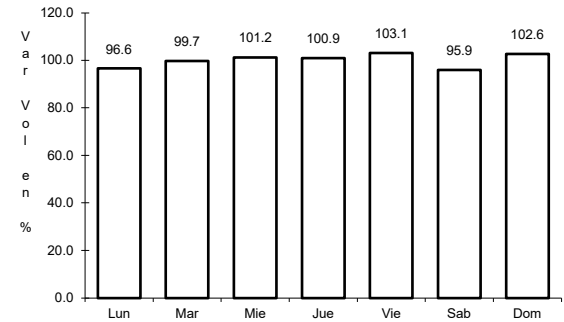
ruta: MEX-295



Km: 0.00 Tipo: 3 Sent: 1



Km: 0.00 Tipo: 3 Sent: 2

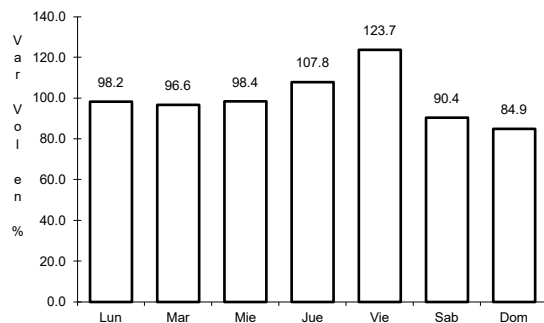


Km: 79.90 Tipo: 1 Sent: 0

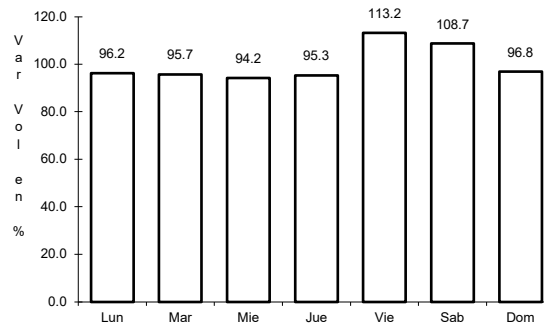
24 CARR: Mérida - Cancún (Cuota)

CLAVE: 00071

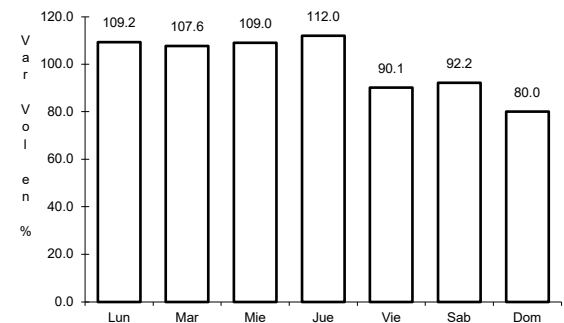
ruta: MEX-180D



Km: 115.34 Tipo: 1 Sent: 1



Km: 115.34 Tipo: 1 Sent: 2

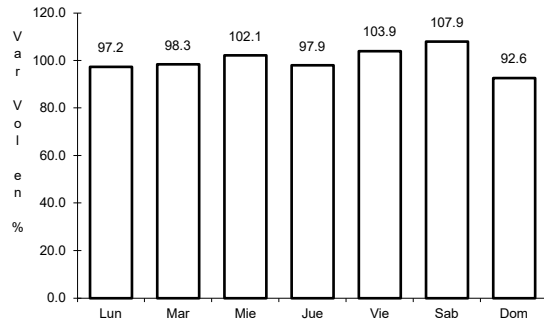


Km: 307.80 Tipo: 1 Sent: 0

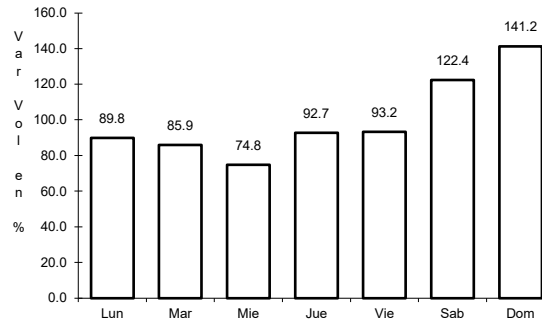
25 CARR: Acanceh - Estación Polabán

CLAVE: 31615

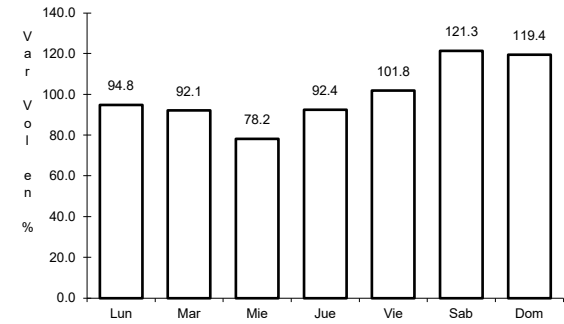
ruta: YUC



Km: 0.00 Tipo: 3 Sent: 0



Km: 20.00 Tipo: 3 Sent: 0

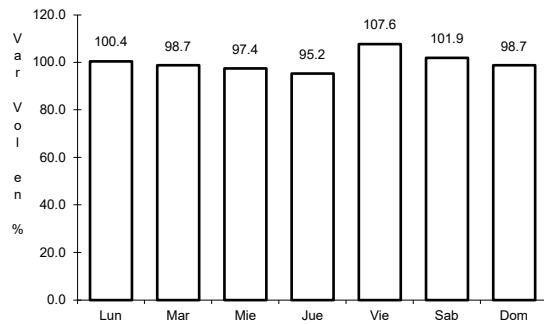


Km: 24.40 Tipo: 1 Sent: 0

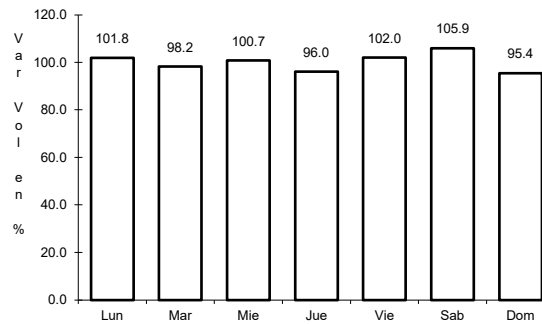
26 CARR: Baca - Dzidzantún

CLAVE: 31591

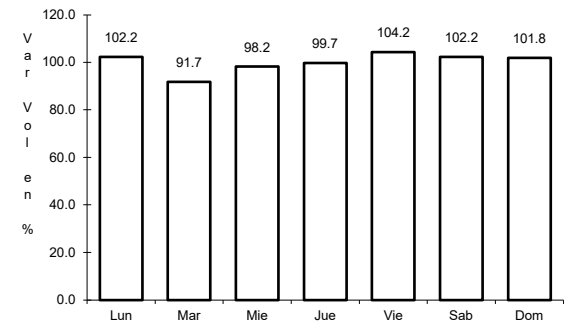
ruta: YUC



Km: 0.00 Tipo: 3 Sent: 0



Km: 19.10 Tipo: 3 Sent: 0

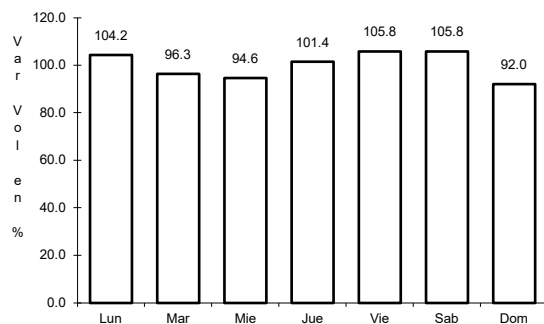


Km: 43.00 Tipo: 1 Sent: 0

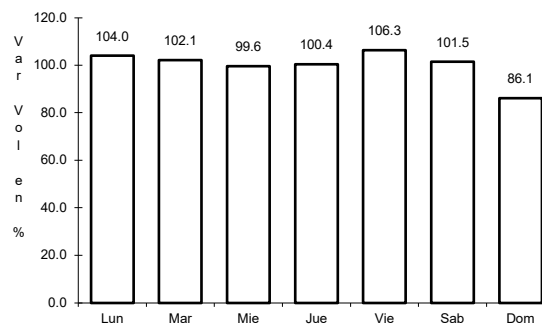
27 CARR: Calotmul - Sucilá

CLAVE: 31617

ruta: YUC



Km: 0.00 Tipo: 3 Sent: 0

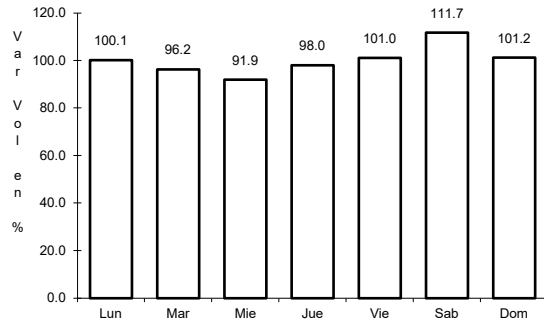


Km: 30.00 Tipo: 1 Sent: 0

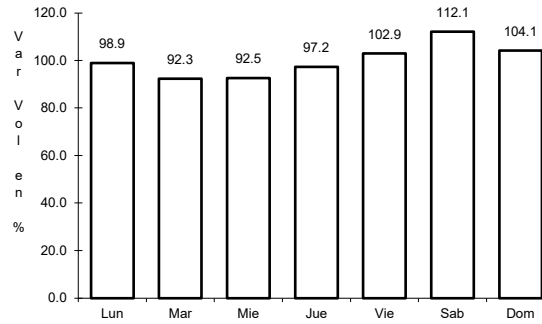
28 CARR: Citilcum - Tixkochoh

CLAVE: 31064

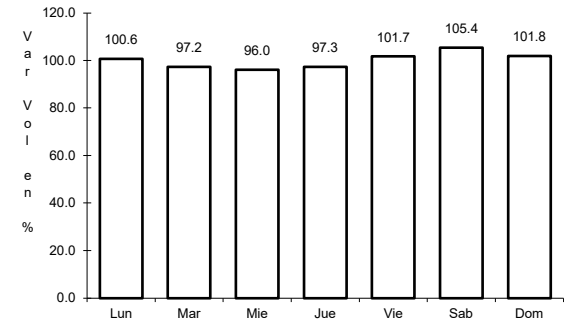
ruta: YUC



Km: 0.00 Tipo: 3 Sent: 0



Km: 7.00 Tipo: 1 Sent: 0

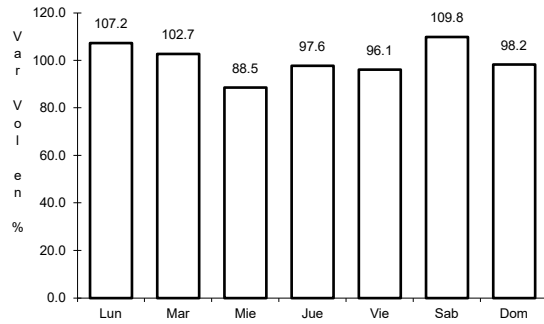


Km: 10.00 Tipo: 1 Sent: 0

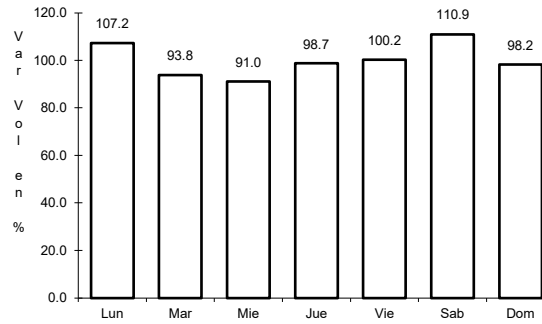
29 CARR: Dzemul - Xtampú

CLAVE: 31608

ruta: YUC



Km: 0.00 Tipo: 3 Sent: 0

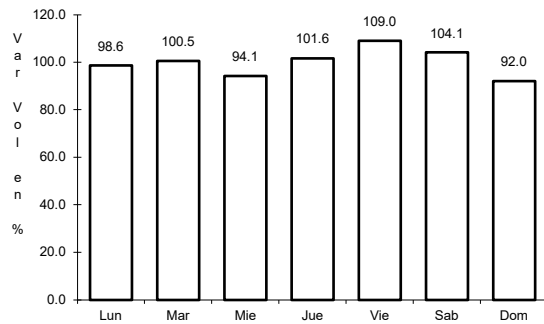


Km: 10.00 Tipo: 1 Sent: 0

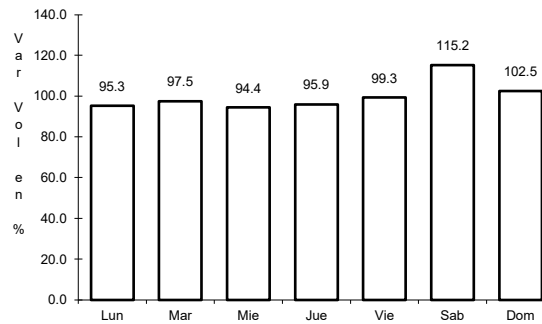
30 CARR: Dzidzantún - Santa Clara

CLAVE: 31592

ruta: YUC



Km: 0.00 Tipo: 3 Sent: 0

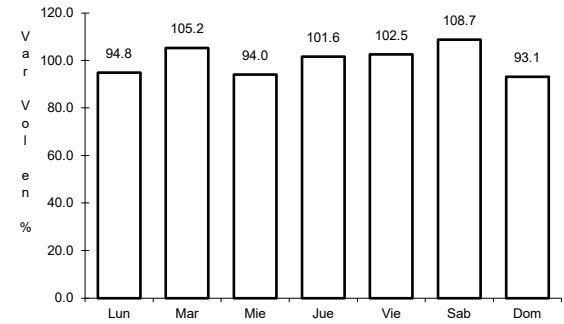
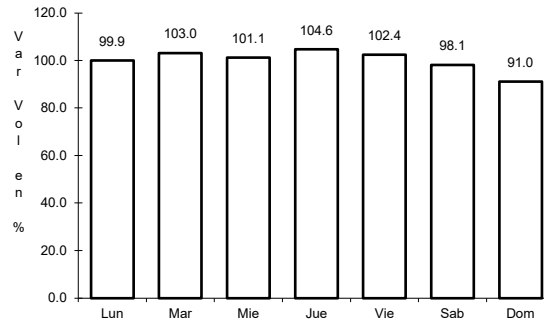
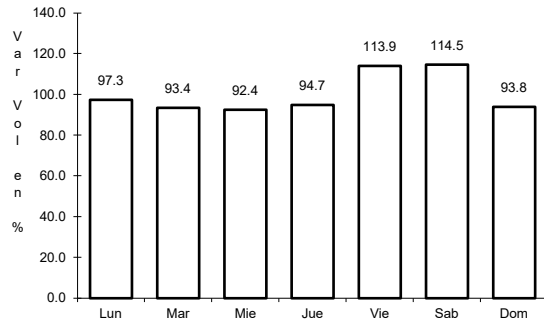


Km: 14.00 Tipo: 1 Sent: 0

31 CARR: Hochtún - Cenotillo

CLAVE: 31011

ruta: YUC-011



Km: 0.00 Tipo: 3 Sent: 0

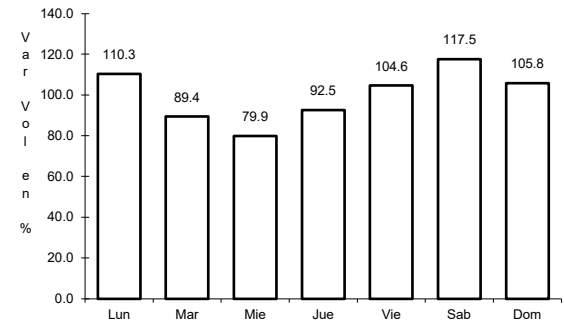
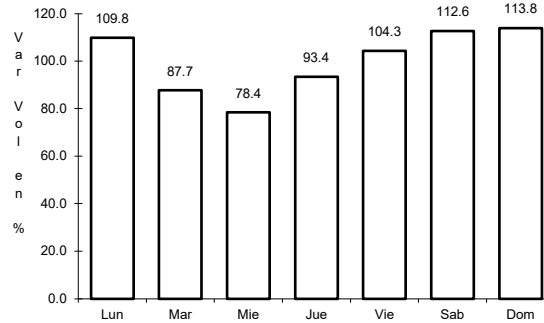
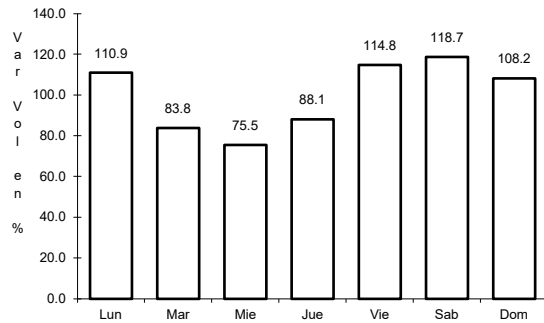
Km: 24.00 Tipo: 3 Sent: 0

Km: 70.90 Tipo: 1 Sent: 0

32 CARR: Holcá - Sotuta

CLAVE: 31626

ruta: YUC



Km: 0.00 Tipo: 3 Sent: 0

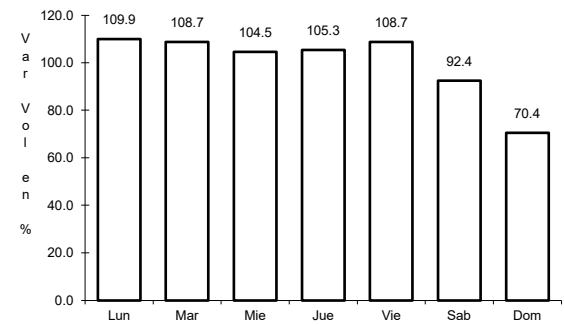
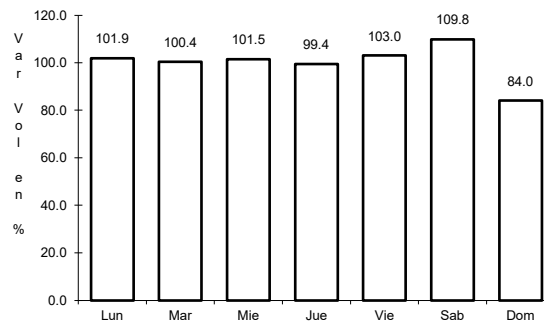
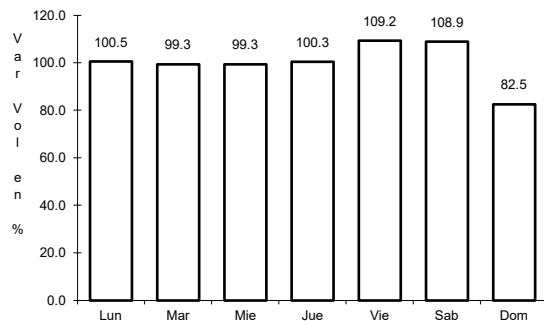
Km: 10.00 Tipo: 3 Sent: 0

Km: 20.00 Tipo: 1 Sent: 0

33 CARR: Hunucmá - Umán

CLAVE: 31610

ruta: YUC



Km: 0.00 Tipo: 3 Sent: 0

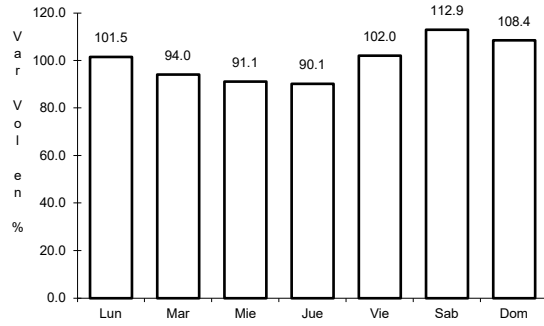
Km: 16.16 Tipo: 1 Sent: 0

Km: 22.00 Tipo: 1 Sent: 0

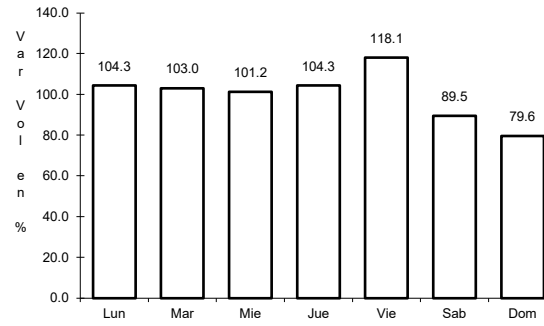
34 CARR: Izamal - Dzilam González

CLAVE: 31605

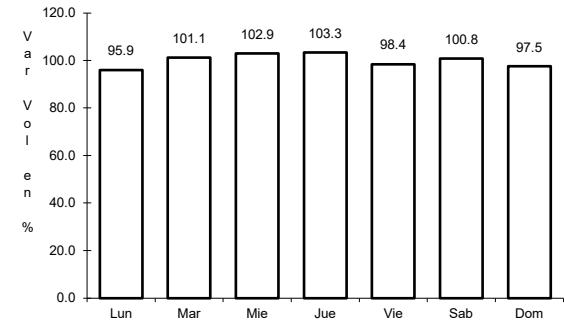
RUTA: YUC



Km: 0.00 Tipo: 3 Sent: 0



Km: 30.00 Tipo: 1 Sent: 0

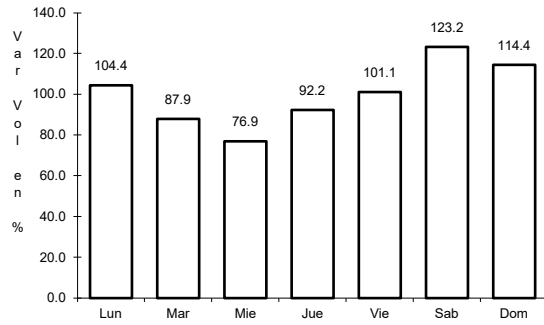


Km: 43.00 Tipo: 1 Sent: 0

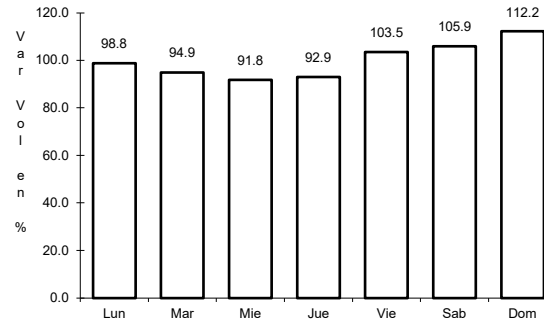
35 CARR: Kantunil - Izamal

CLAVE: 31012

RUTA: YUC



Km: 0.00 Tipo: 3 Sent: 0

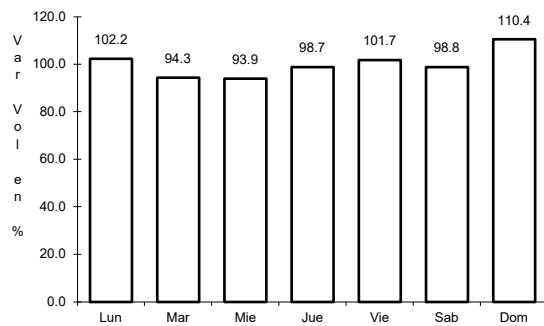


Km: 17.80 Tipo: 1 Sent: 0

36 CARR: Kinchil - Umán

CLAVE: 31009

RUTA: YUC

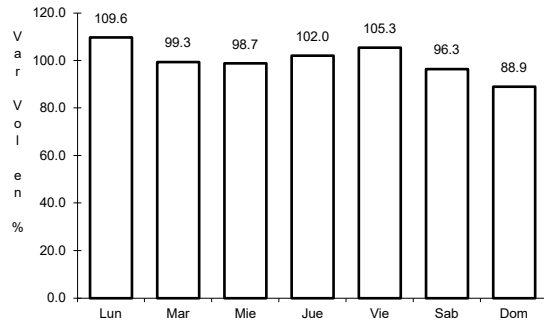


Km: 0.00 Tipo: 3 Sent: 0

37 CARR: Libramiento de Peto

CLAVE:

ruta: YUC-018



Km: 0.00

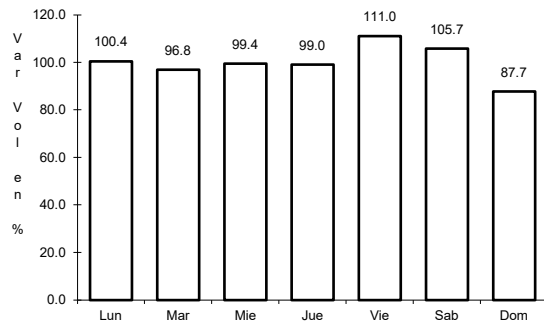
Tipo: 3

Sent: 0

38 CARR: Libramiento Norte de Motul

CLAVE: 31610

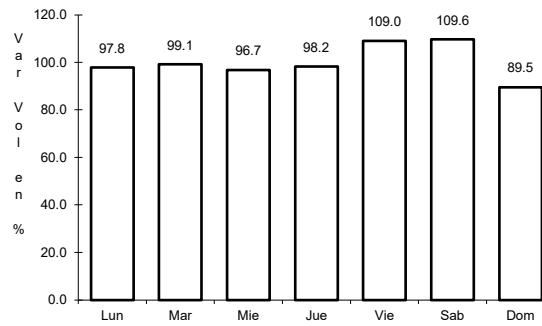
ruta: YUC



Km: 0.00

Tipo: 3

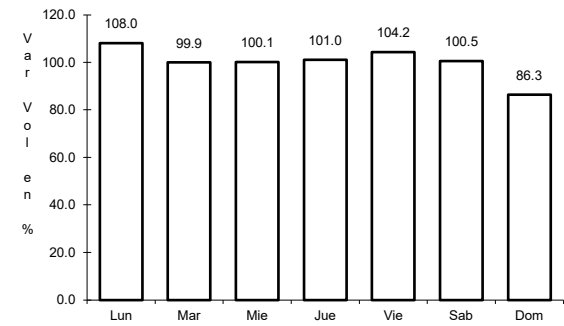
Sent: 0



Km: 3.16

Tipo: 3

Sent: 0



Km: 6.53

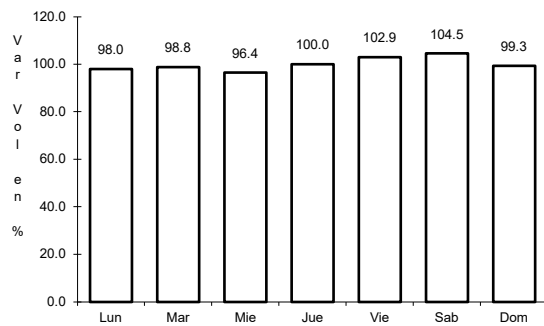
Tipo: 1

Sent: 0

39 CARR: Mérida - Acanceh

CLAVE: 31023

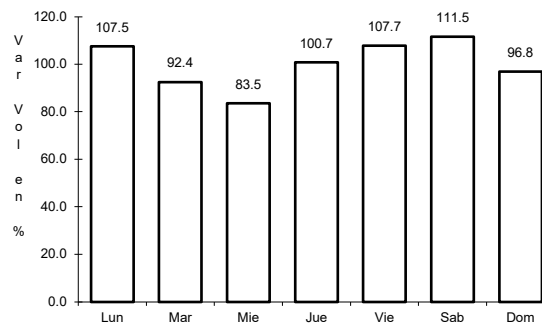
ruta: YUC



Km: 0.00

Tipo: 3

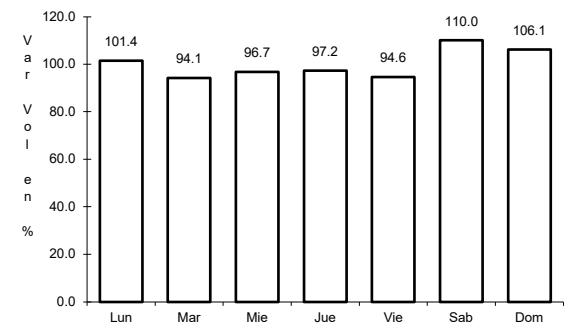
Sent: 0



Km: 11.00

Tipo: 3

Sent: 0



Km: 26.00

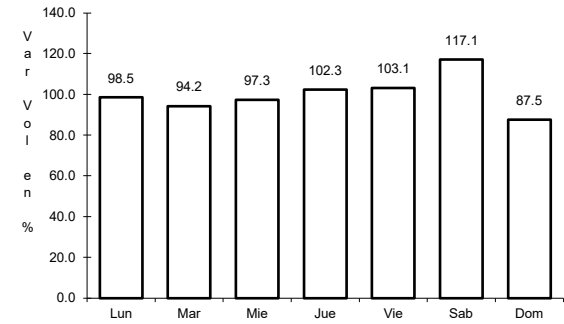
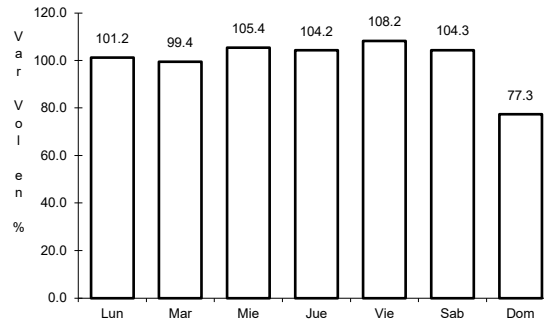
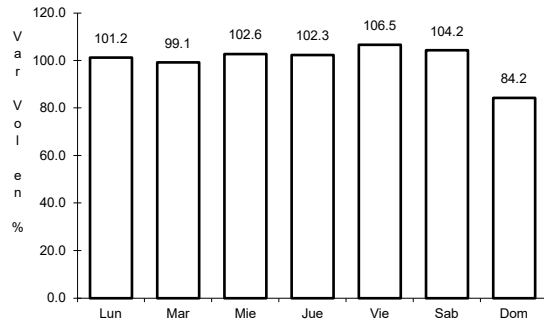
Tipo: 1

Sent: 0

40 CARR: Mérida - Oxkutzcab

CLAVE: 31018

ruta: YUC-018



Km: 0.00 Tipo: 3 Sent: 1

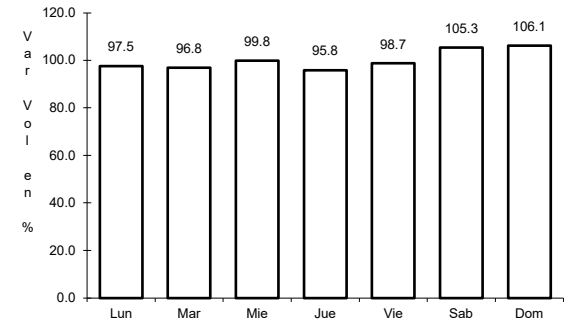
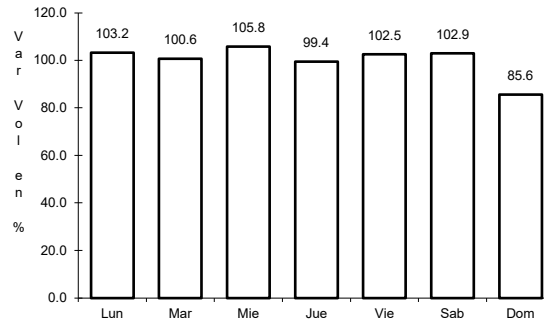
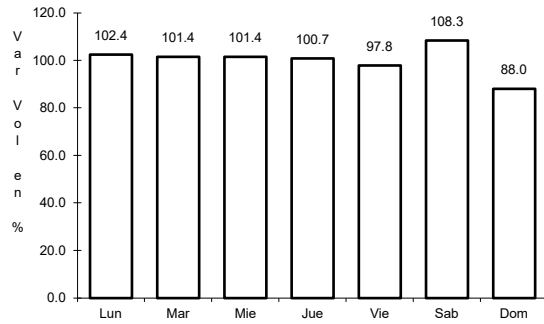
Km: 0.00 Tipo: 3 Sent: 2

Km: 109.30 Tipo: 1 Sent: 0

41 CARR: Mérida - Timucuy

CLAVE: 31024

ruta: YUC



Km: 0.00 Tipo: 3 Sent: 0

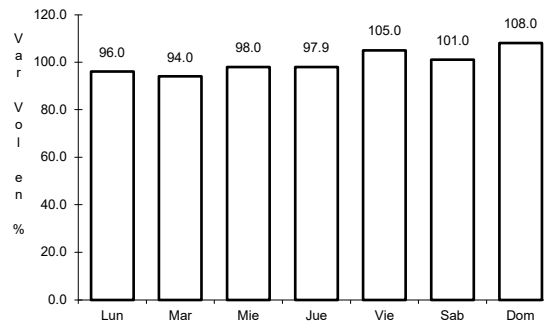
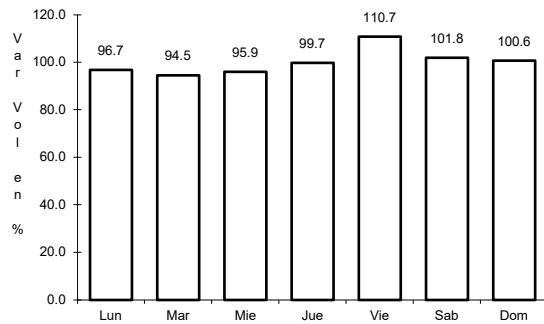
Km: 15.10 Tipo: 1 Sent: 0

Km: 18.65 Tipo: 1 Sent: 0

42 CARR: Motul - Puerto Telchac

CLAVE: 31006

ruta: YUC-172



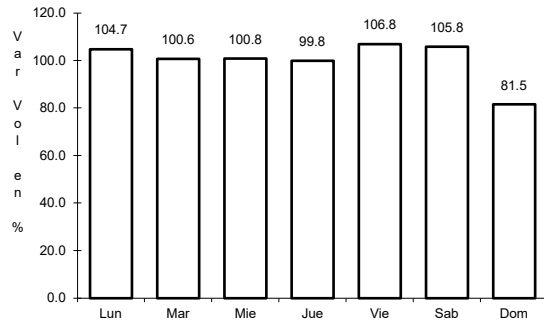
Km: 0.00 Tipo: 3 Sent: 0

Km: 12.00 Tipo: 3 Sent: 0

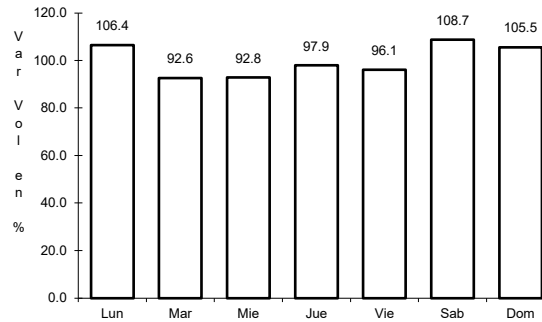
43 CARR: Muna - Maxcanú

CLAVE: 31053

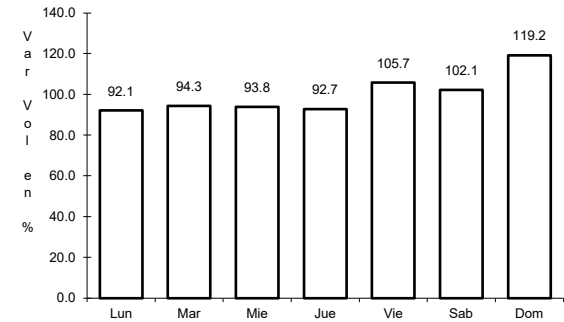
RUTA: YUC



Km: 0.00 Tipo: 3 Sent: 0



Km: 17.00 Tipo: 3 Sent: 0

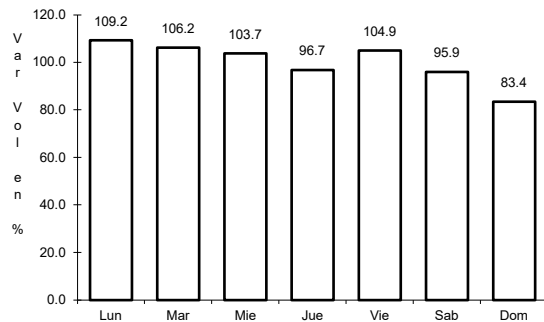


Km: 31.00 Tipo: 1 Sent: 0

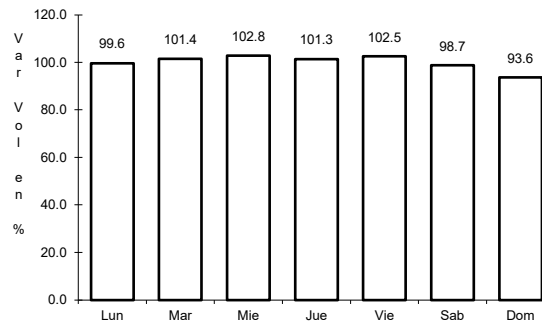
44 CARR: Oxkutzcab - Xul

CLAVE: 31051

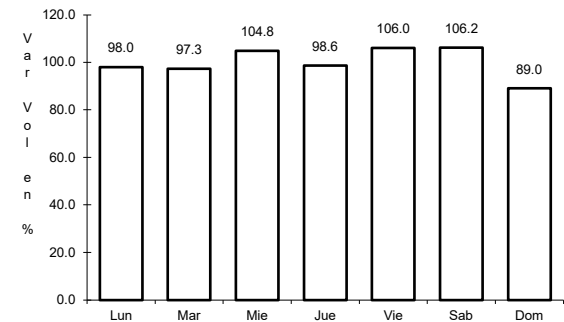
RUTA: YUC-031



Km: 0.00 Tipo: 3 Sent: 0



Km: 10.00 Tipo: 3 Sent: 0

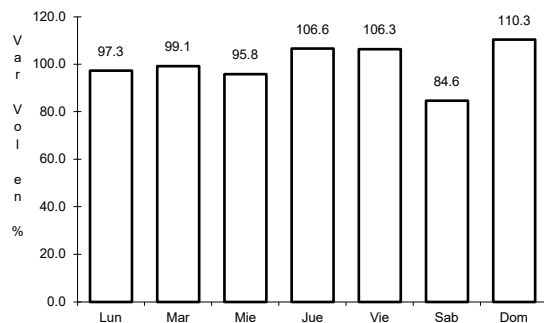


Km: 25.00 Tipo: 1 Sent: 0

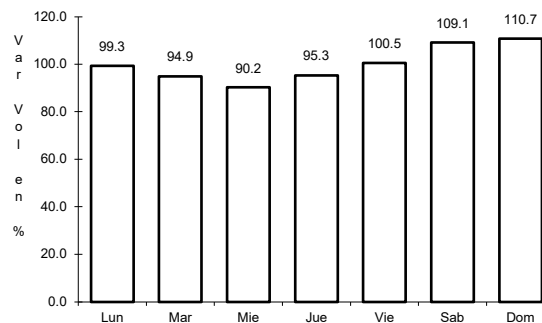
45 CARR: Piste - Dzitás

CLAVE: 31013

RUTA: YUC-013



Km: 0.00 Tipo: 3 Sent: 0

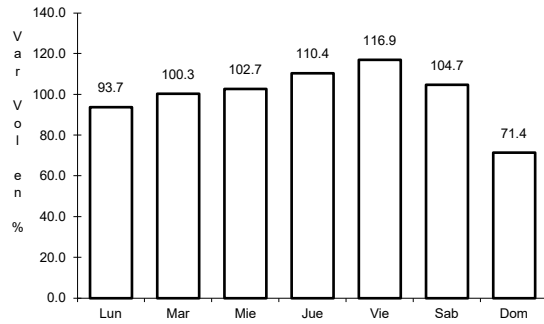


Km: 18.00 Tipo: 1 Sent: 0

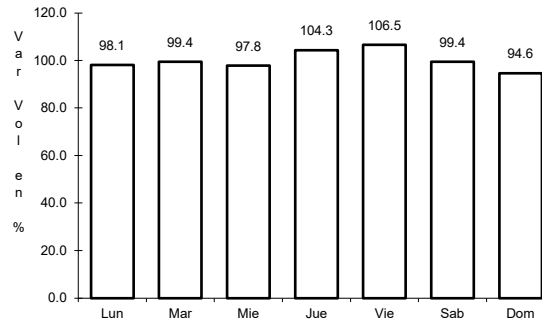
46 CARR: Progreso - Telchac Puerto

CLAVE: 31616

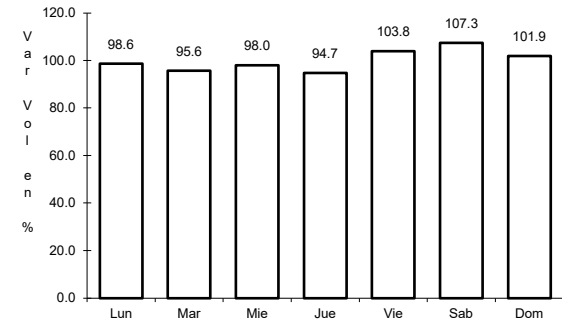
ruta: YUC-027



Km: 0.00 Tipo: 3 Sent: 1



Km: 0.00 Tipo: 3 Sent: 2

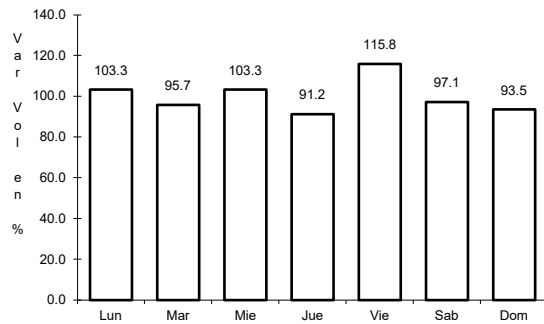


Km: 41.50 Tipo: 1 Sent: 0

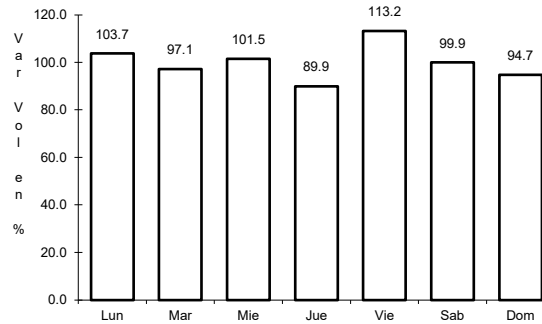
47 CARR: Ramal a Chankom

CLAVE: 31049

ruta: YUC



Km: 0.00 Tipo: 3 Sent: 0

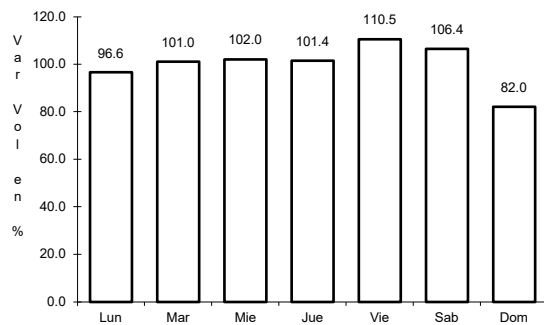


Km: 9.00 Tipo: 1 Sent: 0

48 CARR: Ramal a Dzonot Carretero

CLAVE: 31614

ruta: YUC

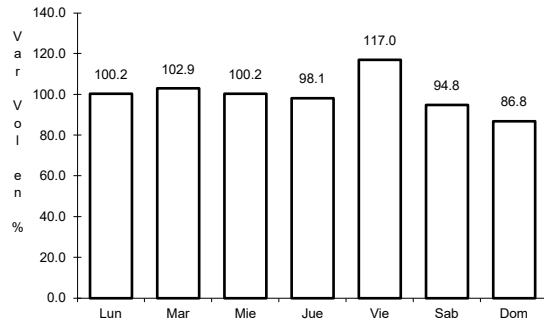


Km: 0.00 Tipo: 3 Sent: 0

49 CARR: Ramal a San Felipe

CLAVE: 31628

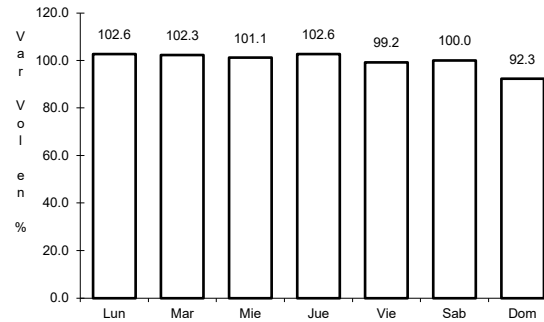
ruta: YUC



Km: 0.00

Tipo: 3

Sent: 0



Km: 7.20

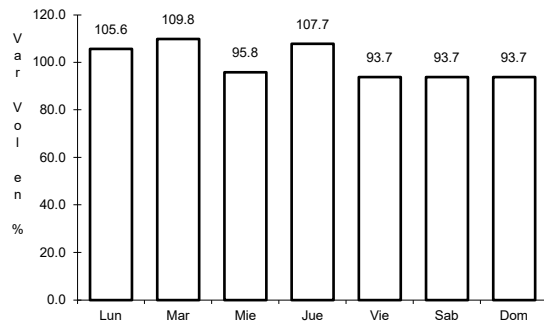
Tipo: 1

Sent: 0

50 CARR: Ramal a Tedzidz

CLAVE: 31600

ruta: YUC



Km: 6.00

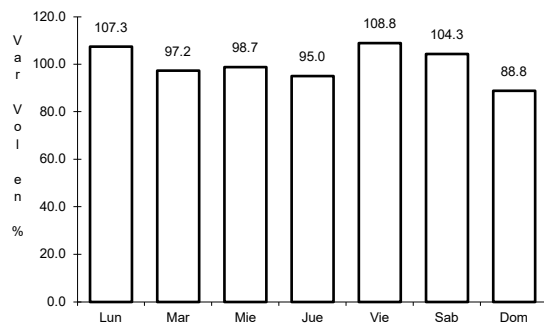
Tipo: 1

Sent: 0

51 CARR: Ramal a Yaxcabá

CLAVE: 31111

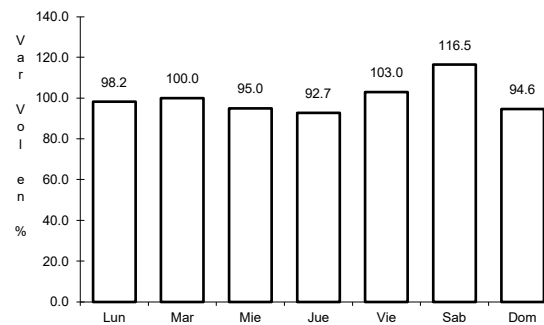
ruta: YUC-289



Km: 0.00

Tipo: 3

Sent: 0



Km: 18.00

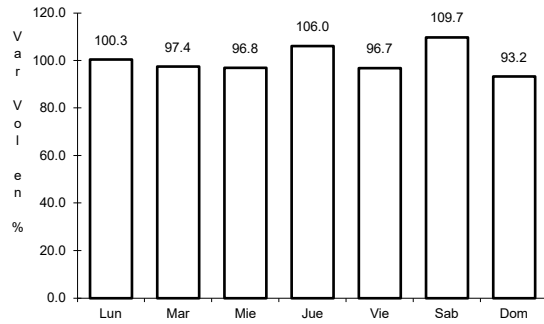
Tipo: 1

Sent: 0

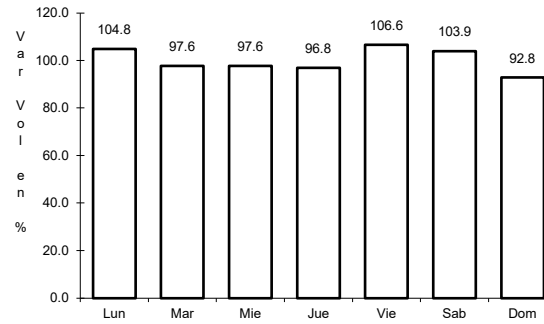
52 CARR: Sinanché - Xitibcanul

CLAVE: 31619

RUTA: YUC



Km: 0.00 Tipo: 3 Sent: 0

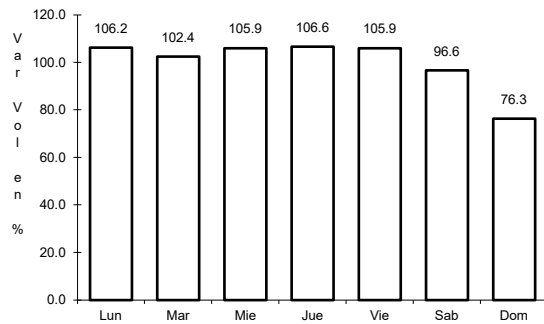


Km: 7.00 Tipo: 1 Sent: 0

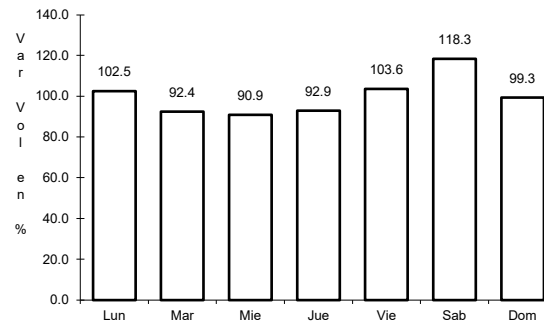
53 CARR: Suma - Izamal

CLAVE: 31081

RUTA: YUC-081



Km: 0.00 Tipo: 3 Sent: 0

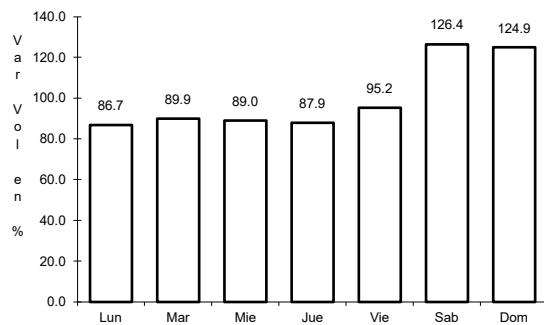


Km: 22.00 Tipo: 1 Sent: 0

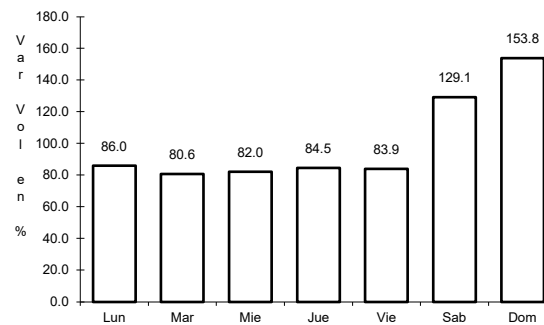
54 CARR: Telchac Puerto - Dzilam de Bravo

CLAVE: 31042

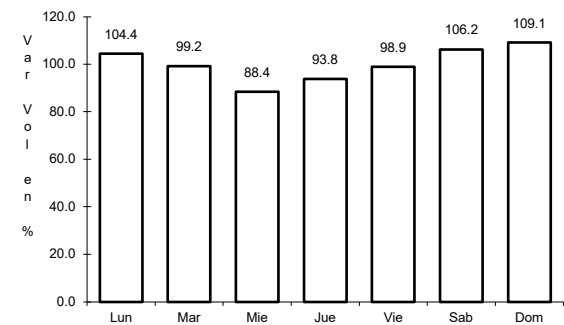
RUTA: YUC



Km: 0.00 Tipo: 3 Sent: 0



Km: 26.00 Tipo: 1 Sent: 0

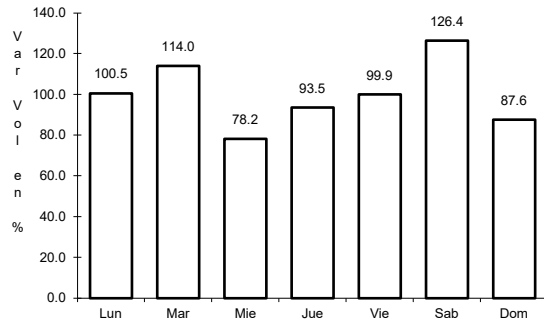


Km: 39.00 Tipo: 1 Sent: 0

55 CARR: Thul - Becanchén

CLAVE: 31104

ruta: YUC-281



Km: 0.00

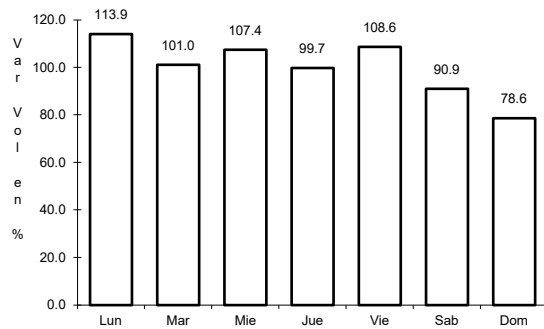
Tipo: 3

Sent: 0

56 CARR: Ticul - Chapab

CLAVE: 31623

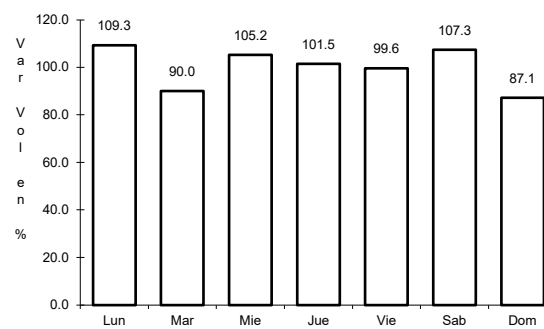
ruta: YUC



Km: 0.00

Tipo: 3

Sent: 0



Km: 8.00

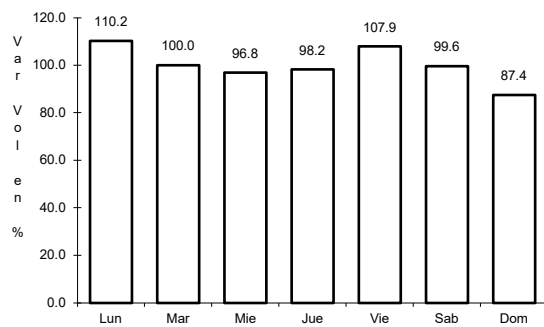
Tipo: 1

Sent: 0

57 CARR: Ticul - Dzan

CLAVE: 31621

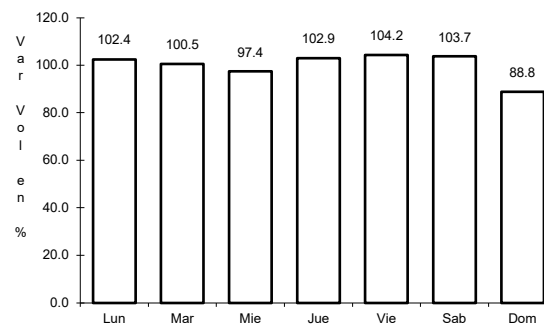
ruta: YUC



Km: 2.50

Tipo: 3

Sent: 0



Km: 7.00

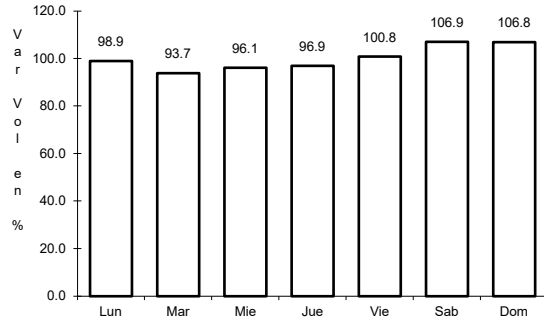
Tipo: 1

Sent: 0

58 CARR: Tixkokob - Baca

CLAVE: 31010

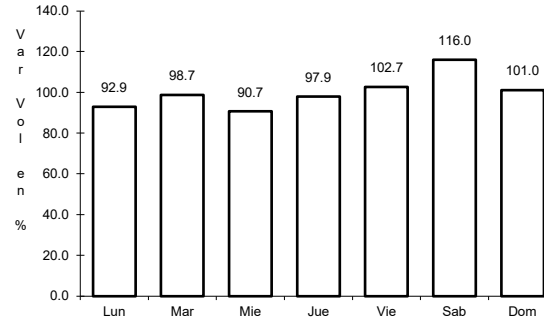
ruta: YUC



Km: 0.00

Tipo: 3

Sent: 0



Km: 15.00

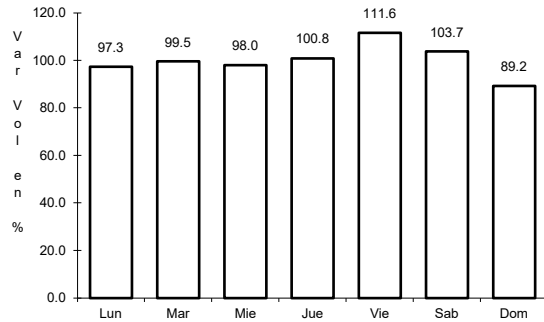
Tipo: 1

Sent: 0

59 CARR: Tixkokob - Sotuta

CLAVE: 31106

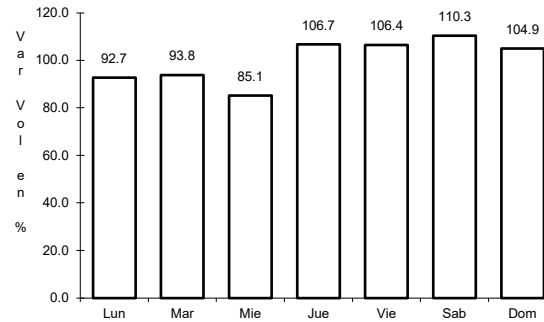
ruta: YUC



Km: 0.00

Tipo: 3

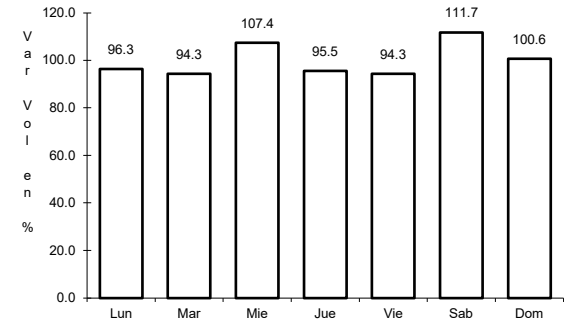
Sent: 0



Km: 31.00

Tipo: 3

Sent: 0



Km: 65.00

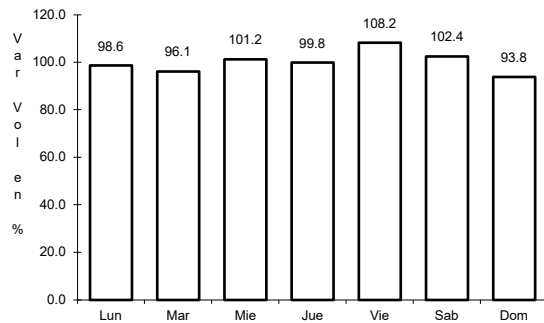
Tipo: 1

Sent: 0

60 CARR: Tizimín - Yucatán

CLAVE: 31588

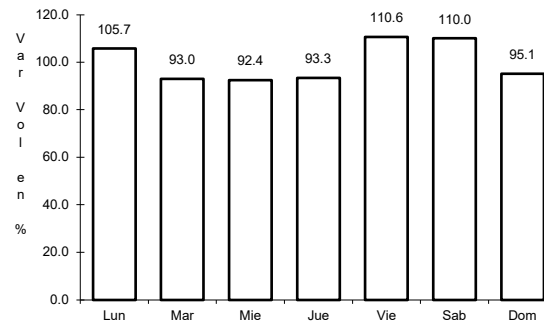
ruta: YUC



Km: 0.00

Tipo: 3

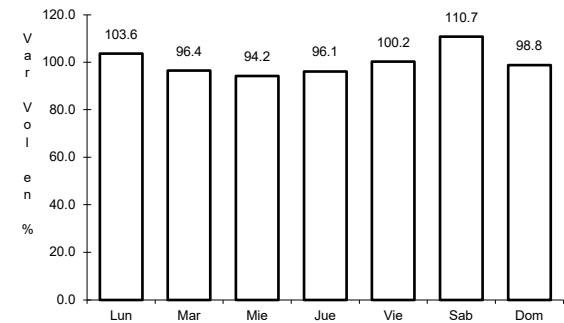
Sent: 0



Km: 30.00

Tipo: 3

Sent: 0



Km: 46.50

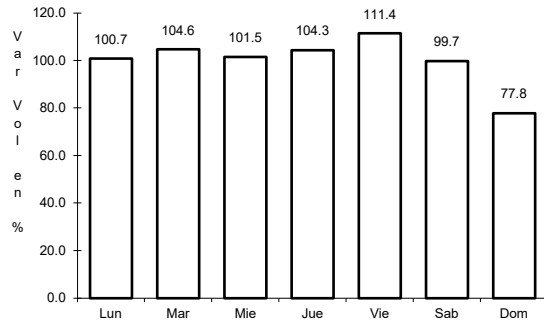
Tipo: 1

Sent: 0

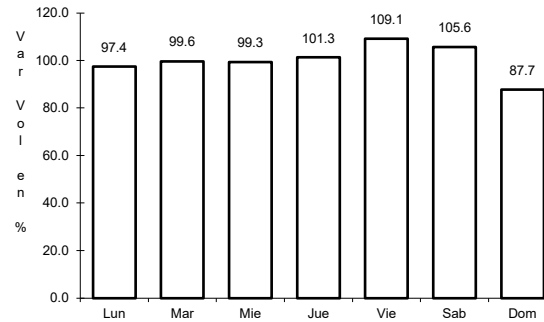
61 CARR: Yaxché - Sierra Papacal

CLAVE: 31620

RUTA: YUC



Km: 0.00 Tipo: 3 Sent: 0

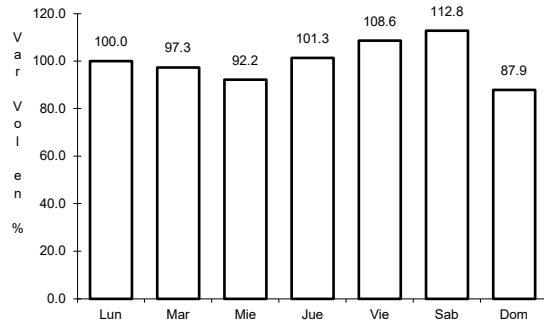


Km: 12.00 Tipo: 1 Sent: 0

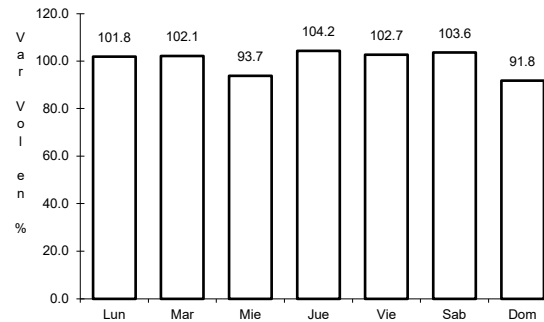
62 CARR: Yobaín - Chabihau

CLAVE: 31610

RUTA: YUC



Km: 0.00 Tipo: 3 Sent: 0

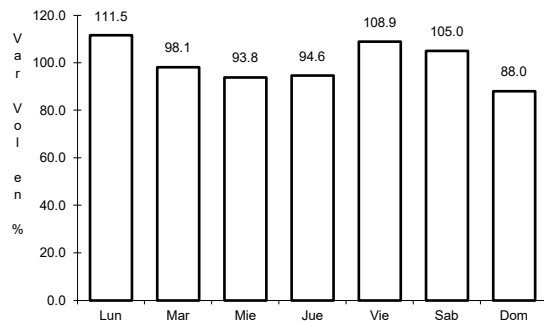


Km: 12.00 Tipo: 1 Sent: 0

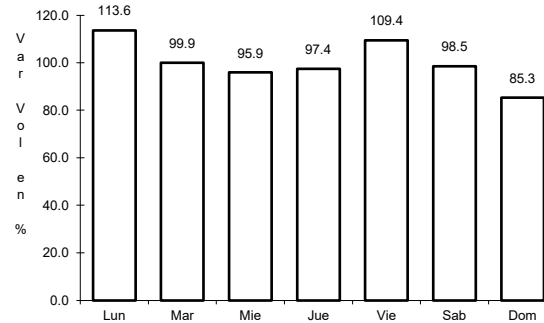
63 CARR: Chemax - Cobá

CLAVE:

RUTA: YUC-MEX-180

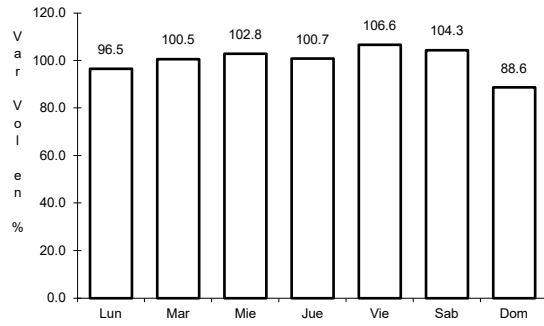


Km: 0.00 Tipo: 3 Sent: 0



Km: 30.90 Tipo: 1 Sent: 0

64 CARR: Progreso - Celestún

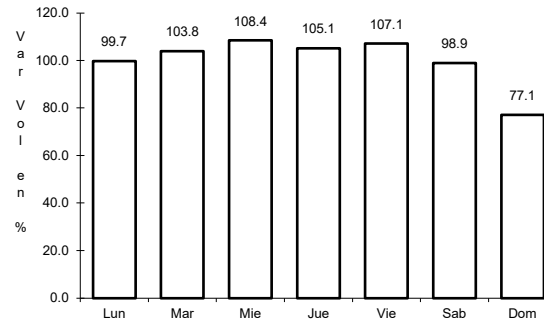


Km: 0.00

Tipo: 3

Sent: 1

CLAVE: 31040

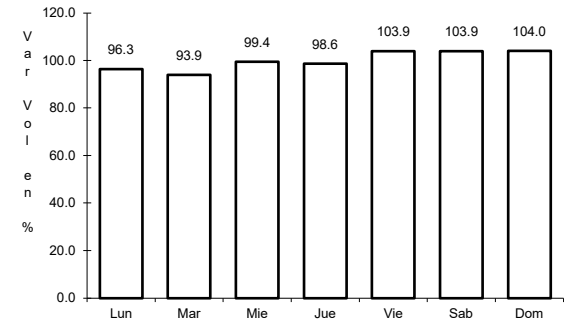


Km: 0.00

Tipo: 3

Sent: 2

RUTA: MEX-YUC



Km: 6.00

Tipo: 3

Sent: 0